

## KEY INVESTOR INFORMATION

This document provides you with key investor information about this Fund. It is not marketing material. The information is required by law to help you understand the nature and risks of investing in this Fund. You are advised to read it so you can make an informed decision about whether to invest.

### iShares STOXX Europe Select Dividend 30 UCITS ETF (DE)

### Exchange Traded Fund (ETF)

WKN: 263529 ISIN: DE0002635299

Management Company: BlackRock Asset Management Deutschland AG

## Objectives and Investment Policy

- ▶ iShares STOXX Europe Select Dividend 30 UCITS ETF (DE) (hereinafter the “Fund”) is an exchange traded fund (ETF) that aims to track the performance of the STOXX® Europe Select Dividend 30 (Price Index) as closely as possible. In this regard, it aims to replicate the benchmark.
- ▶ The index measures the performance of 30 leading stocks by dividend yield from the STOXX® Europe 600 Index that meet specific criteria. The index includes companies which, at the time of inclusion, have paid dividends in four out of five calendar years, have a non-negative dividend growth rate over the past five years, have a dividend to earnings-per-share ratio of 60% or less, and meet criteria for trading volume. The index is weighted according to net dividend yield with individual companies capped at 15%. The index is rebalanced annually and selections of components are subject to index rules that favour components within the index prior to its rebalance. In addition, the index is subject to quarterly and ongoing reviews that allow for the removal of a company, at the index provider's discretion, if it no longer complies with the original selection criteria.
- ▶ The Fund mostly invests in equities in order to achieve the investment objective.
- ▶ The proportion of assets in the Fund which matches the weighting of the underlying index (duplication percentage) is at least 95% of the Fund's assets.
- ▶ The Fund may also engage in short-term secured lending of its investments to certain eligible third parties to generate additional income to off-set the costs of the Fund.
- ▶ It is not the Investment Manager's intention to leverage the Fund. However, the Fund may generate minimal amounts of leverage from time to time, for example, if using financial derivative instruments (FDIs) for efficient portfolio management purposes.
- ▶ Recommendation: This Fund may not be appropriate for investors who plan to withdraw their money within 5 years. Investment in the Fund is suitable for investors who have already gained experience with financial markets.
- ▶ The units in the Fund are distributing units. Income from the Fund's investments will be paid out at least once a year as a dividend.
- ▶ The Fund units are denominated in Euro.
- ▶ The units are listed on one or more Stock Exchange(s). Investors can buy or sell their units daily during business hours through an intermediary on such Stock Exchange(s).

## Risk and Reward Profile



- ▶ This indicator is based on historical data and may not be a reliable indication of the future risk profile of the Fund.
- ▶ The risk category shown is not guaranteed and may change over time.
- ▶ The lowest category does not mean risk free.
- ▶ The Fund is rated six due to the nature of its investments which include the risks listed below. These factors may impact the value of the Fund's investments or expose the Fund to losses.
  - Investment risk is concentrated in specific sectors, countries, currencies or companies. This means the Fund is more sensitive to any localised economic, market, political or regulatory events.

- The value of equities and equity-related securities can be affected by daily stock market movements. Other influential factors include political, economic news, company earnings and significant corporate events.
- ▶ Particular risks not adequately captured by the risk indicator include:
  - Counterparty Risk: The insolvency of any institutions providing services such as safekeeping of assets or acting as counterparty to derivatives or other instruments, may expose the Fund to financial loss.

For more information on risks, please see the Fund's prospectus in paragraph 'Risk Warnings', which is available at [www.ishares.com](http://www.ishares.com) (select your country and navigate to Documents/Legal information).

## Charges

The charges are used to pay the costs of running the Fund, including the costs of marketing and distributing it. These charges reduce the potential growth of your investment.

\* Investors dealing on exchanges will pay fees charged by their stock brokers. Such charges are publicly available on the exchanges on which the units are listed and traded, or can be obtained from stock brokers. If investors deal in units directly with the Fund or the Management Company of the Fund, the entry charge is up to 2% and the exit charge is up to 1%.

\* Authorised participants dealing directly with the Fund or the Management Company (as the case may be) will pay related transaction costs.

The ongoing charges figure is based on expenses for the twelve month period ending 31 December 2013. This figure may vary from year to year. It excludes portfolio trade-related costs, except costs paid to the custodian and any entry/exit charge paid to an underlying collective investment scheme (if any).

\*\* To the extent the Management Company undertakes securities lending to reduce costs, the Fund will receive 100% of the associated revenue generated from which up to 40% will be paid to the Management Company in the form of an overall fixed fee in respect of costs arising in connection with the preparation and execution of such security-lending

transactions. As securities lending revenue sharing does not increase the costs of running the Fund, this has been excluded from the ongoing charges.

For more information on charges, please see the Fund's prospectus in paragraph 'Charges' of the Special Conditions of the Fund, which is available at [www.ishares.com](http://www.ishares.com) (select your country and navigate to Documents/Legal Information).

One-off charges taken before or after you invest	
Entry Charge (entry charge 0% when traded on exchange)	2.00%*
Exit Charge (exit charge 0% when traded on exchange)	1.00%*

This is the maximum that might be taken out of your money before it is invested or before proceeds of your investments are paid out.

Charges taken from the Fund over each year	
Ongoing Charges	0.31%**
Charges taken from the Fund under certain conditions	
Performance Fee	None

## Past Performance

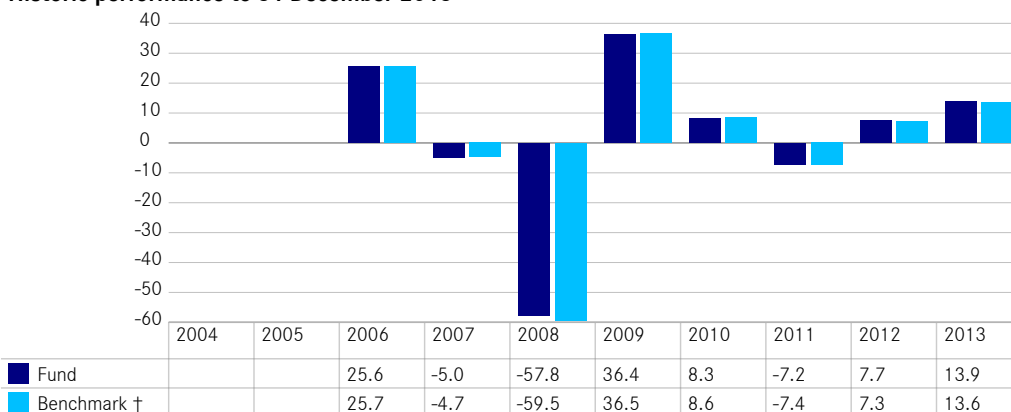
Past performance is not a guide to future performance.

The chart shows the Fund's annual performance in EUR for each full calendar year over the period displayed in the chart. It is expressed as a percentage change of the Fund's net asset value at each year-end. The Fund was launched in 2005.

Performance is shown after deduction of ongoing charges. Any entry/exit charges are excluded from the calculation.

† Benchmark: STOXX® Europe Select Dividend 30 (EUR)

Historic performance to 31 December 2013



## Practical Information

- ▶ The Fund's depositary bank is State Street Bank GmbH.
- ▶ Further information about the Fund can be obtained from the prospectus and latest annual and half-yearly reports. These documents are available free of charge in German, English and certain other languages. They can be found along with other information, such as unit prices, by emailing [info@iShares.de](mailto:info@iShares.de) or from [www.ishares.com](http://www.ishares.com) (select your country and navigate to Documents) or by calling +49 (0) 89 42729 5858.
- ▶ The Fund is subject to the German Investment Tax Act (Investmentsteuergesetz). This may have an impact on the personal tax of your investment in the Fund.
- ▶ BlackRock Asset Management Deutschland AG may be held liable solely on the basis of any statement contained in this document that is misleading, inaccurate or inconsistent with the relevant parts of the Fund's prospectus.
- ▶ The indicative intra-day net asset value of the Fund is available at <http://deutsche-boerse.com>.
- ▶ The Company will publish a breakdown of the key underlying Investments of the Fund for each Dealing Day via the official iShares website ([www.ishares.com](http://www.ishares.com)) subject to any restrictions on the publication of data imposed by the relevant index providers.