

## Key investor information

This document provides you with key investor information about this fund. It is not marketing material. The information is required by law to help you understand the nature and the risks of investing in this fund. You are advised to read it so you can make an informed decision about whether to invest.

### XACT Norden 30/Nordic 30

ISIN: SE0001710914

Management Company: Handelsbanken Fonder AB

### Objectives and Investment Policy

The fund is an exchange-traded index fund and its objective is to follow the performance of the NASDAQ VINX30 Index™ as closely as possible. The index consists of 30 of the largest and most-traded shares on the nordic Stock markets in Stockholm, Helsinki, Oslo and Copenhagen.

The fund invests in equities included in this index. The fund may invest in derivatives, such as futures, as a complement to protect the fund's value or to save costs.

The fund does not distribute dividends. All income is reinvested in the fund.

Normally, you can purchase and sell fund units on the stock market, the so-called secondary market, on all banking days. You can also create and redeem units directly with the management company on the so-called primary market.

### Risk and Reward profile



The risk/return indicator shows the relationship between risk and potential returns when investing in the fund. The indicator is based on the change in the fund's value over the past five years.

This fund belongs to category 7, which means there is a significantly high risk for up- and downturns in the net asset value. Category 1 does not mean that the fund is risk-free. The fund's risk indicator can change both upwards and downwards over time, as the indicator is based on historical data that does not guarantee future risk/returns.

The fund invests in companies listed in the equity markets that in general are characterized by high risk as well as the potential for high returns. The indicator mainly reflects the up- and downturns in the value of the fund's equity investments and in exchange rates.

Given that fund investments are concentrated in one region, the fund has a higher risk than a fund that distributes holdings across several regions.

Further information about risk can be found in the information brochure which is available at [www.xact.se](http://www.xact.se) and [www.handelsbanken.se/funds](http://www.handelsbanken.se/funds).

## Charges for this fund

### One-off charges that may be taken before or after you invest.

Entry charge	0.00%
Exit charge	0.00%

This is the maximum that might be taken out of your money before it is invested/before the proceeds of your investment are paid out.

### Charges taken from the fund over a year.

Ongoing charges	0.40%
-----------------	-------

### Charges taken from the fund under certain specific conditions.

Performance fee	None
-----------------	------

You will pay a brokerage commission for any trades made on the stock exchange. Transactions are completed using the current bid and ask prices. Information about applicable brokerage commissions for trades made on the stock exchange are available from your broker.

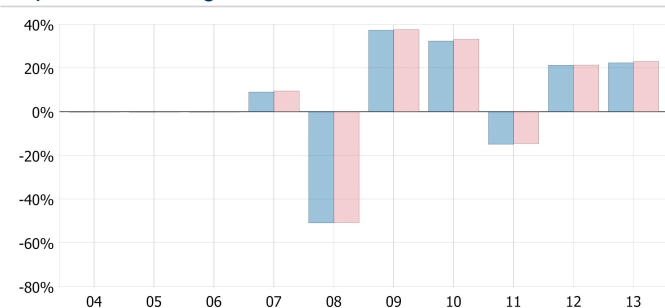
A maximum fee of 0,04% of the fund's net asset value, with a minimum fee of EUR 3,200, is charged for the creation and redemption of fund units made directly with the Management Company in the so-called primary market. A maximum fee of 2%, with a minimum fee of EUR 10, is charged for the redemption of fund units on the primary market that total less than 50,000 units.

The ongoing charges represent payment for fund operations, including marketing and distribution. The ongoing charges figure excludes transactions costs such as brokerage fees on securities transactions. Fees decrease the fund's potential returns. Ongoing charges is based on the fees from previous calendar year. The ongoing charges can vary slightly from year to year.

Further information about fees can be found in § 11 in the fund rules which are available at [www.handelsbanken.se/funds](http://www.handelsbanken.se/funds).

## Past performance

### In percent including distribution



The graph shows the fund's and the index's results (returns) in EUR. The returns are calculated after the deduction for annual fees. No consideration is taken for tax or inflation.

Past performance is no guarantee of future returns.

The fund was launched in 2006.

	2007	2008	2009	2010	2011	2012	2013
<b>Fund</b>	9.05%	-50.78%	37.36%	32.38%	-14.79%	21.32%	22.45%
<b>Index</b>	9.58%	-50.72%	37.67%	33.27%	-14.56%	21.42%	23.08%

## Practical information

More information about XACT Norden 30/Nordic 30 is available in the prospectus, annual report and semi-annual report. These are provided without cost on our website.

### Web:

<http://en.xact.se>

### Custodian:

Skandinaviska Enskilda Banken AB (publ)

### Share price:

The fund's net asset value: The NAV is calculated daily and is published on our home page and in daily newspapers.

Tax: note that the tax regulation applicable in the fund's home member state may affect the personal tax situation of the investor.

Handelsbanken Fonder AB may be held liable solely on the basis of any statement contained in this document that is misleading, inaccurate or inconsistent with the relevant parts of the information brochure for the fund.

**AUTHORIZATION:** Handelsbanken Fonder AB and this fund is authorised in Sweden and regulated by Swedish Financial Supervisory Authority.

**PUBLISHING:** This key investor information is accurate as at 22.02.2013.