



We invest responsibly in infrastructure, delivering long-term sustainable returns to shareholders and having a positive influence on our portfolio companies and their stakeholders.

Our objectives are to provide shareholders with a total return of 8% to 10% per annum, to be achieved over the medium term, with a progressive annual dividend per share.

A differentiated investment proposition

Our primary investment focus is mid-market core-plus with controlling majority or significant minority positions and strong governance rights, whilst adhering to a set of core investment characteristics and risk factors.

Total Shareholder Return

Name	1 Year	3 Year	5 Year	Since IPO p.a
3i Infrastructure plc	-6.9%	39.3%	72.2%	11.7%
FTSE 250 Index	-7.9%	34.4%	10.3%	6.1%
FTSE All-Share	2.8%	47.7%	27.6%	5.4%

As at 31 March 2023

Managing Partners and Co-Heads of European Infrastructure



Scott Moseley



Bernardo Sottomayer

Strategic priorities

- Maintaining a balanced portfolio
- Disciplined approach to new investment
- Managing the portfolio intensively
- Maintaining an efficient balance sheet
- Sustainability a key driver of performance

Key facts

£3.6bn

portfolio value including commitments

13

assets

11.90p

target dividend per share for FY24

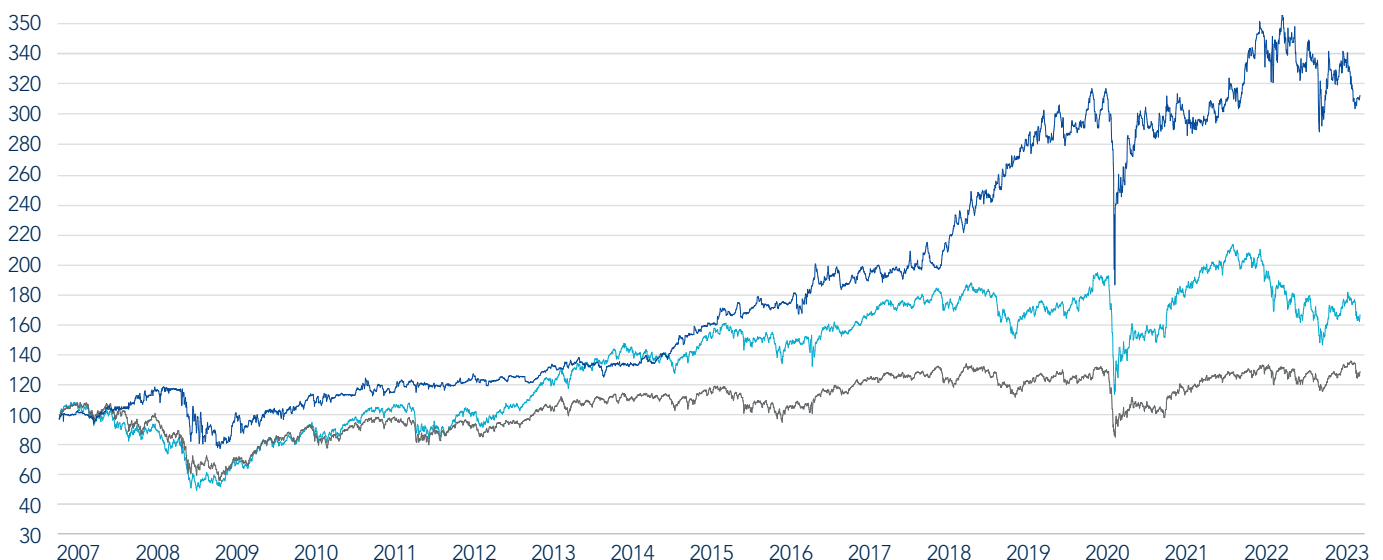
11.7%

total shareholder return, annualised since IPO

14.7%

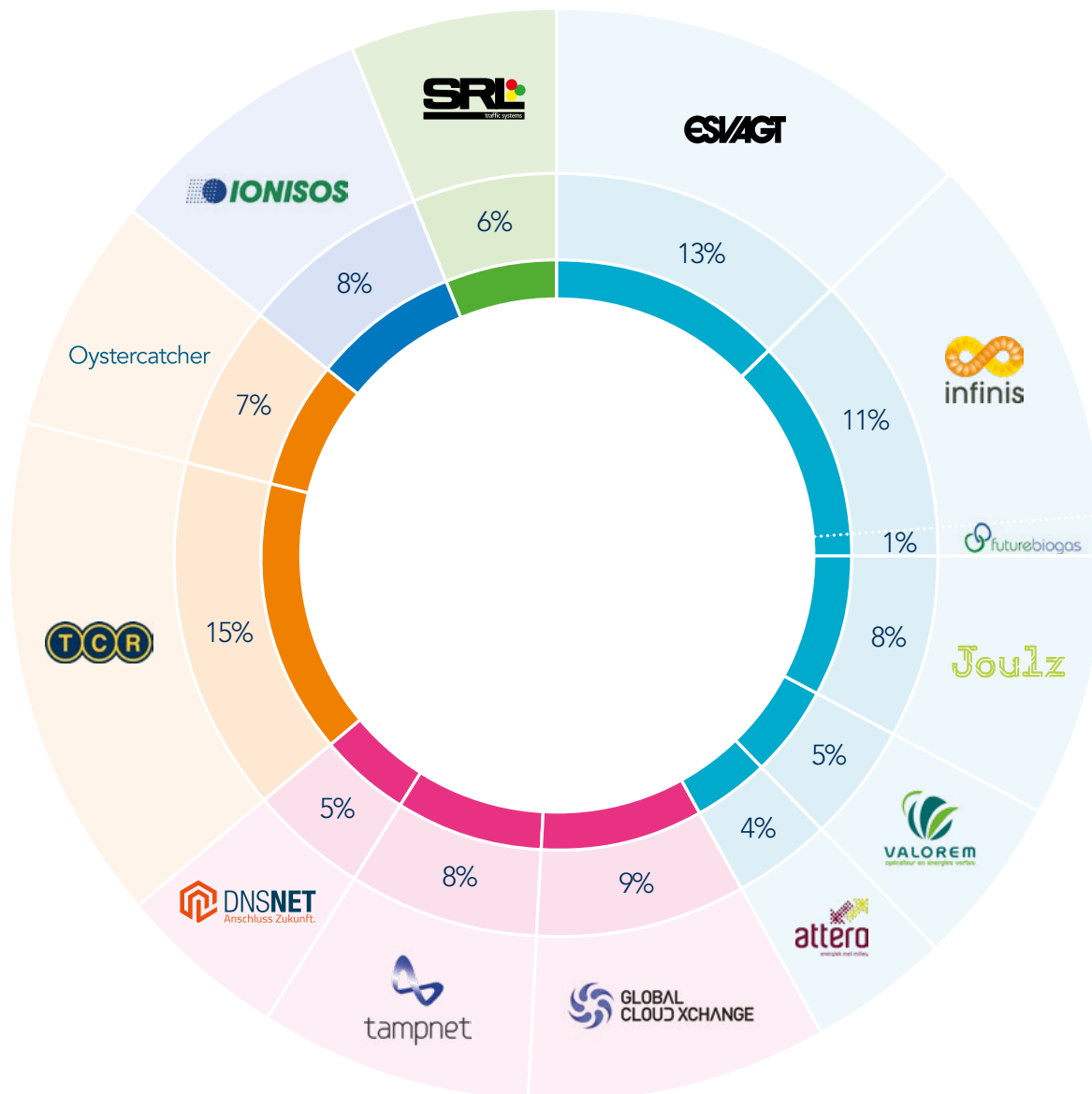
total return on opening NAV in the year to 31 March 2023

3iN share price performance since IPO



As at 31 March 2023 — 3iN — FTSE 250 — FTSE All-Share

A high-quality, diverse and differentiated portfolio.



Megatrends

Energy transition	42%	Demographic change	8%
Digitalisation	22%	Renewing social infrastructure	6%
Globalisation	22%		

3i Infrastructure plc

Registered office
11–15 Seaton Place
St Helier
Jersey
JE4 0QH
T +44 (0)1534 847 410

Thomas Fodor

Investor Relations Partner
T +44 (0)20 7975 3469

3i Infrastructure plc is a closed-ended investment company incorporated in Jersey and tax resident in the United Kingdom, listed on the London Stock Exchange (FTSE 250) and regulated by the Jersey Financial Services Commission. 3i Investments plc, a wholly-owned subsidiary of 3i Group plc, is authorised and regulated in the UK by the Financial Conduct Authority and acts as 3i Infrastructure plc's investment manager.

Details on fees can be found in the annual report.

For further information
www.3i-infrastructure.com

Annual report
www.3i-infrastructure.com/investors/reports/2023/