

PRODUCT KEY FACTS

Aberdeen Standard SICAV I - Indian Equity Fund



December 2019

- This statement provides you with key information about the Aberdeen Standard SICAV I – Indian Equity Fund.
- This statement forms part of the offering document and should be read in conjunction with the offering document of Aberdeen Standard SICAV I.
- You should not invest in this product based on this statement alone.

Quick facts

Management Company:	Aberdeen Standard Investments Luxembourg S.A.
Investment Manager:	Aberdeen Asset Managers Limited – the United Kingdom (internal delegation)
Sub-Investment Manager:	Aberdeen Standard Investments (Asia) Limited – Singapore (internal delegation)
Depository:	BNP Paribas Securities Services, Luxembourg Branch
Ongoing Charges over a Year*:	Class A Acc USD: 2.06% Class A Acc GBP: 2.06%
Dealing Frequency:	Daily
Base Currency:	USD
Dividend Policy:	Class A Acc USD and Class A Acc GBP No dividend payment
Financial Year End:	30 September
Minimum Investment:	Class A Acc USD and Class A Acc GBP: US\$1,000 initial, US\$1,000 additional

* The ongoing charges figure is an annualised figure based on the expenses for the period from 1 October 2018 to 31 March 2019. This figure may vary from year to year.

What is the product?

This is a fund constituted in the form of a mutual fund. It is domiciled in Luxembourg and its home regulator is Commission de Surveillance du Secteur Financier ("CSSF").

Investment Objectives

To achieve long-term total return by investing at least two-thirds of the Fund's assets in equities and equity-related securities of:

- 1) companies with their registered office in India; and/or
- 2) companies which have the preponderance of their business activities in India; and/or
- 3) holding companies that have the preponderance of their assets in companies with their registered office in India.

Strategy

The Fund may use derivatives for the purpose for hedging but will not use financial derivative instruments for investment purposes.

Use of derivatives/investment in derivatives

The Fund's net derivative exposure may be up to 50% of the Fund's net asset value.

What are the key risks?

Investment involves risks. Please refer to the offering document of Aberdeen Standard SICAV I for details including the risk factors.

1. Equity risk

- The value of the Fund that invests in equity and equity-related securities will be affected by economic, political, market, and issuer specific changes. Such changes may adversely affect securities, regardless of company specific performance.

2. Concentration risk

- The Fund invests in a single country market (i.e. India) and is likely to be more volatile than a more widely invested fund.
- Lack of liquidity may adversely affect the value or ease of disposal of assets.

3. Risk of using financial derivative instruments

- Risks associated with financial derivative instruments include counterparty/credit risk, liquidity risk, valuation risk, volatility risk and over-the-counter transaction risk. The leverage element/component of a financial derivative instrument can result in a loss significantly greater than the amount invested in the financial derivative instrument by the Fund. Exposure to financial derivative instrument may lead to a high risk of significant loss by the Fund.

4. Emerging markets risk

- The Fund invests in Indian equity and equity-related securities thereby providing exposure to emerging markets which tend to be more volatile than mature markets and its value could move sharply up or down. In some circumstances, the underlying investments may become less liquid which may constrain the Investment Manager's ability to realise some or all of the portfolio. The registration and settlement arrangements in emerging markets may be less developed than in more mature markets so the operational risks of investing are higher. Political risks and adverse economic circumstances are more likely to arise, putting the value of your investment at risk.

5. Exchange rates risk

- The Fund may invest in securities denominated in a number of different currencies other than the base currency in which the Fund is denominated. Changes in foreign currency exchange rates may adversely affect the value of the Fund's investments and the income thereon.

6. Risk of Foreign Account Tax Compliance Act ("FATCA")

- The Fund will attempt to satisfy any obligations imposed on it to avoid the imposition of FATCA withholding tax. However, no assurance can be given that the Fund will be able to satisfy these obligations. If the Fund becomes subject to a withholding tax as a result of the FATCA regime, the value of the shares held by the shareholders may suffer material losses.

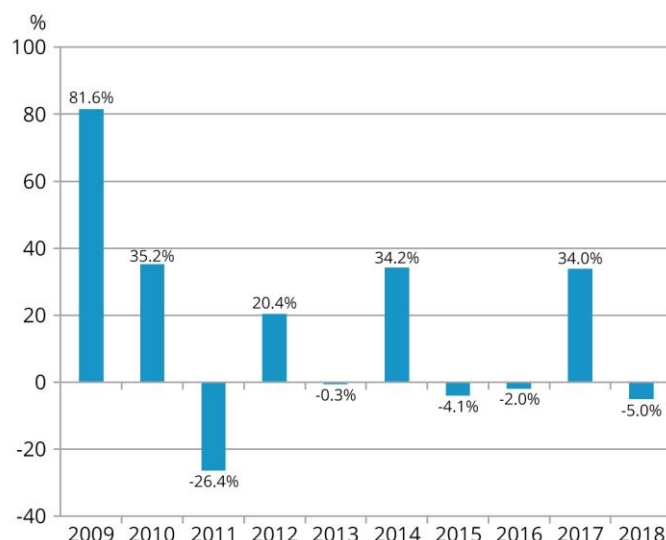
7. Taxation relating to Indian Equities

- The Indian General Anti-Avoidance Rules (GAAR) is a new piece of legislation and therefore there is little guidance in terms of best practice over its application. However, it is clear that Indian GAAR is drafted very widely and the interpretation of it will be subjective and open to conflicting interpretation.
- Aberdeen Global Indian Equity Limited (the "Subsidiary"), the wholly owned subsidiary of the Fund, will make investments into Indian securities in accordance with the investment objective, policies and restrictions of the Fund. The Subsidiary is expected to operate in a manner that should not cause it to be treated as having a permanent establishment in India. However, there can be no assurance that this position will be respected by the Indian tax authorities.
- It is the intent of the Fund that the Subsidiary will be tax resident in Singapore and will satisfy certain provisions of the Protocol/Article to the India-Singapore tax treaty, details of which are described in the offering document. There can be no assurance that any future changes to the India-Singapore tax treaty or future interpretations of the India-Singapore tax treaty will not adversely affect the tax position of the Subsidiary's investments in India.
- Should the treaty not be applied, interest and capital gains earned by the Subsidiary would be subject to tax as per the domestic tax laws of India applicable to Foreign Portfolio Investors. Accordingly, where the treaty is not applied the income of the Subsidiary would be subject to tax in India at a rate ranging from 0% to 30%, depending on the nature of income and the period for which the securities have been held.

8. General risk

- The value of shares and the income from them can go down as well as up and you may not get back the amount invested.

How has the fund performed?



- Past performance information is not indicative of future performance. Investors may not get back the full amount invested.
- The computation basis of the performance is based on the calendar year-end, NAV-to-NAV, with dividend reinvested.
- These figures show by how much the Class A Acc USD increased or decreased in value during the calendar year being shown. Performance data has been calculated in USD including ongoing charges and excluding subscription fee and redemption fee you might have to pay (if any).
- The Investment Manager views Class A Acc USD being the most appropriate representative share class as this share class is opened for investment by Hong Kong retail investors and broadly indicative of the Fund's performance characteristics.
- Fund launch date: 03/2006
- Class A Acc USD launch date: 03/2006

Is there any guarantee?

This Fund does not have any guarantees. You may not get back the full amount of money you invest.

What are the fees and charges?

Investors should refer to the offering document of Aberdeen Standard SICAV I for details regarding the fees and expenses of the Fund.

Charges which may be payable by you

You may have to pay the following fees when dealing in the shares of the Fund.

Fees and charges

Subscription fee[^]:

Switching fee:

Redemption fee:

What you pay

Up to 5.0% of the amount you pay

Up to 1% of the net asset value of the shares being switched

Not applicable

[^] Initial sales charge and capacity management charge if applicable.

Ongoing fees payable by the Fund

The following expenses will be paid out of the Fund. They affect you because they reduce the return you get on your investments.

Investment Management Fee:

Performance Fee:

Operating, Administrative and Servicing Expenses:

Annual rate (as a % of the Fund's net asset value)

Class A Acc USD and Class A Acc GBP: 1.75%*

Not applicable

Fixed at a maximum level of 0.60%

*You should note that the fee may be increased, up to a specified permitted maximum, by giving shareholders at least one month's prior notice. For details, please refer to the offering document of Aberdeen Standard SICAV I.

Other fees

You may have to pay other fees and charges when dealing in the shares of the Fund. For details, please refer to the offering document of Aberdeen Standard SICAV I.

Additional Information

- You generally buy and redeem shares at the Fund's next-determined net asset value after the Hong Kong Representative receives your request in good order before 5:00pm (Hong Kong time) on the Hong Kong business day (being a day, other than Saturday, on which banks in Hong Kong are open for business). Before placing your subscription or redemption orders, please check with your distributor for the distributor's internal cut-off time (which may be earlier than the Fund's dealing cut-off time).
- The net asset value of the Fund is calculated and the price of shares is published daily at www.aberdeenstandard.com.hk. This website has not been reviewed by the SFC and may contain information of funds not authorised by the SFC.
- Investors may obtain the past performance information of other share classes offered to Hong Kong investors (if any) from www.aberdeenstandard.com.hk.
- Investors may obtain information on the distributor(s) by referring to Client Services Team of Aberdeen Standard Investments (Hong Kong) Limited.

Important Notes

If you are in doubt, you should seek professional advice.

The SFC takes no responsibility for the contents of this statement and makes no representation as to its accuracy or completeness.

產品資料概要

安本標準 – 印度股票基金

2019 年 12 月

- 本概要提供安本標準 – 印度股票基金的重要資料。
- 本概要是銷售文件的一部分，並應與安本標準基金的銷售文件一併閱讀。
- 請勿單憑本概要而決定投資於本產品。

資料便覽

管理公司：	Aberdeen Standard Investments Luxembourg S.A.
投資經理：	Aberdeen Asset Managers Limited – 英國 (內部委託)
副投資經理：	Aberdeen Standard Investments (Asia) Limited – 新加坡 (內部委託)
存管人：	BNP Paribas Securities Services, Luxembourg Branch
全年經常性開支比率*：	A 類累積(美元)：2.06% A 類累積(英鎊)：2.06%
交易頻密程度：	每日
基本貨幣：	美元
派息政策：	A 類累積(美元)及 A 類累積(英鎊) 不派息
財政年度終結日：	9 月 30 日
最低投資額：	A 類累積(美元)及 A 類累積(英鎊)：首次 1,000 美元，其後每次 1,000 美元

* 經常性開支比率是根據 2018 年 10 月 1 日至 2019 年 3 月 31 日期間的費用計算出的年率化數字。這數字每年均可能有所變動。

本基金是甚麼產品？

本基金以互惠基金形式組成，在盧森堡註冊，其所在地監管機構是金融業監管委員會 (Commission de Surveillance du Secteur Financier) (「CSSF」)。

投資目標

通過將本基金至少三分之二的資產投資於：

- 1) 在印度設有註冊辦事處的公司；及/或
- 2) 在印度進行大部份業務活動的公司；及/或
- 3) 其大部份資產來自在印度設有註冊辦事處的公司的控股公司

所發行的股票及股票相關證券，以獲得長期總回報。

策略

本基金可為對沖目的而使用衍生工具，但不會為投資目的而使用金融衍生工具。

使用衍生工具 / 衍生工具投資

本基金的衍生工具風險承擔淨額最多可達本基金資產淨值的 50%。

本基金有哪些主要風險？

投資涉及風險。請參閱安本標準基金銷售文件，了解風險因素等詳情。

1. 股票風險

- 本基金投資於股票及股票相關證券，基金價值將會受到經濟、政治、市場及發行人本身的轉變所影響。不論公司本身業績表現如何，有關轉變可能對證券構成不利影響。

2. 集中風險

- 本基金投資於單一國家市場(即印度)，故相比投資較廣泛的基金，可能較為波動。
- 缺乏流通性可能對資產的價值或出售難易程度方面構成不利影響。

3. 使用金融衍生工具的風險

- 與金融衍生工具有關的風險包括對手方/信貸風險、流動性風險、估值風險、波動性風險及場外交易風險。金融衍生工具的槓桿元素/組成部分可導致產生遠高於本基金投資於金融衍生工具的金額的損失。投資金融衍生工具可導致本基金產生重大損失的高風險。

4. 新興市場風險

- 本基金投資於印度的股票及股票相關證券，從而涉足於新興市場，與成熟市場相比，該等新興市場往往較為波動，相關投資的價值可能會大幅上升或下跌。在某些情況下，相關投資的流動性或會下降，因而限制投資經理變現部份或全部投資組合的能力。新興市場的登記及結算安排可能不及成熟市場般發展完善，故存在更高的投資營運風險。較易出現政治風險及不利經濟狀況，致令閣下的投資價值承受風險。

5. 匯率風險

- 本基金可投資於以本基金計值的基本貨幣以外的不同貨幣為單位的證券。匯率改變可能對本基金的投資價值及投資收益造成不利影響。

6. 海外帳戶稅收合規法案（「FATCA」）的風險

- 本基金將嘗試履行其被施加的責任，以避免被徵收FATCA預扣稅。然而，概不保證本基金將能夠履行該等責任。如本基金因FATCA制度而須繳納預扣稅，股東所持股份的價值可能會蒙受重大損失。

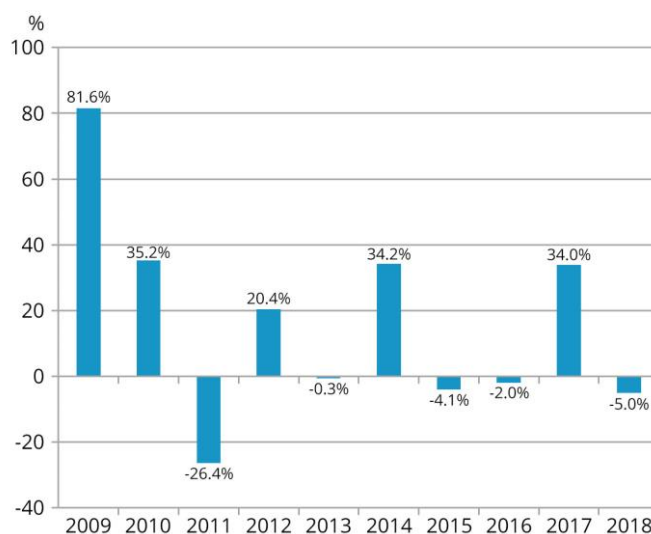
7. 印度股票的課稅

- 《印度一般反避稅規則》(GAAR) 屬一項新法律，因此目前僅有少量有關其應用性的最佳慣例之指引。然而，可確定的是印度GAAR的草擬範圍廣泛，其詮釋將受到及面臨衝突性的解釋。
- 本基金的全資附屬公司Aberdeen Global Indian Equity Limited (「附屬公司」) 將會按照本基金的投資目的、政策及限制對印度證券作出投資。預期附屬公司會以不被視為於印度設有常設機構的方式營運。然而，概不保證印度稅務當局將有相同見解。
- 本基金擬將附屬公司視為新加坡稅務居民，並將符合印度 - 新加坡課稅條約議定書 / 條文的若干條文，有關詳情載於銷售文件。概不保證對印度 - 新加坡課稅條約作出的任何日後變更或對印度 - 新加坡課稅條約作出的日後詮釋將不會對附屬公司於印度的投資的稅務狀況造成不利影響。
- 如條約不適用，根據適用於境外投資組合投資者的印度境內稅務法律，附屬公司所賺取的利息及資本收益將須繳納稅項。因此，如條約不適用，附屬公司的收入將須繳納印度稅項，稅率將由0%至30%不等，視乎收入性質及持有證券的時間長短而定。

8. 一般風險

- 股份價值及從股份所得的收益可升亦可跌，閣下未必可收回所投資的金額。

本基金過往的業績表現如何？



- 往績並非預測日後業績表現的指標。投資者未必能取回全部投資本金。
- 基金業績表現以曆年末的資產淨值作為比較基礎，股息會滾存再作投資。
- 上述數據顯示A類累積(美元)的價值在有關曆年內的升跌幅度。業績表現以美元計算，當中反映出本基金的持續費用，但不包括本基金可能向閣下收取的認購費及贖回費(如有)。
- 投資經理認為A類累積(美元)是最適合的代表股份類別，原因是此股份類別開放予香港零售投資者認購，而且大致上反映本基金的表現特性。
- 基金發行日：03/2006
- A類累積(美元)發行日：03/2006

本基金有否提供保證？

本基金並不提供任何保證。閣下未必能取回全數投資金額。

投資本基金涉及哪些費用及收費？

投資者應參閱安本標準基金的銷售文件，了解本基金的費用及收費詳情。

閣下或須繳付的收費

閣下買賣本基金的股份時或須繳付下列費用。

費用及收費

認購費[^]：

轉換費：

贖回費：

閣下所付金額

最多達閣下所付金額的 5.0%

最多達轉換股份資產淨值的 1%

不適用

[^] 首次認購費及容量管理費（如適用）。

本基金應持續繳付的費用

以下收費將從本基金中支付。閣下的投資回報將會因而減少。

投資管理費用：

表現費用：

營運、行政及服務開支：

年率 (佔本基金資產淨值的百分比)

A 類累積(美元)及 A 類累積(英鎊)：1.75%*

不適用

固定最高水平為 0.60%

*閣下應注意，本基金可藉向股東發給至少一個月的事先通知而上調上述費用至最高達所訂明的許可上限。請參閱安本標準基金的銷售文件以了解詳情。

其他費用

閣下買賣本基金的股份時或須繳付其他費用及收費。請參閱安本標準基金的銷售文件以了解詳情。

其他資料

- 閣下一般於香港代表在香港營業日(即香港銀行營業的日子，但星期六除外)下午五時正(香港時間)前收妥閣下的要求後，按隨後釐定的本基金資產淨值購買及贖回股份。閣下作出認購或贖回指示前，請向閣下的經銷人查詢經銷人的內部截止時間(可能較本基金的交易截止時間早)。
- 本基金每日計算資產淨值，並在www.aberdeenstandard.com.hk公布股份價格。此網站未經證監會審閱，並可能載有未經證監會認可的基金資料。
- 投資者可於www.aberdeenstandard.com.hk取得其他向香港投資者銷售的股份類別(如有)之過往業績資料。
- 投資者可向安本標準投資管理(香港)有限公司的客戶服務部索取經銷人的資料。

重要提示

閣下如有疑問，應諮詢專業意見。

證監會對本概要的內容並不承擔任何責任，對其準確性或完整性亦不作出任何陳述。