

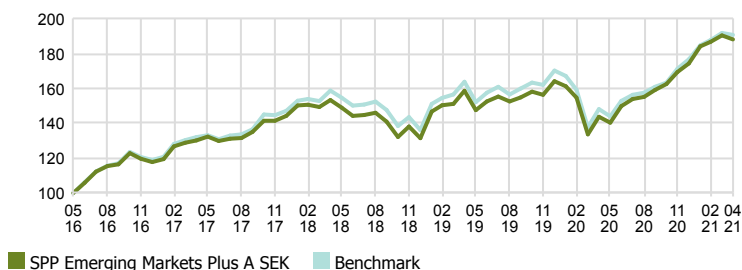
SPP Emerging Markets Plus is a fossil free index close global emerging markets equity fund that invests widely in various industries across these regions. The fund optimizes the selection of companies that ranked high in sustainability based on our model for sustainability rating. The fund can also invest up to 10 percent in companies with concentration on sustainable solutions, such as renewable energy companies. The fund follows our criteria for sustainable investments. This means that we do not invest in companies that contribute to the violation of human rights, corruption, harming the climate and environment, the production of landmines, cluster munitions, or nuclear weapons. In addition, the Fund also refrain from investing in companies whose turnover is more than 5 percent from production/distribution from: fossil fuels, weapons/arms, tobacco, alcohol, gambling, pornography, cannabis and companies with large fossil reserves.

SPP Emerging Markets Plus A SEK - Monthly Returns

	Year	Year, benchmark	Jan	Feb	Mar	Apr	May	Jun	Jul	Aug	Sep	Oct	Nov	Dec
2021	7.90	7.94	5.60	1.43	1.96	-1.20	-	-	-	-	-	-	-	-
2020	6.27	3.79	-1.76	-4.02	-13.60	7.50	-2.37	6.81	2.71	0.81	2.55	2.12	4.27	2.92
2019	24.81	25.05	11.59	2.46	0.53	5.00	-7.03	3.40	1.86	-1.79	1.45	2.14	-1.12	4.96
2018	-8.87	-7.50	4.13	0.25	-0.84	2.72	-2.93	-3.09	0.35	0.87	-3.48	-6.23	4.47	-4.80
2017	22.58	23.73	1.46	6.11	1.65	1.05	1.65	-1.84	1.02	0.23	2.73	4.70	0.01	1.99

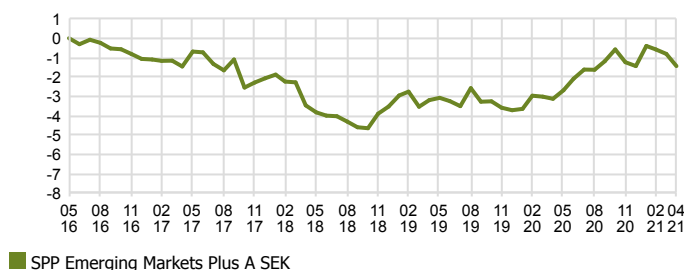
Investment Performance

Time Period: 2016-05-30 to 2021-04-30



Excess Performance

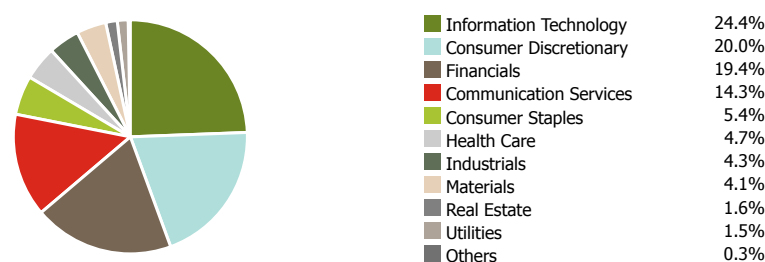
Time Period: 2016-05-30 to 2021-04-30



Fund Country Breakdown



Fund Sector Breakdown



Facts

Manager	Henrik Wold Nilsen	STD 3 yr, fund	16.29
AUM	12,091 MSEK	STD 3 yr, benchmark	16.13
KIID Risk (1-7)	5	Tracking Error 3 yr	1.61
NAV (2021-04-30)	188.22 SEK	Information Ratio 3 yr	0.45
Morningstar Rating, total (2021-04-30)	4	Sharpe Ratio 3 yr	0.5
Management Fees %	0.50	Beta 3 yr	1.0
Ongoing Charges %	0.54	R ² 3 yr	99.0
Max Drawdown Recovery Period	8 months	ISIN	SE0008129969
Number Of Holdings	631		

Last Month

Time Period: 2021-03-31 to 2021-04-30



Trailing Returns

As Of Date: 2021-04-30

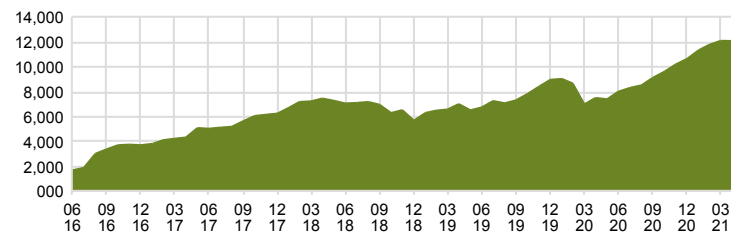
Accumulated since	Fund	Benchmark	Relative
1 m	-1.20	-0.57	-0.63
YTD	7.90	7.94	-0.04
1 yr	30.92	28.75	2.18
3 yr	22.66	20.19	2.47
5 yr	0.00	0.00	0.00
Annualized			
3 yr	7.04	6.32	0.72
5 yr	0.00	0.00	0.00

Top Ten Positions

	Weight %
Taiwan Semiconductor	6.2
Tencent Holdings Ltd	5.6
Alibaba Group Holding Ltd	5.2
Samsung Electronics	3.8
Meituan Dianping	1.9
China Construction Bank - H	1.2
SK Hynix Inc	1.2
Naspers Ltd-N	1.1
Ping An Insurance Group	0.9
Mediatek	0.8
Sum	27.9

Total Assets

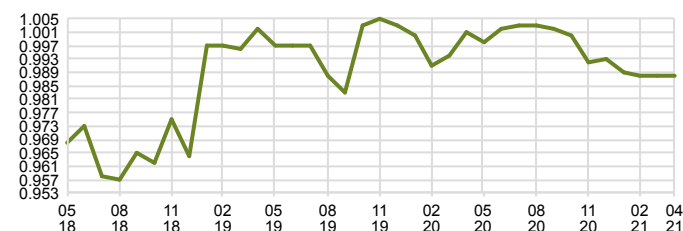
Time Period: 2016-06-30 to 2021-04-30



Rolling Beta

Time Period: 2018-05-31 to 2021-04-30

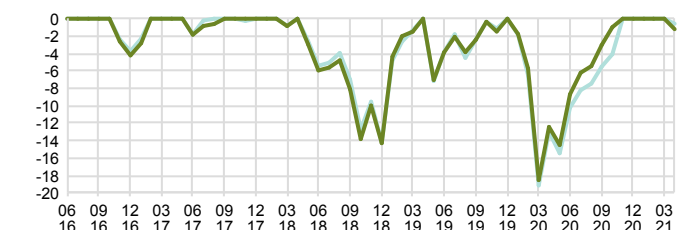
Rolling Window: 2 Years 1 Month shift



■ SPP Emerging Markets Plus A SEK

Drawdown

Time Period: 2016-06-30 to 2021-04-30

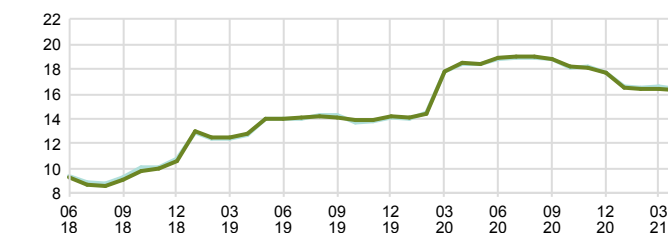


■ SPP Emerging Markets Plus A SEK ■ Benchmark

Standard Deviation

Time Period: 2018-06-30 to 2021-04-30

Rolling Window: 2 Years 1 Month shift

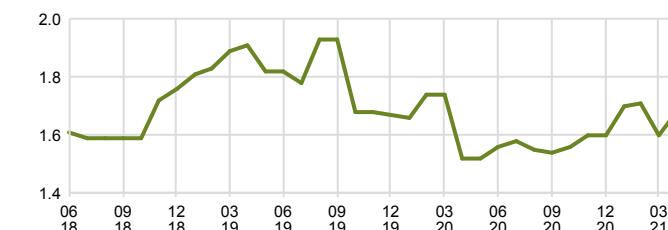


■ SPP Emerging Markets Plus A SEK ■ Benchmark

Tracking Error

Time Period: 2018-06-30 to 2021-04-30

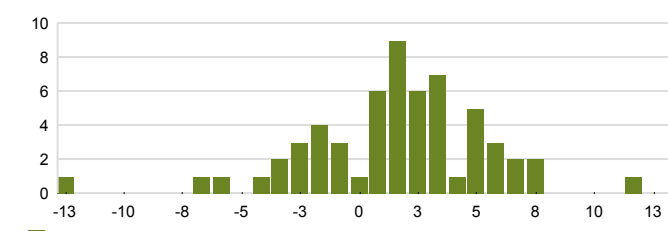
Rolling Window: 2 Years 1 Month shift



■ SPP Emerging Markets Plus A SEK

Monthly Return Distribution

Time Period: 2016-06-30 to 2021-04-30



■ SPP Emerging Markets Plus A SEK

Sector Attribution - Year To Date

	Portfolio			Benchmark			Analysis			
	Average Weight	Return	Contribution	Average Weight	Return	Contribution	Allocation	Selection	Currency Effect	Total Effect
Cash	0.4	0.0	0.0	0.0	0.0	0.0	0.0	0.0	0.0	0.0
Energy	0.0	0.0	0.0	4.8	5.3	0.3	0.1	0.0	-0.1	0.0
Materials	3.9	11.5	0.4	7.8	21.8	1.6	-0.6	-0.4	0.0	-1.0
Industrials	4.3	6.5	0.3	4.3	10.4	0.5	0.0	-0.2	0.0	-0.2
Consumer Discretionary	21.3	2.7	0.7	18.5	0.4	0.1	-0.1	0.5	0.0	0.4
Consumer Staples	5.4	3.5	0.2	5.6	0.6	0.0	0.0	0.2	0.0	0.2
Health Care	4.7	5.3	0.3	4.5	5.3	0.3	0.0	0.0	0.0	0.0
Financials	19.0	7.2	1.4	17.8	7.4	1.3	0.0	0.0	0.0	-0.1
Information Technology	23.1	15.5	3.1	20.9	11.9	2.4	0.0	0.6	0.1	0.7
Communication Services	14.8	10.1	1.5	12.0	11.1	1.2	0.2	-0.1	0.0	0.1
Utilities	1.5	4.7	0.1	1.9	4.9	0.1	0.0	0.0	0.0	0.0
Real Estate	1.6	5.2	0.1	1.8	4.7	0.1	0.0	0.0	0.0	0.0
Undefined	0.0	0.0	0.0	0.0	0.0	0.0	0.0	0.0	0.0	0.0
	100.0		8.0	100.0		7.9	-0.5	0.6	0.0	0.2