

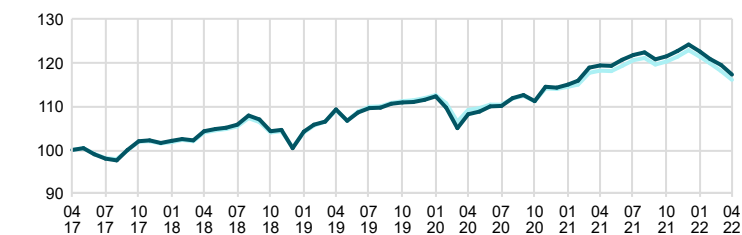
SPP Generation 50-tal is a mixed fund which, with a large spread, invests in major equity and interest rate markets throughout the world. The fund is also a generation fund, which means that the older you get, the less risk the fund adopts. This is achieved by the fund having a pre-determined plan for the gradual reduction of the fund's equity share, and respective gradual increase in the funds interest rate share over time. The de-escalation of the equity share takes place over a 20-year period, with the funds equity share amounting to at least 80 per cent when de-escalation starts. The funds de-escalation started in 2010. The fund follows our criteria for sustainable investments. This means that we do not invest in companies that contribute to the violation of human rights, corruption, harming the climate and environment, the production of landmines, cluster munitions, or nuclear weapons. In addition, the Fund also refrain from investing in companies whose turnover is more than 5 percent from production/distribution from: fossil fuels, weapons/arms, tobacco, alcohol, gambling, pornography, cannabis and companies with large fossil reserves.

## SPP Generation 50-tal - Monthly Returns

	Year	Year, benchmark	Jan	Feb	Mar	Apr	May	Jun	Jul	Aug	Sep	Oct	Nov	Dec
2022	-5.56	-5.55	-1.30	-1.40	-1.14	-1.84	-	-	-	-	-	-	-	-
2021	8.68	7.83	0.63	0.80	2.53	0.40	-0.01	1.16	0.89	0.53	-1.34	0.55	1.01	1.25
2020	2.54	1.89	0.70	-2.26	-4.31	3.10	0.55	1.10	0.08	1.63	0.62	-1.25	3.00	-0.20
2019	11.04	11.18	3.77	1.57	0.68	2.59	-2.39	1.79	0.98	0.07	0.76	0.29	0.13	0.41
2018	-1.22	-0.90	0.46	0.39	-0.32	2.12	0.40	0.31	0.68	1.98	-0.81	-2.57	0.29	-3.99

## Investment Performance

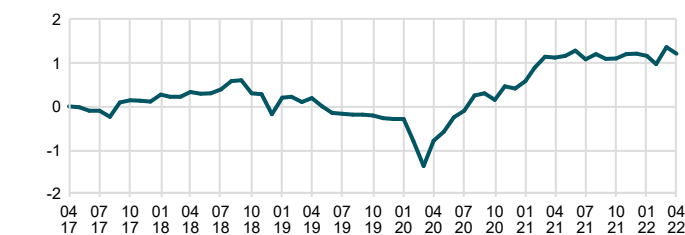
Time Period: 2017-04-30 to 2022-04-30



■ SPP Generation 50-tal ■ Benchmark

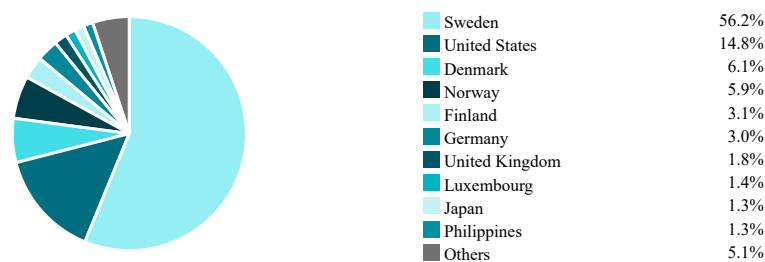
## Excess Performance

Time Period: 2017-04-30 to 2022-04-30



■ SPP Generation 50-tal

## Fund Country Breakdown

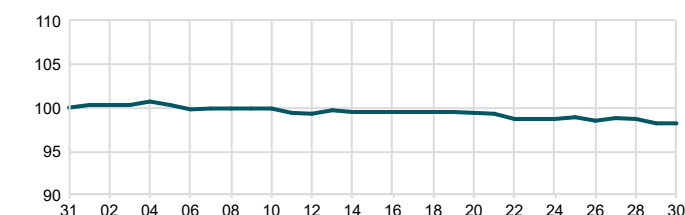


## Facts

Manager	Olav Chen	STD 3 yr, fund	5.29
AUM	18,334 MSEK	STD 3 yr, benchmark	4.73
KIID Risk (1-7)	4	Tracking Error 3 yr	0.81
NAV (2022-04-29)	414.18 SEK	Information Ratio 3 yr	0.39
Morningstar Rating, total (2022-04-29)	4	Sharpe Ratio 3 yr	0.5
Management Fees %	0.40	Beta 3 yr	1.1
Ongoing Charges %	0.41	R <sup>2</sup> 3 yr	98.7
Max Drawdown Recovery Period	4 months	ISIN	SE0001095852
Number Of Holdings	1253		

## Last Month

Time Period: 2022-03-31 to 2022-04-30



■ SPP Generation 50-tal

## Trailing Returns

As Of Date: 2022-04-30

Accumulated since	Fund	Benchmark	Relative
1 m	-1.84	-1.69	-0.15
YTD	-5.56	-5.55	-0.01
1 yr	-1.70	-1.79	0.09
3 yr	7.34	6.35	0.99
5 yr	17.32	16.07	1.25
Annualized			
3 yr	2.39	2.07	0.32
5 yr	3.24	3.02	0.22

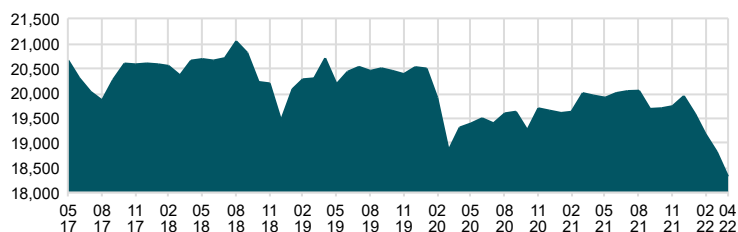
## Top Ten Positions

	Weight %
Swedish Government 2.5 12/05/2025 1058	7.4
SPP Emerging Markets SRI A SEK	3.4
Skandinaviska Enskilda Banken 1% 2024/12/18 -579	2.9
Nykredit Realkredit A/S FRN 2023/04/01 COVID	1.7
Stadshypotek AB 1.500% 2024/12/03 - 1589	1.7
Kommunalbanken AS 19/24 0,50% SEK	1.7
Swedish Covered Bond 1.00% 2024/06/12 -145	1.6
Deutsche Pfandbriefbank AG FRN 2024/04/15 COV	1.4
Swedish Government 0.75 29/11/12 1061	1.4
European Investment Bank 1.250% 2025/05/12	1.3
Sum	24.5

Currency: SEK. All performance related information is net of fees. Please note that historical return is no guarantee of future return. The value of your fund savings can both rise and fall, and you may get back less than you invested. The fund is allowed to invest more than 35 percent of the fund's assets in debt securities issued by the Swedish state. All our funds are managed according to a sustainability strategy based on the methods Solutions, Exclusions & Active ownership, please see more information at sppfonder.se. SPP Fonder may not be held liable for any errors contained in this information. Neither Morningstar nor SPP Fonder is responsible for any damages, whether directly or indirectly caused by any shortcomings or errors in this information. Investors should not rely on this information without having made proper checks. Investors and potential investors should be aware that marketing of the funds outside of Sweden may be restricted or unlawful. Information about in which countries, outside of Sweden, some of the funds are marketed is disclosed in the funds' prospectuses. Prospectuses and key investor information documents for the funds are available on our website sppfonder.se. www.sppfonder.se.

### Total Assets

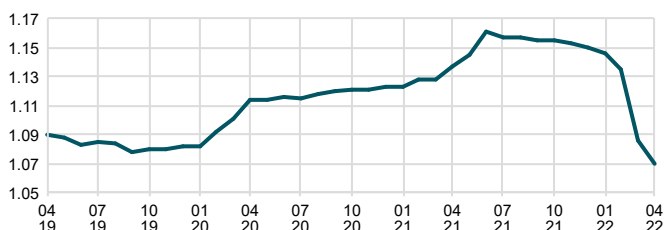
Time Period: 2017-05-31 to 2022-04-30



### Rolling Beta

Time Period: 2019-04-30 to 2022-04-30

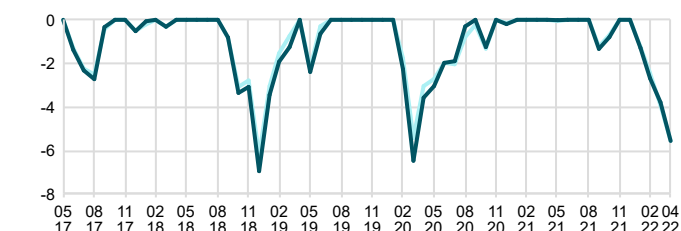
Rolling Window: 2 Years 1 Month shift



■ SPP Generation 50-tal

### Drawdown

Time Period: 2017-05-31 to 2022-04-30

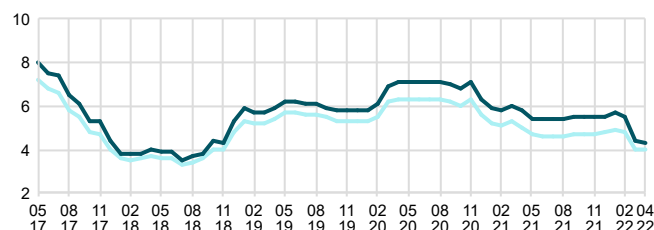


■ SPP Generation 50-tal   ■ Benchmark

### Standard Deviation

Time Period: 2017-05-31 to 2022-04-30

Rolling Window: 2 Years 1 Month shift

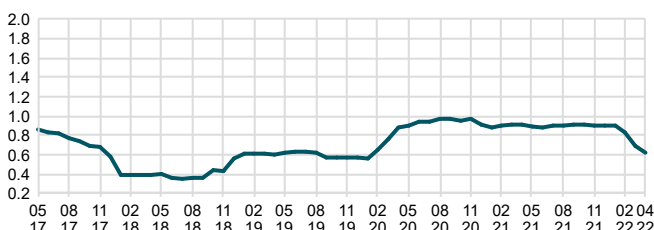


■ SPP Generation 50-tal   ■ Benchmark

### Tracking Error

Time Period: 2017-05-31 to 2022-04-30

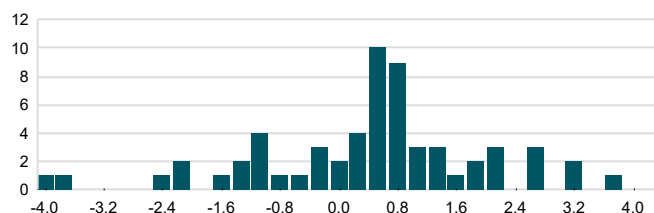
Rolling Window: 2 Years 1 Month shift



■ SPP Generation 50-tal

### Monthly Return Distribution

Time Period: 2017-05-31 to 2022-04-30



■ SPP Generation 50-tal