

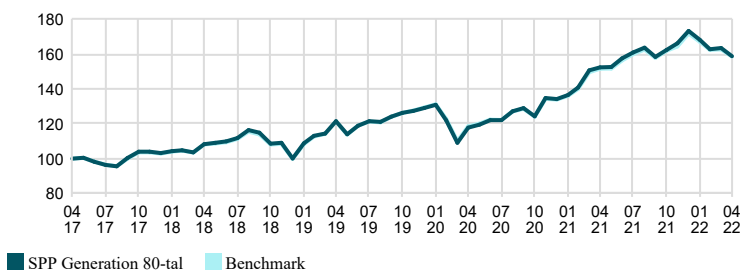
SPP Generation 80-tal is a mixed fund which, with a large spread, invests in major equity and interest rate markets throughout the world. The fund is also a generation fund, which means that the older you get, the less risk the fund adopts. This is achieved by the fund having a pre-determined plan for the gradual reduction of the funds equity share, and respective gradual increase in the funds interest rate share over time. The de-escalation of the equity share takes place over a 20-year period, starting in 2040. When de-escalation begins in 2040, the funds equity share will amount to at least 80 per cent. The fund follows our criteria for sustainable investments. This means that we do not invest in companies that contribute to the violation of human rights, corruption, harming the climate and environment, the production of landmines, cluster munitions, or nuclear weapons. In addition, the Fund also refrain from investing in companies whose turnover is more than 5 percent from production/distribution from: fossil fuels, weapons/arms, tobacco, alcohol, gambling, pornography, cannabis and companies with large fossil reserves.

SPP Generation 80-tal - Monthly Returns

	Year	Year, benchmark	Jan	Feb	Mar	Apr	May	Jun	Jul	Aug	Sep	Oct	Nov	Dec
2022	-8.40	-7.66	-2.98	-3.16	0.41	-2.91	-	-	-	-	-	-	-	-
2021	29.12	28.30	1.66	3.15	7.10	1.10	0.16	3.27	2.16	1.68	-3.23	2.52	2.33	4.27
2020	3.95	3.50	1.34	-6.80	-10.56	7.99	1.44	2.21	-0.06	4.18	1.43	-3.63	8.47	-0.44
2019	28.96	29.49	8.63	3.94	1.21	6.14	-6.17	4.32	2.20	-0.34	2.51	1.71	0.89	1.37
2018	-2.93	-2.88	1.10	0.49	-1.13	4.55	0.74	0.69	1.73	4.17	-1.33	-5.51	0.45	-8.18

Investment Performance

Time Period: 2017-04-30 to 2022-04-30



■ SPP Generation 80-tal ■ Benchmark

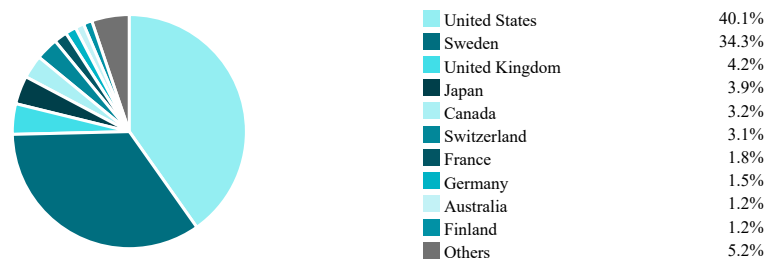
Excess Performance

Time Period: 2017-04-30 to 2022-04-30



■ SPP Generation 80-tal

Fund Country Breakdown

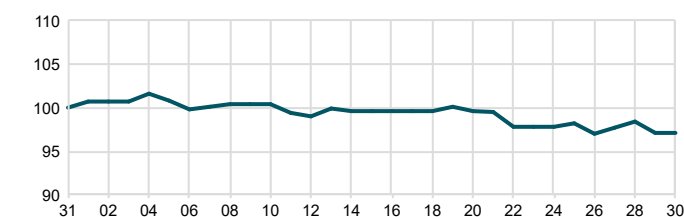


Facts

Manager	Olav Chen	STD 3 yr, fund	13.63
AUM	4,283 MSEK	STD 3 yr, benchmark	13.17
KIID Risk (1-7)	5	Tracking Error 3 yr	0.86
NAV (2022-04-29)	170.32 SEK	Information Ratio 3 yr	-0.04
Morningstar Rating, total (2022-04-29)	4	Sharpe Ratio 3 yr	0.7
Management Fees %	0.40	Beta 3 yr	1.0
Ongoing Charges %	0.41	R ² 3 yr	99.7
Max Drawdown Recovery Period	8 months	ISIN	SE0000619355
Number Of Holdings	1053		

Last Month

Time Period: 2022-03-31 to 2022-04-30



■ SPP Generation 80-tal

Trailing Returns

As Of Date: 2022-04-30

Accumulated since	Fund	Benchmark	Relative
1 m	-2.91	-2.50	-0.41
YTD	-8.40	-7.66	-0.74
1 yr	4.17	4.65	-0.48
3 yr	30.71	30.84	-0.13
5 yr	58.76	58.66	0.10
Annualized			
3 yr	9.33	9.36	-0.04
5 yr	9.68	9.67	0.01

Top Ten Positions

	Weight %
SPP Emerging Markets SRI A SEK	6.3
Atlas Copco AB	3.3
Apple Inc	3.0
Microsoft	2.3
Investor AB-B	2.3
Assa Abloy B	1.7
Ericsson LM-B SHS	1.6
Skandinaviska Enskilda Banken A	1.5
Volvo B	1.5
Sandvik	1.4
Sum	24.9

Total Assets

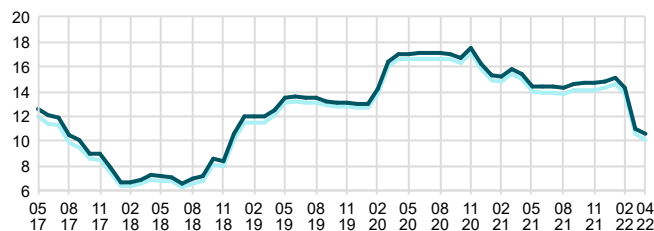
Time Period: 2017-05-31 to 2022-04-30



Standard Deviation

Time Period: 2017-05-31 to 2022-04-30

Rolling Window: 2 Years 1 Month shift



■ SPP Generation 80-tal ■ Benchmark

Rolling Beta

Time Period: 2019-04-30 to 2022-04-30

Rolling Window: 2 Years 1 Month shift

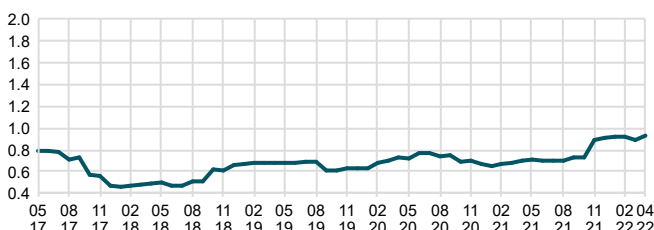


■ SPP Generation 80-tal

Tracking Error

Time Period: 2017-05-31 to 2022-04-30

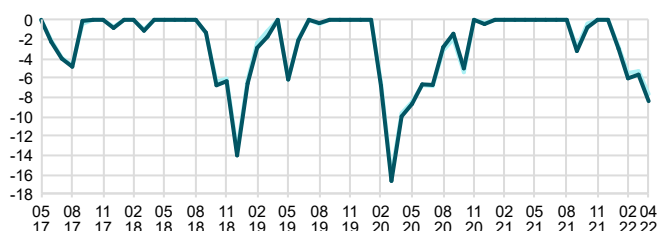
Rolling Window: 2 Years 1 Month shift



■ SPP Generation 80-tal

Drawdown

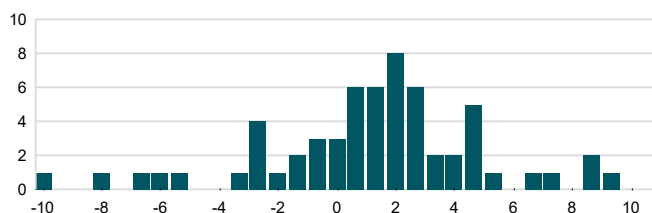
Time Period: 2017-05-31 to 2022-04-30



■ SPP Generation 80-tal ■ Benchmark

Monthly Return Distribution

Time Period: 2017-05-31 to 2022-04-30



■ SPP Generation 80-tal