

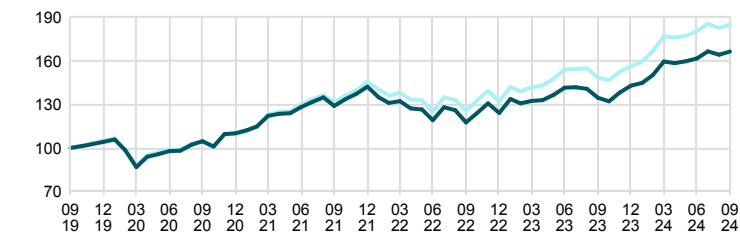
SPP Mix 100 is a global, actively managed fund of funds that mainly invests in equity funds within the Storebrand Group. Normally, exposure is 25% in the Swedish stock market and 75% in the foreign equity markets, including emerging markets. The exposure to the Swedish stock market that normally is 25% may deviate by a maximum of +/- 15 percentage points. Otherwise, the fund has no fixed allocation between different geographic markets or industries. With the help of analysis and selection, the manager makes active investment decisions and allocates the fund's exposure between regions. The fund follows our standard for sustainable investments, which means, among other things, that we refrain from investing in companies that are in breach of international standards and conventions. These include human rights, labour law and international law, corruption and financial crime, serious climate and environmental damage, and controversial weapons (land mines, cluster bombs and nuclear weapons). We also exclude companies where more than 5 per cent of net sales come from the production and/or distribution of fossil fuels, tobacco, weapons, alcohol, gambling, pornography, cannabis, or companies with large fossil reserves.

SPP Mix 100 - Monthly Returns

	Year	Year, benchmark	Jan	Feb	Mar	Apr	May	Jun	Jul	Aug	Sep	Oct	Nov	Dec
2024	16.50	18.25	1.34	3.65	6.27	-0.70	0.84	1.20	3.04	-1.39	1.36	-	-	-
2023	15.09	18.61	7.72	-2.29	1.33	0.34	2.77	3.60	0.23	-0.74	-4.36	-1.83	4.62	3.37
2022	-12.67	-9.50	-5.10	-2.92	0.89	-3.72	-0.61	-5.85	7.49	-1.57	-6.61	5.48	5.33	-5.02
2021	29.08	32.82	1.91	2.32	6.31	1.19	0.26	3.43	2.72	2.40	-4.35	3.61	2.74	3.61
2020	5.69	4.61	1.53	-6.92	-11.85	8.19	1.85	2.23	0.32	4.17	2.31	-3.45	8.46	0.58

Investment Performance

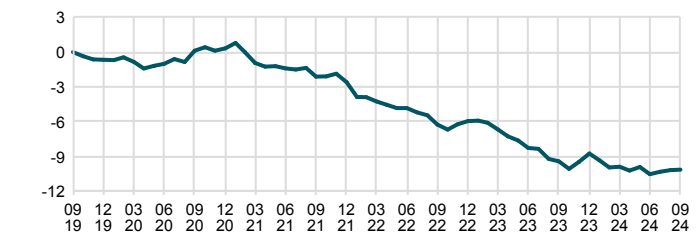
Time Period: 2019-09-30 to 2024-09-30



■ SPP Mix 100 ■ Benchmark

Excess Performance

Time Period: 2019-09-30 to 2024-09-30



■ SPP Mix 100

Fund Country Breakdown

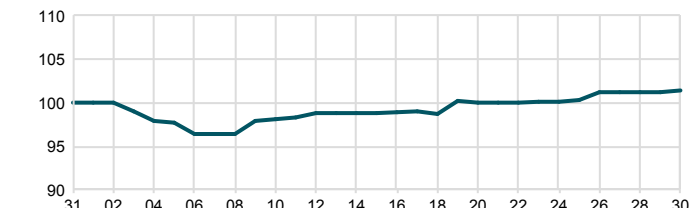


Facts

Manager	Tore Jørgen Rye	STD 3 yr, fund	12.97
AUM	0,990 MSEK	STD 3 yr, benchmark	12.60
KID Risk (1-7)	4	Tracking Error 3 yr	1.63
NAV (2024-09-30)	262.49 SEK	Information Ratio 3 yr	-1.93
Morningstar Rating, total (2024-09-30)	3	Sharpe Ratio 3 yr	0.7
Management Fees %	0.79	Beta 3 yr	1.0
Ongoing Charges %	0.8	R ² 3 yr	98.5
Max Drawdown Recovery Period	8 months	ISIN	SE0007279781
Number Of Holdings	13		

Last Month

Time Period: 2024-08-31 to 2024-09-30



■ SPP Mix 100

Trailing Returns

As Of Date: 2024-09-30

Accumulated since	Fund	Benchmark	Relative
1 m	1.36	1.31	0.05
YTD	16.50	18.25	-1.76
1 yr	23.67	24.67	-1.00
3 yr	29.14	40.66	-11.52
5 yr	66.45	85.00	-18.55
Annualized			
3 yr	8.89	12.03	-3.14
5 yr	10.71	13.08	-2.36

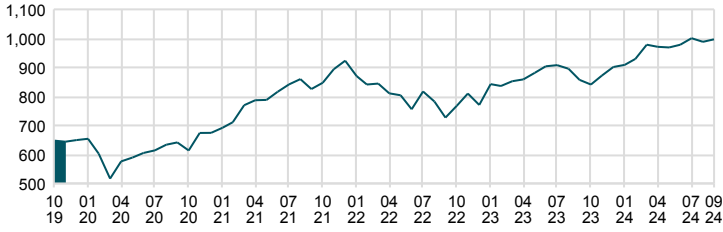
Top Ten Positions

	Weight %
Storebrand Global All Countries A SEK	17.6
Storebrand USA A SEK	16.2
Storebrand Global Plus A SEK	16.1
Storebrand Sverige A SEK	10.0
Storebrand Sverige Plus A SEK	10.0
Storebrand Europa A SEK	7.0
Storebrand Sverige Småbolag Plus A SEK	6.0
Storebrand Emerging Markets Plus A SEK	4.1
Storebrand Emerging Markets A SEK	4.0
Storebrand Global Multifactor A SEK	3.0
Sum	94.0

Currency: SEK All performance related information is net of fees. Please note that historical return is no guarantee of future return. The value of your fund savings can both rise and fall, and you may get back less than you invested. The fund is allowed to invest more than 35 percent of the fund's assets in debt securities issued by the Swedish state. All our funds are managed according to a sustainability strategy based on the methods Solutions, Exclusions & Active ownership, please see more information at www.storebrandfonder.se/hallbarhet. Storebrand Fonder may not be held liable for any errors contained in this information. Neither Morningstar nor Storebrand Fonder is responsible for any damages, whether directly or indirectly caused by any shortcomings or errors in this information. Investors should not rely on this information without having made proper checks. Investors and potential investors should be aware that marketing of the funds outside of Sweden may be restricted or unlawful. Information about in which countries, outside of Sweden, some of the funds are marketed is disclosed in the funds' prospectuses. Prospectuses and key investor information documents for the funds are available on our website www.storebrandfonder.se/fakta.

Total Assets

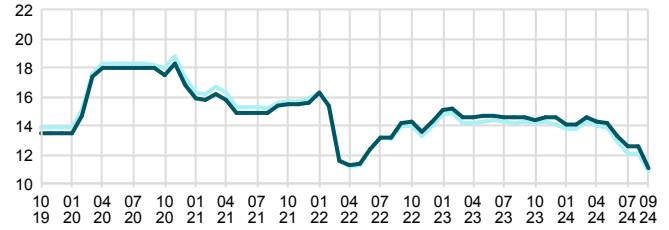
Time Period: 2019-10-31 to 2024-09-30



Standard Deviation

Time Period: 2019-10-31 to 2024-09-30

Rolling Window: 2 Years 1 Month shift

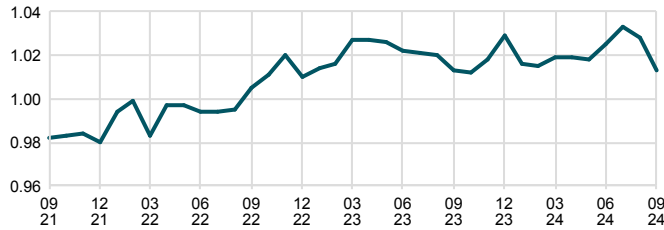


■ SPP Mix 100 ■ Benchmark

Rolling Beta

Time Period: 2021-09-30 to 2024-09-30

Rolling Window: 2 Years 1 Month shift

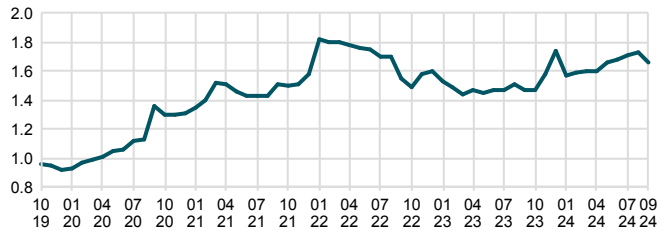


■ SPP Mix 100

Tracking Error

Time Period: 2019-10-31 to 2024-09-30

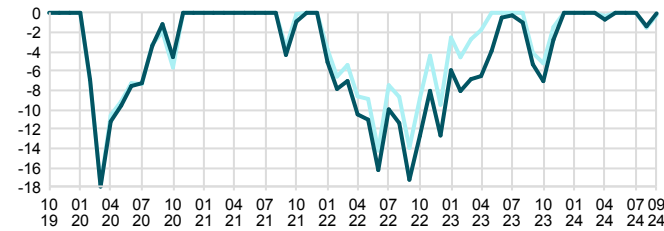
Rolling Window: 2 Years 1 Month shift



■ SPP Mix 100

Drawdown

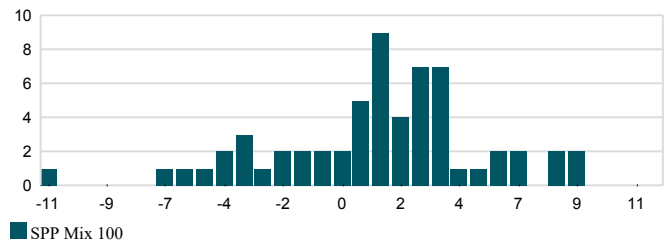
Time Period: 2019-10-31 to 2024-09-30



■ SPP Mix 100 ■ Benchmark

Monthly Return Distribution

Time Period: 2019-10-31 to 2024-09-30



■ SPP Mix 100