

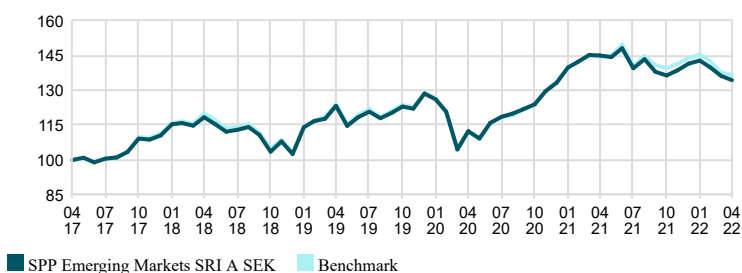
SPP Emerging Markets SRI is an equity fund which aims to track developments in emerging markets. The fund is managed as an indextracking fund and does not adopt any active positions versus the market. We usually invest in approximately 650 to 850 shares, spread across many different industries and countries. The fund follows our criteria for sustainable investments. This means that we do not invest in companies that contribute to the violation of human rights, corruption, harming the climate and environment, the production of landmines, cluster munitions, or nuclear weapons. In addition, the Fund also refrain from investing in companies whose turnover is more than 5 percent from production/distribution from: fossil fuels, weapons/arms, tobacco, alcohol, gambling, pornography, cannabis and companies with large fossil reserves.

SPP Emerging Markets SRI A SEK - Monthly Returns

	Year	Year, benchmark	Jan	Feb	Mar	Apr	May	Jun	Jul	Aug	Sep	Oct	Nov	Dec
2022	-4.97	-4.97	0.94	-1.92	-2.72	-1.33	-	-	-	-	-	-	-	-
2021	6.11	7.44	4.83	1.81	2.07	-0.19	-0.45	2.62	-5.81	2.86	-3.78	-1.16	1.63	2.03
2020	3.70	3.79	-1.91	-4.21	-13.42	7.42	-2.73	6.12	2.23	1.19	1.64	1.73	4.52	2.84
2019	25.24	25.05	11.15	2.30	0.88	4.74	-7.00	3.24	1.98	-2.32	1.88	2.34	-0.71	5.28
2018	-7.17	-7.50	4.32	0.45	-0.89	3.13	-2.59	-2.70	0.67	1.07	-2.96	-6.54	4.22	-4.91

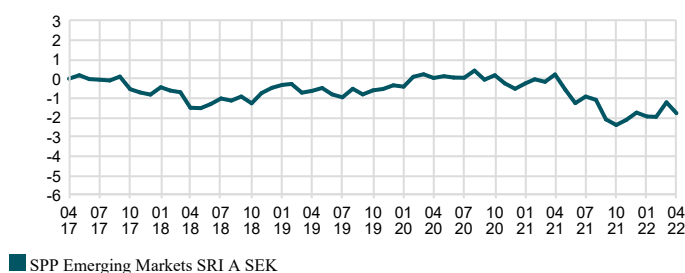
Investment Performance

Time Period: 2017-04-30 to 2022-04-30

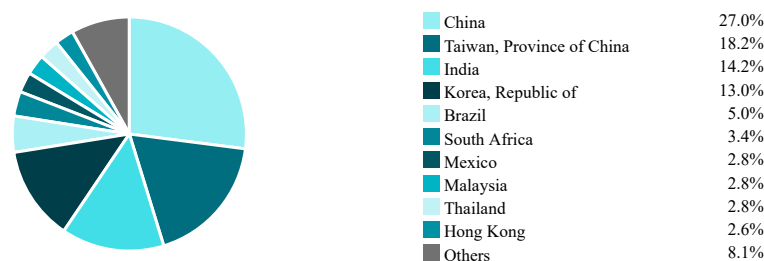


Excess Performance

Time Period: 2017-04-30 to 2022-04-30

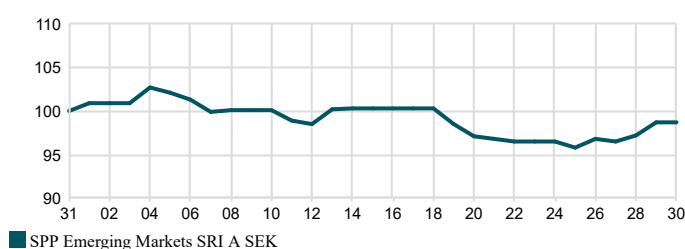


Fund Country Breakdown

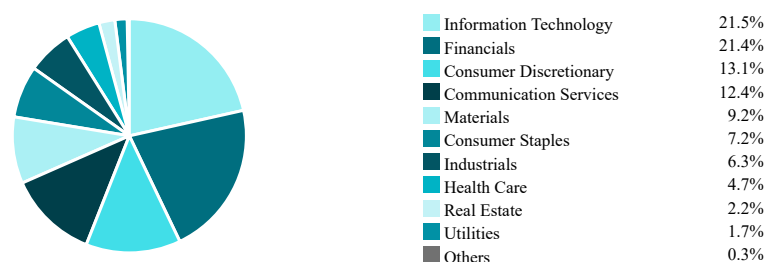


Last Month

Time Period: 2022-03-31 to 2022-04-30



Fund Sector Breakdown



Trailing Returns

As Of Date: 2022-04-30

Accumulated since	Fund	Benchmark	Relative
1 m	-1.33	-0.76	-0.57
YTD	-4.97	-4.97	0.00
1 yr	-7.26	-5.41	-1.85
3 yr	9.00	10.10	-1.10
5 yr	34.43	36.62	-2.20
Annualized			
3 yr	2.91	3.26	-0.34
5 yr	6.09	6.44	-0.34

Facts

Manager	Henrik Wold Nilsen	STD 3 yr, fund	14.18
AUM	11,371 MSEK	STD 3 yr, benchmark	14.48
KIID Risk (1-7)	5	Tracking Error 3 yr	1.36
NAV (2022-04-29)	161.15 SEK	Information Ratio 3 yr	-0.25
Morningstar Rating, total (2022-04-29)	4	Sharpe Ratio 3 yr	0.3
Management Fees %	0.40	Beta 3 yr	1.0
Ongoing Charges %	0.43	R ² 3 yr	99.1
Max Drawdown Recovery Period	8 months	ISIN	SE0003455658
Number Of Holdings	818		

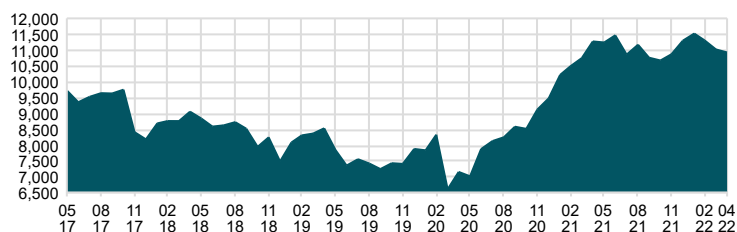
Top Ten Positions

	Weight %
Taiwan Semiconductor	6.5
Tencent Holdings Ltd	4.1
Samsung Electronics	3.7
Alibaba Group Holding Ltd	3.0
Meituan Dianping	1.4
Infosys Limited	1.3
China Construction Bank - H	1.1
SK Hynix Inc	0.7
Icici Bank	0.7
JD.com Inc	0.7
Sum	23.2

Currency: SEK. All performance related information is net of fees. Please note that historical return is no guarantee of future return. The value of your fund savings can both rise and fall, and you may get back less than you invested. A fund with risk class 6-7 may, due to its composition and the fund company's management methods, decrease and increase substantially in value. All our funds are managed according to a sustainability strategy based on the methods Solutions, Exclusions & Active ownership, please see more information at sppfonder.se. SPP Fonder may not be held liable for any errors contained in this information. Neither Morningstar nor SPP Fonder is responsible for any damages, whether directly or indirectly caused by any shortcomings or errors in this information. Investors should not rely on this information without having made proper checks. Attribution calculated from gross-of-fees prices. Investors and potential investors should be aware that marketing of the funds outside of Sweden may be restricted or unlawful. Information about in which countries, outside of Sweden, some of the funds are marketed is disclosed in the funds' prospectuses. Prospectuses and key investor information documents for the funds are available on our website sppfonder.se/www.sppfonder.se.

Total Assets

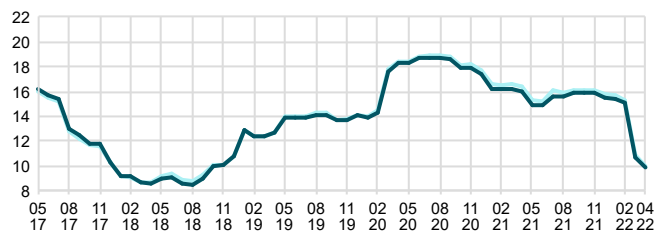
Time Period: 2017-05-31 to 2022-04-30



Standard Deviation

Time Period: 2017-05-31 to 2022-04-30

Rolling Window: 2 Years 1 Month shift



■ SPP Emerging Markets SRI A SEK ■ Benchmark

Rolling Beta

Time Period: 2019-04-30 to 2022-04-30

Rolling Window: 2 Years 1 Month shift

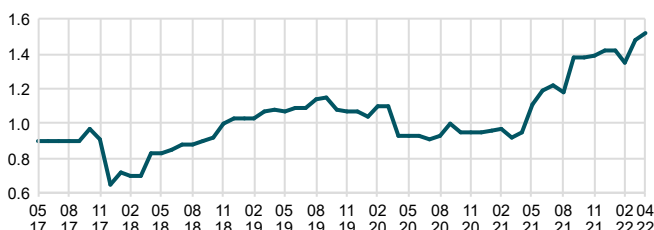


■ SPP Emerging Markets SRI A SEK

Tracking Error

Time Period: 2017-05-31 to 2022-04-30

Rolling Window: 2 Years 1 Month shift



■ SPP Emerging Markets SRI A SEK

Drawdown

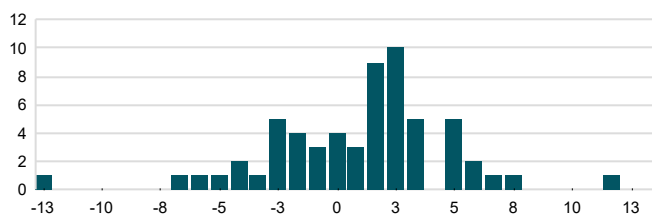
Time Period: 2017-05-31 to 2022-04-30



■ SPP Emerging Markets SRI A SEK ■ Benchmark

Monthly Return Distribution

Time Period: 2017-05-31 to 2022-04-30



■ SPP Emerging Markets SRI A SEK

Sector Attribution - Year To Date

	Portfolio			Benchmark			Analysis			
	Average Weight	Return	Contribution	Average Weight	Return	Contribution	Allocation	Selection	Currency Effect	Total Effect
Cash	0.4	0.0	0.0	0.0	0.0	0.0	0.1	0.0	0.0	0.0
Energy	0.0	-0.1	0.0	5.3	-14.2	-0.8	0.2	0.0	0.1	0.3
Materials	9.1	0.6	0.0	9.1	2.7	0.2	0.0	-0.3	0.2	-0.1
Industrials	6.0	3.4	0.2	5.4	0.4	0.0	0.0	0.1	0.1	0.2
Consumer Discretionary	13.1	-12.2	-1.6	12.6	-12.1	-1.5	0.0	0.0	0.0	-0.1
Consumer Staples	7.0	-5.6	-0.4	5.8	-2.9	-0.2	0.0	-0.2	0.1	-0.1
Health Care	4.5	-11.3	-0.5	3.9	-14.6	-0.6	-0.1	0.1	0.1	0.1
Financials	21.2	5.5	1.0	21.4	8.7	1.6	0.0	-0.7	0.1	-0.6
Information Technology	22.9	-13.7	-3.3	21.7	-14.2	-3.3	-0.1	0.1	0.0	0.1
Communication Services	12.1	-5.4	-0.6	10.4	-7.5	-0.8	0.0	0.2	0.1	0.3
Utilities	1.5	21.7	0.3	2.5	9.1	0.2	-0.1	0.2	0.0	0.0
Real Estate	2.1	4.1	0.1	2.0	4.3	0.1	0.0	0.0	0.0	0.0
Undefined	0.1	0.0	0.0	0.1	4.1	0.0	0.0	0.0	0.0	0.0
	100.0		-4.8	100.0		-5.0	0.0	-0.4	0.8	0.3