

Investment Objective

To achieve long-term capital growth from an actively managed portfolio made up primarily of securities issued by companies in China, both listed and unlisted, as well as Chinese companies listed elsewhere. The Company may also invest in companies with significant interests in China.

Investment Company Facts

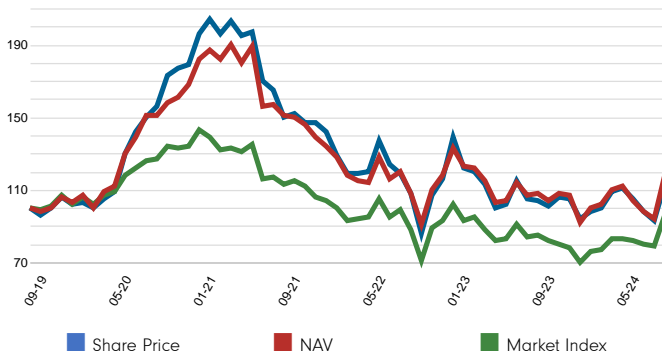
Launch date: 19.04.10
Portfolio manager: Dale Nicholls
Appointed to trust: 01.04.14
Years at Fidelity: 28
Total Net Assets (TNA): £ 1,302m
Ordinary shares in Issue: 516,349,147
Share price: 221.00p
NAV: 252.18p
Discount: 12.36%
Gross Market Gearing: 20.5%
Net Market Gearing: 17.0%

Performance comparator

Market Index: MSCI China Index (Net)

The same index is used in the positioning tables on this factsheet. Past performance is not a reliable indicator of future results. The value of investments can go down as well as up and you may get back less than you invested.

Cumulative performance in GBP (%)



Performance is shown for the last five years (or since launch for funds launched within that period).

Performance to 30.09.24 in GBP (%)

	1m	3m	YTD	1yr	3yr	5yr	Since 16.04.10*
Share Price Cumulative Growth	22.4	8.3	7.6	8.7	-24.3	13.4	171.8
NAV Cumulative Growth	24.8	13.0	10.6	8.8	-22.1	17.9	207.2
Index Cumulative Growth	21.4	16.4	22.9	12.7	-15.3	-4.2	75.4
Share Price Annualised Growth	-	-	-	-	-8.9	2.5	7.2
NAV Annualised Growth	-	-	-	-	-8.0	3.3	8.1
Index Annualised Growth	-	-	-	-	-5.4	-0.9	4.0

Basis: bid-bid with income reinvested, in GBP, net of fees.

Market indices are sourced from RIMES and other data is sourced from third-party providers such as Morningstar.

*Performance commencement date.

Key Risks

The value of investments can go down as well as up and you may not get back the amount invested. Overseas investments may be more volatile than established markets. The shares in the investment trust are listed on the London Stock Exchange and their price is affected by supply and demand. The investment trust can gain additional exposure to the market, known as gearing, potentially increasing volatility.

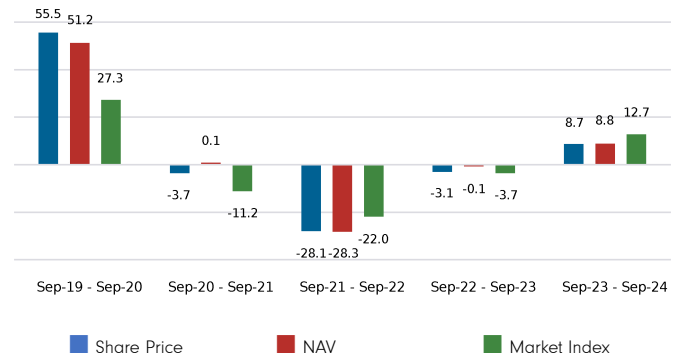
Portfolio Manager Commentary

China's recent policy stimulus announcements were encouraging for market sentiment, reflecting the rising commitment of its leadership to deal with deflation risks and achieve stabilization in the property market. However, we need to see an improvement in macroeconomic fundamentals, which could be aided by a well-executed additional fiscal policy support. Such developments should boost consumer confidence and unlock pent-up consumption potential among Chinese households, where balance sheets are in good shape. More concerted efforts to address the property market is also critical. Although valuations in China have now become less extreme, they are still attractive, with ample potential for expansion. The expectation is that these policies can contribute to a change in economic fundamentals, leading to a better earnings outlook and a sustained improvement in market sentiment.

Conviction positions in consumer and financials names contributed to performance, including holdings in Ping An Insurance, Qifu Technology, Crystal International and Hisense Home Appliances. Financials dragged relative performance, broadly due to the underweight position in large cap Chinese banks. The communication services sector was weighed by the long-standing underweight position in Tencent.

Over the 12 months to 30 September 2024, the Trust's NAV increased by 8.8%, underperforming its reference index, which delivered 12.7% over the same period. The Trust's share price increased 8.7%.

Performance for 12 month periods in GBP (%)



■ Share Price ■ NAV ■ Market Index

Equity Exposure % Total Net Assets (% TNA)

	Exposure (% TNA)
Gross Market Exposure	120.5
Net Equity	115.1
Other	2.0
Uninvested Cash	0.0

Notes on Portfolio Construction and a description of how data is calculated and presented are on page 3. Definitions of the terms used in the Equity Exposure table are in the Glossary.

Sector/Industry Exposure (% TNA)

GICS Sector	Fund	Index	Relative
Consumer Discretionary	37.1	32.0	5.1
Communication Services	19.8	21.7	-2.0
Industrials	19.5	4.8	14.7
Financials	17.9	16.7	1.2
Health Care	9.1	3.8	5.3
Consumer Staples	8.8	4.3	4.5
Information Technology	7.8	5.8	2.1
Materials	4.0	3.2	0.8
Real Estate	3.1	2.1	1.0
Energy	1.2	3.2	-1.9
Utilities	0.9	2.4	-1.5
Total Sector Exposure	129.4	100.0	
Other Index / Unclassified	-14.3	0.0	
Total Equity Exposure	115.1	100.0	

Market Capitalisation Exposure (% TNA)

GBP	Fund	Index	Relative
>10bn	39.8	72.7	-32.9
5-10bn	7.3	14.2	-6.9
1-5bn	25.4	7.6	17.8
0-1bn	34.7	0.1	34.6
Total Market Cap Exposure	107.3	94.7	
Index / Unclassified	7.7	5.3	
Total Equity Exposure	115.1	100.0	

Country Exposure (% TNA)

	Net	Index	Relative
China A-Shares	9.6	14.9	-5.3
China B-Shares	0.0	0.2	-0.2
China H-Shares*	18.5	23.1	-4.6
Red Chips*	9.8	4.2	5.6
OTHER STOCKS LISTED IN HK**	43.5	50.3	-6.8
CHINA STOCKS LISTED IN US	21.2	7.1	14.1
Listed in TAIWAN	0.5	0.0	0.5
Listed in SINGAPORE	0.0	0.0	0.0
Listed in UNITED KINGDOM	1.2	0.0	1.2
Listed in CANADA	0.0	0.0	0.0
Listed in GERMANY	1.1	0.0	1.1
Listed in JAPAN	1.5	0.0	1.5
US ADRs, NON-CHINA	0.0	0.2	-0.2
UNLISTED	9.9	0.0	9.9
Other	0.2	0.0	0.2
Grand Total	117.0	100.0	17.0

*As classified on Bloomberg

**Non-H-share and non-Red-Chip companies listed in Hong Kong, held by the fund or as part of MSCI China.

Top Positions (% TNA)

	GICS Sector	Geographic Location	Fund	Index	Relative
TENCENT HLDGS LTD	Communication Services	China	12.9	16.3	-3.4
PING AN INS GROUP CO CHINA LTD	Financials	China	6.1	2.1	4.0
ALIBABA GROUP HOLDING LTD	Consumer Discretionary	China	5.1	9.4	-4.2
PDD HOLDINGS INC	Consumer Discretionary	China	4.3	4.1	0.2
MEITUAN	Consumer Discretionary	China	2.9	4.8	-1.9
BYTEDANCE LTD	Communication Services	China	2.7	0.0	2.7
PONY AI INC	Consumer Discretionary	United States	2.4	0.0	2.4
TUHU CAR INC	Industrials	China	2.1	0.0	2.1
CRYSTAL INTERNATIONAL GROUP LTD	Consumer Discretionary	Hong Kong	2.0	0.0	2.0
CHINA FOODS LTD	Consumer Staples	China	1.9	0.0	1.9

Top Overweight Positions (% TNA)

	Fund	Index	Relative
PING AN INS GROUP CO CHINA LTD	6.1	2.1	4.0
BYTEDANCE LTD	2.7	0.0	2.7
PONY AI INC	2.4	0.0	2.4
TUHU CAR INC	2.1	0.0	2.1
CRYSTAL INTERNATIONAL GROUP LTD	2.0	0.0	2.0
CHINA FOODS LTD	1.9	0.0	1.9
VNET GROUP INC	1.9	0.0	1.9
HISENSE HOME APPLIANCES GROUP CO LTD	1.8	0.1	1.8
SINOTRANS LIMITED	1.7	0.0	1.7
VENTUROUS HOLDINGS LIMITED	1.6	0.0	1.6

Top Underweight Positions (% TNA)

	Fund	Index	Relative
ALIBABA GROUP HOLDING LTD	5.1	9.4	-4.2
TENCENT HLDGS LTD	12.9	16.3	-3.4
CHINA CONSTRUCTION BANK	0.0	3.2	-3.2
JD.COM INC	0.0	2.3	-2.3
INDUSTRIAL & COML BK CHINA	0.0	1.9	-1.9
XIAOMI CORP	0.0	1.9	-1.9
MEITUAN	2.9	4.8	-1.9
BYD CO LTD	0.0	1.9	-1.9
BANK OF CHINA LTD	0.0	1.7	-1.7
Short Position - name withheld	-1.1	0.4	-1.6

Positions Concentration (% TNA)

	Fund	Index
Top 10	42.4	47.9
Top 20	57.6	59.1
Top 50	86.8	73.3

Full portfolio listings, with the appropriate time lag as agreed by the Board, are available on request from Fidelity Investment Trusts. Figures may not always sum to totals due to rounding.

Approach and Style

The manager has a disciplined, bottom-up security selection approach. The fund seeks out investments in companies with good long-term prospects, cash generative businesses and companies controlled by strong management teams. Ideally these factors are not well understood by the market, and are therefore not reflected in valuations. The manager also focuses on smaller companies as these tend to be less well researched and, therefore, more mispriced. However, smaller companies tend to be higher risk, so risk management is key and meeting company management teams is essential in order to understand them and monitor their progress. On the long side, the manager looks for undervalued companies where returns are expected to go up over time.

Portfolio Construction – Explained

This factsheet contains information about the composition of the fund at a particular point in time. It aims to help you understand how the fund manager is positioned to achieve the fund's objectives.

The Equity Exposure table provides an overall view of the fund. Net Equity represents - in percentage terms - how much of the fund is invested in the market, netting off long and short positions. The higher the figure, the more the fund will take part in any market rises (or falls). It is important to note that Net Equity can be greater than 100% (for example if the manager is using derivative contracts) and when it is, the portfolio may be described as geared.

The exposure and positioning tables on page 2 break the fund down into a number of different views, each providing a different perspective on the fund's investments.

Administrative & Dealing Information

Financial Year End: 31st March
Reference currency: UK Sterling (GBP)
Company domicile: United Kingdom
Company legal structure: Investment Trust
Capital guarantee: No
ISIN: GB00B62Z3C74
SEDOL: B62Z3C7
Bloomberg: FCSS LN
Distribution frequency: Annual
Charges made to income or capital: 25/75
Other Ongoing Costs (including AMC/excluding Portfolio transaction costs): 0.88%
Portfolio Transaction Costs: 0.54%
Annual Management Charge: 0.85% (net assets) on the first £1.5bn of assets and 0.65% (net) on funds in excess of £1.5bn. +/- 0.20% (based on performance relative to the Market Index)
Last VMF adjustment (+/- 0.2%) applied at month end: -0.20%

How data is calculated and presented

Portfolio composition data has been calculated and presented according to several general principles, which are listed below.

- **Aggregation** : all investments, including derivatives, linked to a particular issuing company have been combined to form a total percentage holding for each company. The aggregate holding is referred to in this factsheet as a position. Where a company is listed in two separate countries, each listing may be classified as a separate issuing company. Exchange Traded Funds (ETFs) and derivatives on ETFs are treated as individual securities - ie not aggregated.
- **Categorisation** : for investments that have underlying securities we use the attributes of the underlying issuing company or common share to determine the appropriate sector, market capitalisation band and geographic area.
- **Derivatives**: all derivatives are included on an exposure basis and, where necessary, are delta-adjusted. Delta-adjusting expresses derivatives in terms of the equivalent number of shares that would be needed to generate the same return.
- **"Basket" securities**: securities that represent a number of company shares - like index futures or options - are allocated to categories (such as country) whenever possible. Otherwise they are included in the "Other Index / Unclassified" category.

ESG Metrics

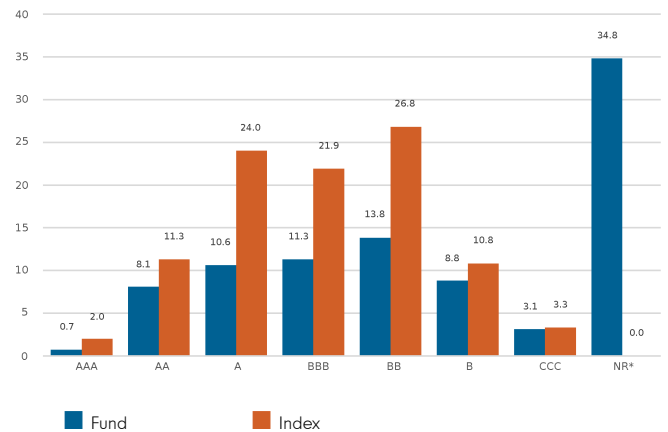
The factsheet is a snapshot of the portfolio at the date indicated above. ESG ratings distribution may vary over time. The portfolio manager may use MSCI ESG ratings or Fidelity ESG ratings as part of investment decisions. Product-specific information can be found on your local Fidelity website which can be accessed via the following link <https://www.fidelityinternational.com> (Products & services) by selecting your country of residence. Representation of this data (including the distribution of MSCI ESG Ratings) is for informational purposes only.

Sustainability Characteristics (30.09.2024)

	Fund	Index
MSCI ESG Fund Rating (AAA-CCC)	N/R	N/R
Weighted Average Carbon Intensity (tCo2e/\$M Revenue)	147.9	208.4
SFDR Classification	N/A	N/A

N/A - Not Applicable
 N/R - Not Rated

MSCI ESG Ratings Distribution % (30.09.2024)



Glossary

MSCI ESG Fund Rating: This shows the fund's ESG rating based on the Quality Scores given to the fund by MSCI. This ranges from AAA, AA (Leader), A, BBB, BB (Average) to B, CCC (Laggard). To be included in MSCI ESG Fund Ratings, 65% of the fund's gross weight must come from covered securities (and excluding cash), the fund's holdings date must be less than one year old and the fund must have at least ten securities.

Weighted Average Carbon Intensity: is calculated as the sum of each portfolio weight multiplied by the Co2e per \$M of Revenue of each holding. This metric provides a snapshot of the fund's exposure to carbon-intensive companies and includes scope 1 and scope 2 carbon emissions. For carbon data, the coverage of underlying securities must be over 50% for data to be shown.

SFDR Classification: Shows the latest available classification given to each fund as part of the EU Sustainable Finance Disclosure Regulation (SFDR). Article 9 funds have sustainable investment as their objective and promote environmental or social characteristics. Article 8 funds promote environmental or social characteristics, but do not have a sustainable investment objective. Article 6 funds integrate sustainability risks (unless specified otherwise in the prospectus) into investment analysis and decision-making, without the funds promoting environmental or social characteristics or having sustainable investments as their objective. Information on sustainability-related aspects is provided pursuant to SFDR at <https://www.fidelity.lu/sfdr>.

MSCI ESG Ratings Distribution: This shows the percentage distribution of ESG ratings in the fund, based on the Net Asset Value of holdings excluding cash, liquidity funds, derivatives and Exchange Traded Funds.

Disclaimer

ESG Rating Source: ©2024 MSCI ESG Research LLC. Reproduced by permission, no further distribution. Although Fidelity International's information providers, including without limitation, MSCI ESG Research LLC and its affiliates (the "ESG Parties"), obtain information from sources they consider reliable, none of the ESG Parties warrants or guarantees the originality, accuracy and/or completeness of any data herein. None of the ESG Parties makes any express or implied warranties of any kind, and the ESG Parties hereby expressly disclaim all warranties of merchantability and fitness for a particular purpose, with respect to any data herein. None of the ESG Parties shall have any liability for any errors or omissions in connection with any data herein. Further, without limiting any of the foregoing, in no event shall any of the ESG Parties have any liability for any direct, indirect, special, punitive, consequential or any other damages (including lost profits) even if notified of the possibility of such damages. The information is as at the date of production based on data provided by MSCI. There may be timing differences between the date at which data is captured and reported. For more up to date information on MSCI ESG Fund Ratings, you can visit <https://www.msci.com/esg-fund-ratings>. For more up to date information on MSCI ESG Ratings, you can visit <https://www.msci.com/sustainable-investing/esg-ratings>.

Carbon Data Source: Data provided by ISS ESG. All rights in the information provided by Institutional Shareholder Services Inc. and its affiliates (ISS) reside with ISS and/or its licensors. ISS makes no express or implied warranties of any kind and shall have no liability for any errors, omissions or interruptions in or in connection with any data provided by ISS. The information is as at the date of production based on carbon data provided by ISS. There may be timing differences between the date at which data is captured and reported.

SFDR Classification is assigned by Fidelity in line with the EU Sustainable Financial Disclosure Regulation.

Glossary / Additional Notes

Equity Exposure notes

GROSS MARKET EXPOSURE

Gross Market Exposure is the total of long exposures, plus the total of short exposures, and less the total of exposures hedging the portfolio, expressed as a percentage of shareholders' funds (Total Net Assets).

NET EQUITY

The net positive exposure to the market with short and hedge positions subtracted from long positions.

OTHER

The value of any non-equity investments (excluding cash funds) expressed as a percentage of TNA.

UNINVESTED CASH

This is 100% minus the fund's Net Equity exposure and minus Other. This leaves any residual cash exposure that is not invested in shares or via derivatives.

Investment Company Facts

NAV

The total value of a company's assets less the total value of its liabilities is its net asset value (NAV). For valuation purposes it is common to divide net assets by the number of shares in issue to give the net assets per share. NAV calculations can include or exclude current financial year income. For the purposes of this factsheet, they are valued with assets including income and costs and with debt valued at the market.

PREMIUM

If the share price of an investment company is higher than the net asset value (NAV) per share, the company is said to be trading at a premium. The premium is shown as a percentage of the NAV.

DISCOUNT

If the share price of an investment company is lower than the net asset value (NAV) per share, the company is said to be trading at a discount. The discount is shown as a percentage of the NAV.

GEARING

Gearing is the Market Exposure figure (either gross or net) expressed in excess of Total Net Assets. It represents the additional exposure to the market above Shareholders' Funds.

FAIR VALUE

The fair value of investments is initially taken to be their cost and is subsequently measured as follows: Listed investments are valued at bid prices, or last market prices, depending on the convention of the exchange on which they are listed, and

Unlisted investments are investments which are not quoted, or are not frequently traded, are stated at the Directors' best estimate of fair value and take account of the cost of the investment, recent arm's length transactions in the same or similar investments and financial performance of the investment since purchase.

General notes

TOTAL NET ASSETS (TNA)

The Company's total assets minus its total liabilities - also known as Shareholders' Funds. It represents the amount by which a company is financed through common and preferred shares.

INDEX

The index used in the positioning tables on page 2 is the index defined in the Performance Comparator section on page 1.

TOP NET LONG POSITIONS

Those companies in which the largest percentages of the trust's total net assets are effectively invested. Positions in other funds - including ETFs (Exchange Traded Funds) - can appear in this table, but index derivatives form part of an "Other Index / Unclassified" category which will not appear.

TOP OVERWEIGHT & UNDERWEIGHT POSITIONS

Those positions which have the largest active weight relative to the index. Positions in other funds - including ETFs (Exchange Traded Funds) - can appear in this table, but index derivatives form part of an "Other Index / Unclassified" category which will not appear. In the underweight table, any short position names have been withheld in line with Fidelity's disclosure policy.

NET LONG POSITIONS CONCENTRATION

Illustrates the weight of the top 10, 20 and 50 positions in the trust and the weight of the top 10, 20 and 50 positions in the index. It does not attempt to show the coincidence of security ownership between fund and index. The sector/industry classification used (i.e. GICS, ICB, TOPIX and IPD) varies by fund. Full descriptions can be found below.

Glossary / Additional Notes

ONGOING COSTS (KID)

These include Portfolio transaction costs (the costs of us buying and selling underlying investments) and Other ongoing costs (the costs that we take each year for managing the investment).

These are based on the methodology prescribed by EU Regulation (PRIIPS) and differ from other presentations of costs such as the Ongoing Charge Figure (OCF) in the Company's Annual Report & Accounts.

PORTFOLIO TRANSACTION COSTS

These are costs incurred when trading underlying investments.

SECTOR INDUSTRY CLASSIFICATION

GICS: Global Industry Classification Standard (GICS) was developed by Standard & Poor's and MSCI Barra. GICS consists of 11 sectors, 24 industry groups, 68 industries and 157 sub-industries.

More information is available at <http://www.standardandpoors.com/indices/gics/en/us>

ICB: The Industry Classification Benchmark (ICB) is an industry classification developed by Dow Jones and FTSE. It is used to segregate markets into sectors within the macroeconomy. The ICB uses a system of 10 industries, partitioned into 20 supersectors, which are further divided into 41 sectors, which then contain 114 subsectors.

More information is available at <http://www.icbenchmark.com/>

Legal Information

Fidelity International refers to the group of companies which form the global investment management organisation that provides information on products and services in designated jurisdictions outside of North America.

Fidelity only offers information on its own products and services and does not provide investment advice based on individual circumstances.

This communication is not directed at, and must not be acted upon by persons inside the United States and is otherwise only directed at persons residing in jurisdictions where the relevant funds are authorised for distribution or where no such authorisation is required.

Unless otherwise stated, all views are those of Fidelity.

Reference in this document to specific securities or funds should not be construed as a recommendation to buy or sell them, but is included for the purposes of illustration only. Investors should also note that the views expressed may no longer be current and may have already been acted upon by Fidelity. The research and analysis used in this documentation is gathered by Fidelity for its use as an investment manager and may have already been acted upon for its own purposes.

Fidelity, Fidelity International, the Fidelity International logo and F symbol are trademarks of FIL Limited.

This fund is managed by FIL Investments International.

Morningstar annualised growth rates, total return, sector median performance and ranks - Data Source - © 2024 Morningstar, Inc. All Rights Reserved. The information contained herein: (1) is proprietary to Morningstar and/or its content providers; (2) may not be copied or distributed; and (3) is not warranted to be accurate, complete or timely. Neither Morningstar nor its content providers are responsible for any damages or losses arising from any use of this information.

Before investing you should read the latest Annual Report and Key Features Document, which are available from www.fidelity.co.uk/its.

Issued by FIL Investment Services (UK) Limited, a firm authorised and regulated in the UK by the Financial Conduct Authority. FIL Investment Services (UK) Limited is registered in England and Wales under the company number 2016555. The registered office of the company is Beech Gate, Millfield Lane, Lower Kingswood, Tadworth, Surrey, KT20 6RP, United Kingdom.