

## Approach and Style

Meeyoung Kim follows a fundamental bottom-up stock selection approach, primarily based on independent proprietary research. Meeyoung favours companies with high quality business models and strong cash flows, as they tend to offer better risk-adjusted returns. Typically, these companies show improving fundamentals that are not reflected in their share price; high quality management; strong free cash flows; and high barriers to entry. When Meeyoung has strong conviction in stocks and sectors from a bottom-up basis, larger overweight positions will follow. Importantly, 'top down', macro-driven decisions will not be the primary driver of portfolio construction.

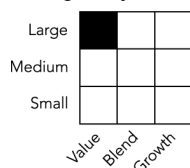
## Objectives & Investment Policy

- Aims to provide long-term capital growth with the level of income expected to be low.
- At least 70% invested in Korean company shares.
- Has the freedom to invest outside the fund's principal geographies, market sectors, industries or asset classes.
- May invest in assets directly or achieve exposure indirectly through other eligible means including derivatives. Can use derivatives with the aim of risk or cost reduction or to generate additional capital or income, including for investment purposes, in line with the fund's risk profile.
- The fund has discretion in its choices of investments within its objectives and policies.
- Income is reinvested in additional shares or paid to shareholders on request.
- Shares can usually be bought and sold each business day of the fund.
- This fund may not be appropriate for investors who plan to sell their shares in the fund within 5 years. Investment in the fund should be regarded as a long-term investment.
- With effect from 24 August 2017 this fund will be closed.

## Independent Assessment

Information in this section is the latest available at date of publication. Further details can be found in the Glossary section of this factsheet. As some ratings agencies may use past performance to produce their assessments, these are not a reliable indicator of future results.

### Morningstar Style Box ®



## Important Information

Before investing you should read the Key Investor Information Document (KIID). Details of where the KIID is available are on the last page of this factsheet. The value of investments and any income from them may go down as well as up and an investor may not get back the amount invested. Where an investor's own currency is different to the currency of the fund's investments, the fund's returns can be affected by fluctuations in currency exchange rates. The use of financial derivative instruments may result in increased gains or losses within the fund. Investments in emerging markets can be more volatile than other, more developed, markets. A lack of liquidity in these markets may make investments more difficult to trade and can affect their price. In some emerging markets, custody may not meet recognised international standards. Liquidity is a measure of how easily an investment can be converted into cash. Under certain market conditions assets may be more difficult to sell.

This information is for Investment Professionals only and should not be relied upon by private investors.

## Fund Facts

Launch date: 23.10.95  
 Portfolio manager: Meeyoung Kim  
 Appointed to fund: 03.11.14  
 Years at Fidelity: 13  
 Fund Size: \$77m  
 Number of positions in fund\*: 33  
 Fund reference currency: US Dollar (USD)  
 Fund domicile: Luxembourg  
 Fund legal structure: SICAV  
 Management company: FIL Investment Management (Luxembourg) S.A.  
 Capital guarantee: No

\*A definition of positions can be found on page 3 of this factsheet in the section titled "How data is calculated and presented."

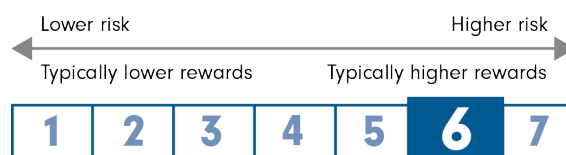
## Share Class Facts

Other share classes may be available. Please refer to the prospectus for more details.

Launch date: 23.10.95  
 NAV price in share class currency: 19.65  
 ISIN: LU0061324488  
 SEDOL: 4553038  
 WKN: 974646  
 Bloomberg: FIDKOR LX  
 Dealing cut-off: 12:00 UK time (normally 13:00 Central European Time)  
 Distribution type: Income  
 Distribution frequency: Annual  
 Ongoing Charges Figure (OCF) per year: 1.95% (Estimated)  
 OCF takes into account annual management charge per year: 1.50%

## Share Class Risk and Reward Profile

This risk indicator is taken from the Key Investor Document (KIID) at the relevant month-end. Because it may be updated during a month, please refer to the KIID for the most up-to-date information.



- The risk category was calculated using historical performance data.
- The risk category may not be a reliable indication of the future risk profile of the fund, is not guaranteed and may change over time.
- The lowest category does not mean a "risk free" investment.
- The risk and reward profile is classified by the level of historical fluctuation of the Net Asset Values of the share class, and within this classification, categories 1-2 indicate a low level of historical fluctuations, 3-5 a medium level and 6-7 a high level.

These figures relate to the fund's past performance, which is not a reliable indicator of future results. The value of investments and any income from them may go down as well as up and an investor may not get back the amount invested.

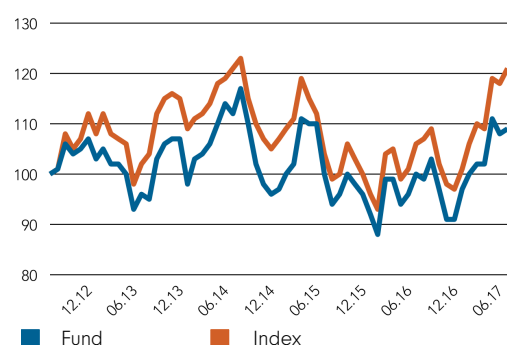
## Performance Comparator(s)

Peer Group Universe Morningstar GIF Equity Korea  
Market index from 01.10.15 KOSPI capped at 8%

Market index is for comparative purposes only unless specifically referenced in the Objectives & Investment Policy on page 1. The same index is used in the positioning tables on this factsheet.

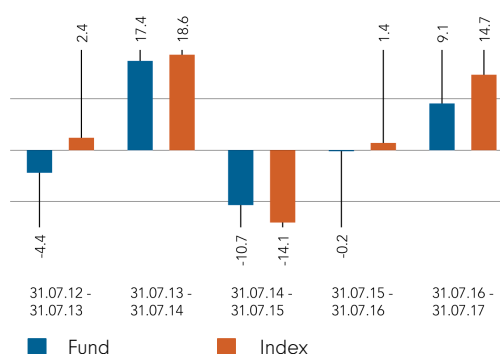
Where the effective date for the current market index is after the share class launch date, full history is available from Fidelity.

## Cumulative performance in USD (rebased to 100)

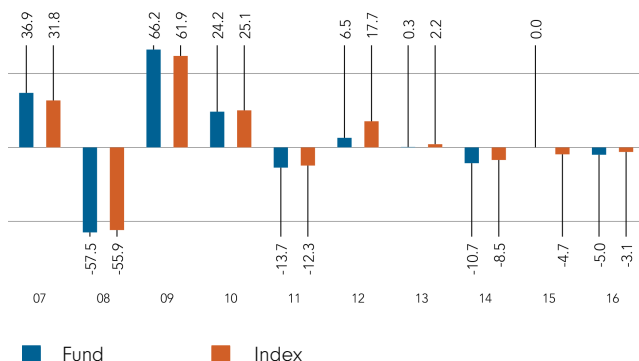


Performance is shown for the last five years (or since launch for funds launched within that period).

## Performance for 12 month periods in USD (%)



## Performance for calendar years in USD (%)



## Volatility & Risk (3 years)

Annualised Volatility: fund (%)	17.10	Annualised Alpha	-0.73
Relative Volatility	1.08	Beta	1.03
Sharpe Ratio: fund	-0.07	Annualised Tracking Error (%)	5.45
		Information Ratio	-0.17
		R <sup>2</sup>	0.90

Calculated using month-end data points. Definitions of these terms can be found in the Glossary section of this factsheet.

## Performance to 31.07.17 in USD (%)

	1m	3m	YTD	1yr	3yr	5yr	Since 06.11.95*
Fund cumulative growth	0.8	7.0	20.0	9.1	-2.8	9.1	97.2
Index cumulative growth	2.5	11.0	25.5	14.7	-0.1	21.3	56.6
Fund annualised growth	-	-	-	9.1	-0.9	1.8	3.2
Index annualised growth	-	-	-	14.7	0.0	3.9	2.1
Ranking within Peer Group Universe							
A-USD	16	14	14	12	8	9	
Total number of funds	18	18	18	18	17	15	
Quartile ranking**	4	3	3	3	2	3	

Source of fund performance and volatility and risk measures is Fidelity. Performance is excluding initial charge.

Basis: nav-nav with income reinvested, in USD, net of fees.

Market indices are sourced from RIMES and other data is sourced from third-party providers such as Morningstar.

\*Performance commencement date.

\*\*Quartile rank refers to performance over time rated on a scale of 1-4. A ranking of 1 indicates that the item being ranked is in the top 25% of the sample and so on. Rankings are based on a performance record that is included in the Peer Group Universe. In line with Investment Association methodology, this record may include a track record extension from a legacy share class and the record may not be the same class of this factsheet.

## Introduction

This factsheet contains information about the composition of the fund at a particular point in time. It aims to help you understand how the fund manager is positioned to achieve the fund's objectives.

The Equity Exposure table below provides an overall view of the fund. This represents - in percentage terms - how much of the fund is invested in the market. The higher the figure, the more the fund will take part in any market rises (or falls).

The definitions section provides a more comprehensive explanation of the individual elements in the table.

The exposure and positioning tables on page 4 break the fund down into a number of different views, each providing a different perspective on the fund's investments.

## How data is calculated and presented

Portfolio composition data has been calculated and presented according to several general principles, which are listed below.

- **Aggregation:** all investments, including derivatives, linked to a particular issuing company have been combined to form a total percentage holding for each company. The aggregate holding is referred to in this factsheet as a position. Where a company is listed in two separate countries, each listing may be classified as a separate issuing company. Exchange Traded Funds (ETFs) and derivatives on ETFs are treated as individual securities - ie not aggregated.

- **Categorisation:** for investments that have underlying securities we use the attributes of the underlying issuing company or common share to determine the appropriate sector, market capitalisation band and geographic area.

- **Derivatives:** all derivatives are included on an exposure basis and, where necessary, are delta-adjusted. Delta-adjusting expresses derivatives in terms of the equivalent number of shares that would be needed to generate the same return.

- **"Basket" securities:** securities that represent a number of company shares - like index futures or options - are allocated to categories (such as country) whenever possible. Otherwise they are included in the "Other Index / Unclassified" category.

## Equity Exposure (% TNA)

	Exposure (% TNA)
Equity	99.0
Other	0.0
Uninvested Cash	1.0

### Definition of terms:

**Equity:** the percentage of the fund that is currently invested in the equity market.

**Other:** the value of any non-equity investments (excluding cash funds) expressed as a percentage of fund TNA.

**Uninvested cash:** this is 100% minus the fund's Equity exposure and minus Other. This leaves any residual cash exposure that is not invested in shares or via derivatives.

**% TNA:** Data is presented as a percentage of TNA, which stands for Total Net Assets (the value of all the fund's assets after the deduction of any liabilities).

## Active Money

Active Money	72.2%
--------------	-------

This is the sum of the fund's overweight positions (including effective cash) when compared to the market index.

## Sector/Industry Exposure (% TNA)

	Fund	Index	Relative
<b>GICS Sector</b>			
Consumer Discretionary	25.4	14.3	11.1
Information Technology	21.0	21.1	-0.1
Financials	14.8	15.8	-1.0
Consumer Staples	13.0	9.2	3.9
Health Care	8.1	4.1	3.9
Industrials	7.6	15.4	-7.8
Materials	4.8	11.1	-6.4
Energy	4.4	3.0	1.4
Telecommunication Services	0.0	3.0	-3.0
Utilities	0.0	2.8	-2.8
Real Estate	0.0	0.2	-0.2
<b>Total Sector Exposure</b>	<b>99.0</b>	<b>100.0</b>	
Other Index / Unclassified	0.0	0.0	
<b>Total Equity Exposure</b>	<b>99.0</b>	<b>100.0</b>	

## Market Capitalisation Exposure (% TNA)

	Fund	Index	Relative
<b>USD</b>			
>10bn	45.5	53.0	-7.5
5-10bn	10.0	13.8	-3.8
1-5bn	29.4	20.7	8.7
0-1bn	14.2	12.5	1.7
<b>Total Market Cap Exposure</b>	<b>99.0</b>	<b>99.9</b>	
Index / Unclassified	0.0	0.1	
<b>Total Equity Exposure</b>	<b>99.0</b>	<b>100.0</b>	

## Country Exposure (% TNA)

	Fund	Index	Relative
Korea (South)	99.0	100.0	-1.0

<b>Total Country Exposure</b>	<b>99.0</b>	<b>100.0</b>
Other Index / Unclassified	0.0	0.0
<b>Total Equity Exposure</b>	<b>99.0</b>	<b>100.0</b>

## Top Positions (% TNA)

	GICS Sector	Country	Fund	Index	Relative
SAMSUNG ELECTRONICS CO LTD	Information Technology	Korea (South)	9.7	8.1	1.6
SK HYNIX INC	Information Technology	Korea (South)	6.4	3.7	2.7
KB FINANCIAL GROUP INC	Financials	Korea (South)	5.3	1.9	3.4
HYUNDAI MOTOR CO	Consumer Discretionary	Korea (South)	5.2	2.5	2.7
SAMSUNG LIFE INSURANCE CO LTD	Financials	Korea (South)	4.8	1.9	2.9
SHINHAN FINANCIAL GROUP CO LTD	Financials	Korea (South)	4.7	2.0	2.7
SK INNOVATION CO LTD	Energy	Korea (South)	4.4	1.3	3.2
SAMSUNG BIOLOGICS CO LTD	Health Care	Korea (South)	4.2	1.4	2.8
MEDY-TOX INC	Health Care	Korea (South)	3.8	0.0	3.8
MANDO CORP	Consumer Discretionary	Korea (South)	3.7	0.2	3.5

## Top Overweight Positions (% TNA)

	Fund	Index	Relative
MEDY-TOX INC	3.8	0.0	3.8
MANDO CORP	3.7	0.2	3.5
GS ENGINEERING & CONSTR CORP	3.5	0.2	3.4
KB FINANCIAL GROUP INC	5.3	1.9	3.4
HANDSOME CO LTD	3.3	0.1	3.3
SK INNOVATION CO LTD	4.4	1.3	3.2
SAMSUNG LIFE INSURANCE CO LTD	4.8	1.9	2.9
SAMSUNG BIOLOGICS CO LTD	4.2	1.4	2.8
SHINHAN FINANCIAL GROUP CO LTD	4.7	2.0	2.7
HYUNDAI MOTOR CO	5.2	2.5	2.7

## Top Underweight Positions (% TNA)

	Fund	Index	Relative
POSCO	0.0	2.2	-2.2
KOREA ELEC POWER CORP	0.0	2.2	-2.2
NAVER CORP	0.0	2.0	-2.0
HYUNDAI MOBIS	0.0	1.9	-1.9
LG CHEMICAL LTD NEW	0.0	1.8	-1.8
SK TELECOM CO LTD	0.0	1.7	-1.7
SK HOLDINGS CO LTD	0.0	1.5	-1.5
AMOREPACIFIC CORP	0.0	1.3	-1.3
SAMSUNG C&T CORP	0.8	2.0	-1.2
KT & G CORP	0.0	1.2	-1.2

## Positions Concentration (% TNA)

	Fund	Index
Top 10	52.2	28.6
Top 20	81.6	43.0
Top 50	99.0	65.4

## Definition of terms:

**Index:** the index used in the positioning tables on this page is the index defined in the Performance Comparator(s) section on page 2 of this factsheet.

**Top Positions:** those companies in which the largest percentages of the fund's total net assets are effectively invested. Positions in other funds - including ETFs (Exchange Traded Funds) - can appear in this table, but index derivatives form part of an "Other Index / Unclassified" category which will not appear.

**Top Overweight & Underweight Positions:** those positions which have the largest active weight relative to the index. Positions in other funds - including ETFs (Exchange Traded Funds) - can appear in this table, but index derivatives form part of an "Other Index / Unclassified" category which will not appear.

**Positions Concentration:** illustrates the weight of the top 10, 20 and 50 positions in the fund and the weight of the top 10, 20 and 50 positions in the index. It does not attempt to show the coincidence of security ownership between fund and index.

The **sector/industry classification** used (ie GICS, ICB, TOPIX or IPD) varies by fund. Full descriptions of GICS, ICB, TOPIX and IPD can be found in the glossary.

## Attribution

Performance attribution is produced in the currency shown below. For funds with multiple share classes, the attribution return reflects the aggregate performance across all the share classes. It may therefore deviate from the published return for a particular share class. When using the analysis for hedged share classes, please consider that the attribution is shown before the impact of hedging.

The contributions shown in the tables are before the impact of charges. If charges are applied, their effect is captured in the "Other" category in the tables and will also be reflected in the fund return.

All investments, including derivatives, linked to a particular issuing company have been combined to form a total percentage for each issuing company.

The sector/industry and country contribution tables (where relevant) display a maximum of eleven individual sectors/industries or countries. For funds investing in more than eleven sectors/industries or countries, only top five and bottom five are listed, with the contribution from other sectors/industries or countries shown in the "Other Sectors" or "Other Countries" category.

Currency of attribution	US Dollar (USD)
One month relative return (%)	-1.53

## Position Contribution (%)

1 month

	Average Relative Weight	Relative Performance Contribution		Average Relative Weight	Relative Performance Contribution
<b>TOP CONTRIBUTORS</b>			<b>TOP DETRACTORS</b>		
SK INNOVATION CO LTD	2.6	0.31	SFA ENGINEERING CORP	2.6	-0.51
HANDSOME CO LTD	3.1	0.29	HYUNDAI MOTOR CO	2.9	-0.35
KOREA ZINC CO LTD	2.8	0.18	JAYJUN COSMETIC CO LTD	1.5	-0.31
LG ELECTRONICS INC NEW	-0.9	0.17	POSCO	-2.1	-0.30
SHINHAN FINANCIAL GROUP CO LTD	2.3	0.16	DUK SAN NEOLUX CO LTD	1.5	-0.24
WONIK IPS CO LTD	1.9	0.16	KOREA AEROSPACE INDUSTRIES LTD	0.9	-0.22
MEDY-TOX INC	3.5	0.16	COSMAX INC	1.9	-0.22
LG DISPLAY CO LTD	-1.0	0.16	LG CHEMICAL LTD NEW	-1.7	-0.20
SAMSUNG LIFE INSURANCE CO LTD	2.3	0.14	AMOREPACIFIC GROUP INC	2.9	-0.20
GS ENGINEERING & CONSTR CORP	3.2	0.11	SAMSUNG BIOLOGICS CO LTD	2.7	-0.20

Positions in other funds - including ETFs (Exchange Traded Funds) - can appear in this table, but index derivatives form part of an "Index / Unclassified" category which will appear in the table(s) below when relevant.

## Sector/Industry Contribution (%)

1 month

### CONTRIBUTIONS TO RELATIVE RETURN

	Average Relative Weight	Security Selection	Sector/ Industry Selection	Total Relative Contribution
<b>GICS SECTOR</b>				
Industrials	-7.2	0.24	-0.01	0.23
Energy	1.0	-0.06	0.14	0.08
Health Care	3.4	0.02	0.02	0.04
Real Estate	-0.2	0.00	-0.01	-0.01
Financials	-2.6	-0.14	0.09	-0.04
Information Technology	-0.4	-0.26	0.18	-0.08
Telecommunication Services	-2.9	0.00	-0.15	-0.15
Utilities	-2.8	0.00	-0.16	-0.16
Consumer Staples	4.2	-0.08	-0.18	-0.26
Consumer Discretionary	11.0	-0.03	-0.46	-0.49
Materials	-5.7	-0.40	-0.29	-0.68
<b>Total Primary Assets</b>	<b>-2.1</b>	<b>-0.70</b>	<b>-0.83</b>	<b>-1.53</b>
Other*	2.1			0.00
<b>TOTAL</b>	<b>0.0</b>			<b>-1.53</b>

\*Other includes portfolio components not already listed such as cash, expenses and other miscellaneous items.

## Glossary / additional notes

## Volatility &amp; Risk

**Annualised volatility:** a measure of how variable returns for a fund or comparative market index have been around their historical average (also known as "standard deviation"). Two funds may produce the same return over a period. The fund whose monthly returns have varied less will have a lower annualised volatility and will be considered to have achieved its returns with less risk. The calculation is the standard deviation of 36 monthly returns presented as an annualised number. Volatility for funds and indices are calculated independently of each other.

**Relative volatility:** a ratio calculated by comparing the annualised volatility of a fund to the annualised volatility of a comparative market index. A value greater than 1 indicates the fund has been more volatile than the index. A value less than 1 shows the fund has been less volatile than the index. A relative volatility of 1.2 means the fund has been 20% more volatile than the index, while a measure of 0.8 would mean the fund has been 20% less volatile than the index.

**Sharpe ratio:** a measure of a fund's risk-adjusted performance, taking into account the return on a risk-free investment. The ratio allows an investor to assess whether the fund is generating adequate returns for the level of risk it is taking. The higher the ratio, the better the risk-adjusted performance has been. If the ratio is negative, the fund has returned less than the risk-free rate. The ratio is calculated by subtracting the risk-free return (such as cash) in the relevant currency from the fund's return, then dividing the result by the fund's volatility. It is calculated using annualised numbers.

**Annualised alpha:** the difference between a fund's expected return (based on its beta) and the fund's actual return. A fund with a positive alpha has delivered more return than would be expected given its beta.

**Beta:** a measure of a fund's sensitivity to market movements (as represented by a market index). The beta of the market is 1.00 by definition. A beta of 1.10 shows that the fund could be expected to perform 10% better than the index in up markets and 10% worse in down markets, assuming all other factors remain constant. Conversely, a beta of 0.85 indicates that the fund could be expected to perform 15% worse than the market return during up markets and 15% better during down markets.

**Annualised tracking error:** a measure showing how closely a fund follows the index to which it is being compared. It is the standard deviation of the fund's excess returns. The higher the fund's tracking error, the higher the variability of fund returns around the market index.

**Information ratio:** a measure of a fund's effectiveness in generating excess return for the level of risk taken. An information ratio of 0.5 shows the fund has delivered an annualised excess return equivalent to half the value of the tracking error. The ratio is calculated by taking the fund's annualised excess return and dividing it by the fund's tracking error.

**R<sup>2</sup>:** a measure representing the degree to which a fund's return can be explained by the returns of a comparative market index. A value of 1 signifies the fund and index are perfectly correlated. A measure of 0.5 means only 50% of the fund's performance can be explained by the index. If the R<sup>2</sup> is 0.5 or lower, the fund's beta (and therefore its alpha too) is not a reliable measure (due to a low correlation between fund and index).

## Ongoing charges

The ongoing charges figure represents the charges taken from the fund over a year. It is calculated at the fund's financial year end and may vary from year to year. For classes of funds with fixed ongoing charges, this may not vary from year to year. For new classes of funds or classes undergoing corporate actions (eg amendment to annual management charge), the ongoing charges figure is estimated until the criteria are met for an actual ongoing charges figure to be published.

The types of charges included in the ongoing charges figure are management fees, administration fees, custodian and depositary fees and transaction charges, shareholder reporting costs, regulatory registration fees, Directors fees (where applicable) and bank charges.

It excludes: performance fees (where applicable); portfolio transaction costs, except in the case of an entry/exit charge paid by the fund when buying or selling units in another collective investment undertaking.

For more information about charges (including details of the fund's financial year end), please consult the charges section in the most recent Prospectus.

## Historic yield

The historic yield for a fund is based on its dividends declared over the preceding 12 months. It is calculated by summing the dividend rates declared in that period, divided by the price as at the date of publication. Declared dividends may not be confirmed and may be subject to change. Where 12 months of declared dividend data does not exist a historic yield will not be published.

## Sector/industry classification

**GICS:** Global Industry Classification Standard (GICS) was developed by Standard & Poor's and MSCI Barra. GICS consists of 11 sectors, 24 industry groups, 68 industries and 157 sub-industries. More information is available at <http://www.standardandpoors.com/indices/gics/en/us>

**ICB:** The Industry Classification Benchmark (ICB) is an industry classification developed by Dow Jones and FTSE. It is used to segregate markets into sectors within the macroeconomy. The ICB uses a system of 10 industries, partitioned into 19 supersectors, which are further divided into 41 sectors, which then contain 114 subsectors. More information is available at <http://www.icbenchmark.com/>

**TOPIX:** Tokyo stock Price Index, commonly known as TOPIX, is a stock market index for the Tokyo Stock Exchange (TSE) in Japan, tracking all domestic companies of the exchange's First Section. It is calculated and published by the TSE.

**IPD** means the Investment Property Databank who are a provider of performance analysis and benchmarking services for investors in real estate. IPD UK Pooled Property Funds Index - All Balanced Funds is a component of the IPD Pooled Funds Indices which is published quarterly by IPD.

## Independent Assessment

**Scope Fund Rating:** The rating measures how well a fund has balanced risk and reward relative to its peers. The rating is based solely on performance for funds with a five year track record. Funds with a shorter history also undergo qualitative assessment. For example, this may include looking at management style. The rating scale is A = very good, B = good, C = average, D = below average and E = poor.

**Morningstar Star Rating for Funds:** The rating measures how well a fund has balanced risk and reward relative to its peers. Star ratings are strictly based on past performance and Morningstar suggests investors use them to identify funds that are worthy for further research. The top 10% of funds in a category will receive a 5-star rating and the next 22.5% receive a 4-star rating. Only ratings of 4 or 5 stars are displayed on the factsheet.

**Morningstar Style Box:** The Morningstar Style Box is a nine-square grid that provides a graphical representation of the investment style of funds. It is based on fund holdings and classifies funds according to market capitalisation (the vertical axis) and growth and value factors (the horizontal axis). The value and growth factors are based on measures such as earnings, cashflow and dividend yield and use both historical and forward-looking data.



## Important Information

Fidelity International refers to the group of companies which form the global investment management organisation that provides information on products and services in designated jurisdictions outside of North America.

Fidelity only offers information on its own products and services and does not provide investment advice based on individual circumstances, other than when specifically stipulated by an appropriately authorised firm, in a formal communication with the client.

This communication is not directed at, and must not be acted upon by persons inside the United States and is otherwise only directed at persons residing in jurisdictions where the relevant funds are authorised for distribution or where no such authorisation is required.

Unless otherwise stated, all views are those of Fidelity.

Reference in this document to specific securities or funds should not be construed as a recommendation to buy or sell them, but is included for the purposes of illustration only. Investors should also note that the views expressed may no longer be current and may have already been acted upon by Fidelity. The research and analysis used in this documentation is gathered by Fidelity for its use as an investment manager and may have already been acted upon for its own purposes.

Past performance is not a reliable indicator of future results. The value of investments can go down as well as up and you may get back less than you invested.

Fidelity, Fidelity International, the Fidelity International logo and F symbol are trademarks of FIL Limited.

This fund is managed by FIL Investment Management (Luxembourg) S.A.

This document describes a sub-fund and share class of the UCITS. The Prospectus and Reports and Accounts are prepared for the entire UCITS.

Morningstar annualised growth rates, total return, sector median performance and ranks - Data Source - © 2017 Morningstar, Inc. All Rights Reserved. The information contained herein: (1) is proprietary to Morningstar and/or its content providers; (2) may not be copied or distributed; and (3) is not warranted to be accurate, complete or timely. Neither Morningstar nor its content providers are responsible for any damages or losses arising from any use of this information.

Before investing you should read the Key Investor Information Document (KIID), which is available in your local language through the website [www.fidelityinternational.com](http://www.fidelityinternational.com) or from your distributor.

**Austria:** Investments should be made on the basis of the current prospectus/Key Investor Information Document (KIID), which is available along with the current annual and semi-annual reports free of charge from our European Service Centre in Luxembourg, FIL (Luxembourg) S.A. 2a, rue Albert Borschette BP 2174 L-1021 Luxembourg as well as with the Austrian paying agent UniCredit Bank Austria AG, Schottengasse 6-8, 1010 Wien, FIL (Luxembourg) S.A. - Zweigniederlassung Wien, Mariahilfer Strasse 36, 1070 Wien or [www.fidelity.at](http://www.fidelity.at). Issued by FIL (Luxembourg) S.A.

**Denmark:** Investments should be made on the basis of the current prospectus/Key Investor Information Document (KIID), which is available in your local language along with the current annual and semi-annual reports free of charge from your financial advisor or from the branch of your bank or from [www.fidelity.dk](http://www.fidelity.dk). Issued by FIL (Luxembourg) S.A.

**Finland:** Investments should be made on the basis of the current prospectus/Key Investor Information Document (KIID), which is available along with the current annual and semi-annual reports free of charge from your financial advisor or from the branch of your bank and from [www.fidelity.fi](http://www.fidelity.fi). Issued by FIL (Luxembourg) S.A.

**France:** Investments should be made on the basis of the current prospectus/Key Investor Information Document (KIID), which is available along with the current annual and semi-annual reports free of charge from your financial advisor or from the branch of your bank or visit the Fidelity website. Issued by FIL Gestion, a portfolio management company approved by the AMF under the number GP03-004, 29 rue de Berri, 75008 Paris.

**Germany:** Investments should be made on the basis of the current prospectus/Key Investor Information Document (KIID), which is available along with the current annual and semi-annual reports free of charge from FIL Investment Services GmbH, Postfach 200237, 60606 Frankfurt/Main or [www.fidelity.de](http://www.fidelity.de). Issued by FIL Investment Services GmbH.

**Iceland:** Investments should be made on the basis of the current prospectus/Key Investor Information Document (KIID), which is available along with the current annual and semi-annual reports free of charge from your financial advisor or from the branch of your bank. Issued by FIL (Luxembourg) S.A.

**Italy:** Investments should be made on the basis of the current prospectus/Key Investor Information Document (KIID), which is available along with the current annual and semi-annual reports free of charge from your financial advisor or from the branch of your bank. Issued by FIL (Luxembourg) S.A.

**Luxembourg:** Investments should be made on the basis of the current prospectus/Key Investor Information Document (KIID), which is available along with the current annual and semi-annual reports free of charge from our distributors or [www.fidelity.lu](http://www.fidelity.lu). Issued by FIL (Luxembourg) S.A.

**Malta:** Investments should be made on the basis of the current prospectus/Key Investor Information Document (KIID), which is available along with the current annual and semi-annual reports free of charge from Growth Investments Limited (which is licensed by the MFSA). Fidelity Funds are promoted in Malta by Growth Investments Ltd in terms of the EU UCITS Directive and Legal Notices 207 and 309 of 2004. The Funds are regulated in Luxembourg by the Commission de Surveillance du Secteur Financier. Issued by FIL (Luxembourg) S.A.

**Netherlands:** Investments should be made on the basis of the current prospectus/Key Investor Information Document (KIID), which is available along with the current annual and semi-annual reports free of charge from FIL (Luxembourg) S.A., Netherlands Branch (registered with the AFM), World Trade Centre, Tower H, 6th Floor, Zuidplein 52, 1077 XV Amsterdam (tel. 0031 20 79 77 100) or from [www.fidelity.nl](http://www.fidelity.nl). Fidelity Funds is authorised to offer participation rights in The Netherlands pursuant to article 2:66 (3) in conjunction with article 2:71 and 2:72 Financial Supervision Act. Issued by FIL (Luxembourg) S.A.

**Norway:** Investments should be made on the basis of the current prospectus/Key Investor Information Document (KIID), which is available along with the current annual and semi-annual reports free of charge from your financial advisor or from the branch of your bank or from [www.fidelity.no](http://www.fidelity.no). Issued by FIL (Luxembourg) S.A.

**Poland:** Before taking any investment decision you should obtain detailed information. Investments should be made on the basis of the current prospectus, the Key Investor Information Document and the Additional Information for Investors, which is available along with the current annual and semi-annual reports free of charge from our distributors, from our European Service Centre in Luxembourg on the website [www.fidelity.pl](http://www.fidelity.pl) and from Fidelity Funds representative office in Poland. Issued by FIL (Luxembourg) S.A.

**Portugal:** Investments should be made on the basis of the current prospectus/Key Investor Information Document (KIID), which is available along with the current annual and semi-annual reports free of charge. Fidelity Funds is registered with the CMVM and the legal documents can be obtained from locally authorised distributors. Issued by FIL (Luxembourg) S.A.

**Spain:** Investments should be made on the basis of the current prospectus/Key Investor Information Document (KIID), which is available along with the current annual and semi-annual reports free of charge. For the purposes of distribution in Spain, Fidelity Funds is registered with the CNMV Register of Foreign Collective Investment Schemes under registration number 124, where complete information is available from Fidelity Funds authorised distributors. The purchase of or subscription for shares in Fidelity Funds shall be made on the basis of the KIID that investors shall receive in advance. The KIID is available for inspection at the offices of locally authorised distributors as well as at the CNMV. Issued by FIL (Luxembourg) S.A.

**Sweden:** Investments should be made on the basis of the current prospectus/Key Investor Information Document (KIID), which is available along with the current annual and semi-annual reports free of charge from your financial advisor or from the branch of your bank, from our European Service Centre in Luxembourg, FIL (Luxembourg) S.A. 2a, rue Albert Borschette BP 2174 L-1021 Luxembourg or from [www.fidelity.se](http://www.fidelity.se). Issued by FIL (Luxembourg) S.A.

**Switzerland:** Investments should be made on the basis of the current prospectus and KIID (key investor information document), which are available along with the current annual and semi-annual reports free of charge from our distributors, from FIL Luxembourg S.A. and from our legal representative and paying agent in Switzerland: BNP Paribas Securities Services, Paris, succursale de Zurich, Selnaustrasse 16, 8002 Zurich. Issued by FIL Investment Switzerland AG authorised and regulated in Switzerland by the Swiss Financial Market Supervisory Authority FINMA.

**United Kingdom:** Investments should be made on the basis of the KIID (key investor information document) which is available at [www.fidelity.co.uk/importantinformation](http://www.fidelity.co.uk/importantinformation). The full prospectus may also be obtained from Fidelity. Please note that not all funds in the SICAV fund range are suitable for UK investors and tax advice should be sought before investing. Fidelity Funds is recognised under section 264 of the Financial Services and Markets Act 2000. Investors should note that loss caused by such recognised funds will not be covered by the provisions of the Financial Services Compensation Scheme (or by any similar scheme in Luxembourg) if the fund is unable to meet its obligations, however claims for loss in regards to such recognised funds against a Financial Conduct Authority authorised firm such as Fidelity will be. The UK distributor of Fidelity Funds is Fidelity International. Issued by FIL Investments International, a firm authorised and regulated in the UK by the Financial Conduct Authority. FIL Investments International is registered in England and Wales under the company number 1448245. The registered office of the company is Oakhill House, 130 Tonbridge Road, Hildenborough, Tonbridge, Kent TN11 9DZ, United Kingdom.

The performance figures shown do not take into account the fund's Initial Charge. If you took an initial charge of 5.25% from an investment, this is the equivalent of reducing a growth rate of 6% per annum over 5 years to 4.9%. This is the highest initial charge applicable, if the initial charge you pay is less than 5.25%, the impact on the overall performance will be less.

CSO4925 CL1305901/NA English 44022 T1a