

1	2	3	4	5	6	7
---	---	---	---	---	---	---

CSIF (Lux) Government Bonds EUR

Class FB EUR

Investment policy

The fund is managed with a "passive" approach and is distinguished by its broad diversification, minimal tracking error and cost-effective management. The aim of the fund is to track the reference index as closely as possible and to minimize performance deviations from the benchmark.

Fund facts

Fund manager	Credit Suisse AG, Index Solutions Team
Fund manager since	16.11.2015
Location	Zurich
Fund domicile	Luxembourg
Fund currency	EUR
Close of financial year	31. Dec
Total net assets (in millions)	714.31
Inception date	17.06.2016
All-in Fee in % p.a.	0.20
Subscription spread (remains within the fund) in %	0.10
Redemption spread (remains within the fund) in %	0.00
Subscription / Redemption Cut-Off	14:00/14:00
Benchmark (BM)	CGBI WGBI EMU All Mats.
Benchmark (BM) Bloomberg Ticker	SBEGEU
Unit Class	Category FB (capital growth)
Unit class currency	EUR
ISIN number	LU1419778060
Bloomberg ticker	CSIGFBE LX
Net Asset Value	102.33
EU taxation	In scope - tax

Duration and Yield

	Fund	Benchmark
Gross portfolio yield in %	0.15	0.16
Average remaining term to maturity in years	9.39	9.46
Modified duration in years	7.76	7.83

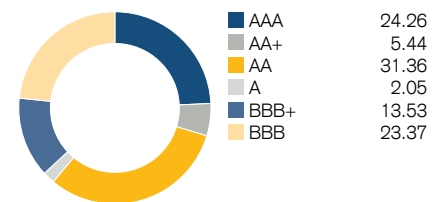
Net performance in EUR (rebased to 100) ²⁾

According to MiFID standards (Markets in Financial Instruments Directive) no performance figures shall be made available to private investors if the product was launched less than twelve months ago.

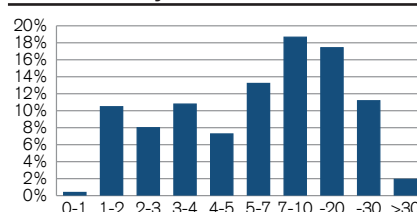
Currencies in %



Credit Ratings in %



Maturities in years



Number of holdings

Fund	270
Benchmark	286

Top 10 holdings in %

Position	Maturity	as % of assets
France	25.10.23	1.03
Germany	04.01.18	1.02
Germany	15.02.25	0.98
France OAT	25.11.19	0.95
France	25.10.32	0.92
France	25.04.20	0.82
France	25.10.27	0.81
France OAT	25.04.18	0.80
Government of Italy	01.05.31	0.80
France	25.04.22	0.80
Total		8.94

¹⁾ The calculation of the risk indicator is based on the CESR/10-673 Directive. The risk indicator is based on historic and partly simulated data; it cannot be used to predict future developments. The classification of the fund may change in future and does not represent a guarantee. A classification into category 1 is not a risk-free investment either.

²⁾ Historical performance indications and financial market scenarios are not a guarantee for current or future performance. Performance indications do not consider commissions levied at subscription and/or redemption.

Contact

CREDIT SUISSE AG
Asset Management
Index Solutions
+41 (0)44 334 41 41/+41 (0)44 332 32 00
index.solutions@credit-suisse.com

This document has been prepared by Credit Suisse AG and/or one of its affiliates (hereafter "CS") with the greatest of care and to the best of its knowledge and belief. However, CS provides no guarantee with regard to its content and completeness, and does not accept any liability for losses which might arise from making use of this information. The opinions expressed in this document are those of CS at the time of writing and are subject to change at any time without notice. Unless stated otherwise, all figures are unaudited. This document is provided for information purposes only and is for the exclusive use of the recipient. It does not constitute an offer or recommendation to buy or sell financial instruments or banking services and does not release the recipient from exercising his/her own judgment. In particular, the recipient is advised to check that the information provided is in line with his/her own circumstances with regard to any legal, regulatory, tax or other consequence, with the help of a professional advisor if necessary. This document may not be reproduced in part or in full without the written permission of CS. Neither this document nor any copy thereof may be sent, taken into or distributed in the United States or to any US person (within the meaning of Regulation S of the US Securities Act of 1993 in its current form). It is not intended for persons who, due to their nationality or place of residence, are not permitted access to such information under local law. Every investment involves risk, especially with regard to fluctuations in value and return. Investments in foreign currencies entail the additional risk that the foreign currency might lose value against the investor's reference currency. Neither historical nor future performance indications and financial market scenarios are guarantee for current or future performance. Performance indicators do not take account of commissions levied at subscription and/or redemption. Furthermore, no guarantee can be given that the benchmark performance will be reached or exceeded. In connection with the transactions in the products or services mentioned herein, Credit Suisse AG may pay to or receive from third parties one-time or recurring remunerations as part of its compensation. You may request further information from your financial advisor. Potential conflicts of interest cannot be excluded. This document qualifies as marketing material that has been published for advertising purposes. It should not be read as an independent financial or investment analysis. It does not constitute financial advising or any other regulated financial service. The investment funds' mentioned in this publication have been established under Luxembourg law as undertakings for collective investment in transferable securities (UCITS) and are subject to EU Directive 2009/65/EC, as amended. Subscriptions will only be valid on the basis of the current sales prospectus, simplified prospectus or key investor information document (if any) and the most recent annual report (or semi-annual report, if the latter is more recent), the latest financial report published and the fund's annual trading report in Spain registered with the National Securities Market Commission. These, along with the rest of the fund's instruments of incorporation, may be obtained free of charge from Credit Suisse AG, Spain, at its registered office at Calle Ayala 42, 28001 Madrid, Spain. Investors should carefully read and analyze the content of the aforementioned documents and should seek professional advising if necessary prior to making any investment in this product. This material is distributed in Spain by Credit Suisse AG, Spain, an entity registered with the National Securities Market Commission as a fund distributor.

Copyright © 2016 Credit Suisse Group AG and/or its affiliates. All rights reserved.