

## KEY INVESTOR INFORMATION

This document provides you with key investor information about this Sub-Fund. It is not marketing material. The information is required by law to help you understand the nature and the risks of investing in this Sub-Fund. You are advised to read it so you can make an informed decision about whether to invest.

## LO Funds - CAT Bonds, (USD), NA

(the "Sub-Fund") a Sub-Fund of Lombard Odier Funds (the "SICAV")

Category N, Class accumulated, Currency USD, ISIN LU1349271608 (the "Class")

This Sub-Fund is managed by Lombard Odier Funds (Europe) S.A., part of Lombard Odier Group

### Objectives and Investment Policy

#### Objectives and Investment Policy

The Sub-Fund is actively managed. The Sub-Fund is not managed in reference to an index.

The Sub-Fund's objective is to generate returns by investing across a diversified selection of catastrophe bonds "CAT Bonds"). The Sub-Fund seeks to achieve a low correlation to traditional asset classes such as bonds and equities.

CAT Bonds are financial securities that transfer insurance risk to the capital markets. The investor in such securities receives a coupon made up of a floating money market component and an insurance premium. The premium compensates the investor for bearing the risk of a partial or total loss of nominal value and interest resulting from the occurrence of

extraordinary predefined events such as, but not limited to, an earthquake or a hurricane.

The Sub-Fund does not invest in instruments linked to life settlements.

Financial derivative instruments are only used for hedging and efficient portfolio management purposes.

#### Information

- Recommendation: This Sub-Fund may not be appropriate for investors who plan to withdraw their money within 5 years.

- Dealing frequency: You may redeem shares in this Sub-Fund on demand on a weekly basis.

- The Sub-Fund is denominated in USD. This Class is in USD.

- Distribution policy: Income accumulated.

### Risk and Reward Profile

Lower risk		Higher risk				
←		→				
Potentially lower rewards			Potentially higher rewards			
1	2	3	4	5	6	7

#### What does it mean?

This indicator (SRRI) represents the annualized historical volatility of the Sub-Fund over a 5-year period. Where there are less than 5 years worth of data, missing returns are simulated using an appropriate benchmark. The SRRI may change over time and should not be used as an indicator of future risk or returns. Even the lowest risk classification does not imply that the Sub-Fund is risk-free or that capital is necessarily guaranteed or protected.

#### Category

The Sub-Fund invests in CAT Bonds, but does not invest in financial derivative instruments as part of the investment strategy.

#### Are there any other particular risks?

The following risks may be materially relevant but may not always be adequately captured by the synthetic risk indicator and may cause additional loss:

- If a predefined loss event occurs, the investment amount is not repaid in full at maturity. An event can lead to delayed payments, a partial or even total default of the investment amount. The strategy is subject to the risk of insured events, which are in each case based on the probability of occurrence and claim amounts of insured events.

- Model risk arises if the probabilities of occurrence and claim amounts of the covered event are not properly reflected in the model. The event probability of CAT Bonds is based on risk models. These are constantly being revised and developed, but they only represent an approximation of reality. These models may be subject to uncertainty and errors. Consequently, event risks can be significantly under- or overestimated. Price risk is related to model risk to the extent that the value of CAT Bonds relies on the assessment of fundamentally unpredictable events whose probability the models seek to approximate.

- The proceeds of CAT Bond transactions are typically invested in money market funds or similar instruments backed by a government, governmental and/or supranational entity. Investors are exposed to the counterparty risk of these entities and, upon their potential default, to the market risk of the assets held as collateral.

For more details about risk, see appendix B "Risk Factors" of the prospectus.

### Charges

One-off charges taken before or after you invest	
Entry charge	Up to 5.00%
Exit charge	0.00%
This is the maximum that might be taken out of your money before it is invested and before the proceeds of your investment are paid out.	
Charges taken from the Class over a year	
Ongoing charge	1.15%
Charges taken from the Class under certain specific conditions	
Performance fee	None

The charges you pay are used to pay the costs of running the Sub-Fund, including the costs of marketing and distributing it.

These charges reduce the potential growth of your investment.

The entry and exit charges shown are maximum figures. In case of a

switch between sub-funds, a maximum charge of 0.50% of the value of the shares being switched will apply.

In some cases you might pay less – you can find this out from your financial adviser or distributor.

The ongoing charges figure is based on expenses for the 12-month period ending on the date of this document. This figure may vary from year to year.

For more information about charges, see "Charges and Expenses" in section 10 of the prospectus and the relevant Sub-Fund's Appendix. The prospectus is available at [www.loim.com](http://www.loim.com).

## Past Performances

### Performance Disclaimer

Please be aware that past performance is not a reliable indicator of future results.

The performance chart shows the class's investment returns. These returns are percentage changes in the Sub-Fund's net asset value between the end of one year and the end of the following year in the currency of the Class.

### Charges and Fees

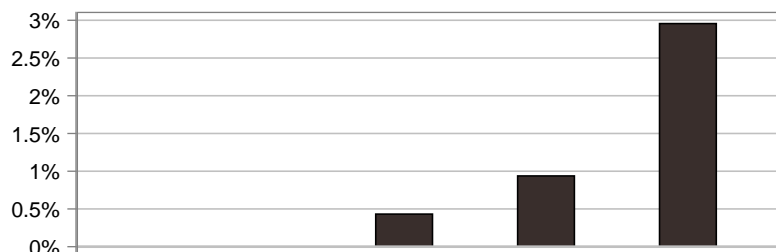
The fees for the ongoing Sub-Fund charges are included in the calculation of past performance. The entry/exit fees are excluded from the calculation of past performance.

### Launch Date and Currency

Sub-Fund's launch date: February 16, 2016.

The reference currency of the Sub-Fund is USD.

Past performance was calculated in USD.



	2015	2016	2017	2018	2019
■ LO Funds - CAT Bonds, (USD), NA			0.4%	0.9%	3.0%

## Practical Information

### Depository

The depository is CACEIS Bank, Luxembourg Branch.

### Price Publication

The net asset value per share is calculated weekly and is available on [www.loim.com](http://www.loim.com) and at the registered office of the SICAV.

### Further Information

You can find information about the SICAV, its sub-funds and the available share classes online at [www.loim.com](http://www.loim.com). This includes information on how to buy or sell shares or switch between the SICAV's various sub-funds. The Prospectus and annual and semi-annual reports for the SICAV and the details of the up-to-date remuneration policy of Lombard Odier Funds (Europe) S.A. can be obtained free of charge from the website [www.loim.com](http://www.loim.com) and from the SICAV's registered office, at 291, route d'Arlon, L-1150 Luxembourg. These documents are available in English, French and Italian.

The assets and liabilities of the Sub-Fund are segregated from the assets and liabilities of the other sub-funds of the SICAV. Third party

creditors will not have recourse to the assets of the Sub-Fund.

### Tax Legislation

The Sub-Fund is subject to the tax laws and regulations of Luxembourg. Depending on your own country of residence, this might have an impact on your investment. For further details you should consult a tax adviser.

### Liability Document

The SICAV may be held liable solely on the basis of any statement contained in this document that is misleading, inaccurate or inconsistent with the relevant parts of the Prospectus for the SICAV.

### Switch between Sub-Funds

Provided investors meet the conditions set forth in the prospectus, they are entitled to exchange their shares in this Sub-Fund with either shares of another class of this Sub-Fund or shares of another sub-fund of the SICAV.

For more information about switch of shares, see section 14 "Conversion of Shares" of the prospectus. The prospectus is available at [www.loim.com](http://www.loim.com).

This Sub-Fund is authorised in Luxembourg and regulated by the Commission de Surveillance du Secteur Financier.

Lombard Odier Funds (Europe) S.A. is authorised in Luxembourg and regulated by Commission de Surveillance du Secteur Financier.

This key investor information is accurate as at December 21, 2020.