

Risk profile (SRRI) ¹⁾

| | | | | | | |
|---|---|---|---|---|---|---|
| 1 | 2 | 3 | 4 | 5 | 6 | 7 |
|---|---|---|---|---|---|---|

CS (Lux) Multimanager Enhanced Fixed Income USD Fund

a subfund of CS Investment Funds 4 - Class UB USD

Investment policy

Investment objective is to achieve the highest possible return in USD by investing worldwide in a diversified fixed income fund portfolio with exposure to government bonds, corporates, emerging markets, High Yield, ABS, Inflation Linked Bonds and Convertibles.

Fund facts

| | |
|--|---|
| Fund manager | Credit Suisse Asset Management (Schweiz) AG |
| Fund manager since | 27.03.2017 |
| Location | Zurich |
| Fund domicile | Luxembourg |
| Fund currency | USD |
| Close of financial year | 30. Nov |
| Total net assets (in millions) | 414.86 |
| Inception date | 26.02.2015 |
| Management fee in % p.a. | 0.70 |
| TER (as of 30.11.2017) in % | 1.53 |
| Swinging single pricing (SSP) ³⁾ | Yes |
| Unit Class | Category UB |
| | (capital growth) |
| Unit class currency | USD |
| ISIN number | LU1144420202 |
| Bloomberg ticker | CMFUUBU LX |
| Net Asset Value | 110.11 |
| Redemptions | Daily |

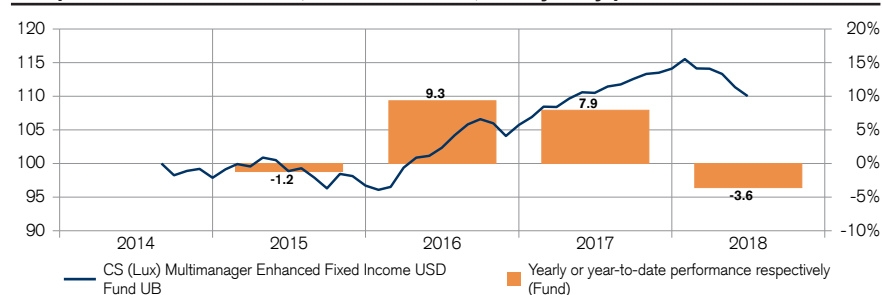
3) For more details, please refer to the relevant chapter "Net Asset Value" of the Fund's prospectus.

Fund Statistics

| | 1 year | 3 years |
|--------------------------------------|--------|---------|
| Annualized volatility in % | 3.30 | 4.12 |
| Maximum draw down in % ⁴⁾ | -4.77 | -4.77 |

4) Maximum drawdown is the most negative cumulative return over a given time period.

Net performance in USD (rebased to 100) and yearly performance ²⁾

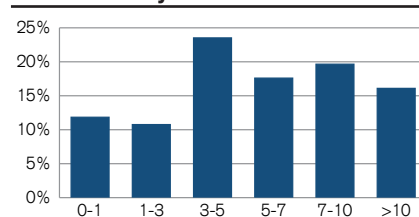


The document reflects performance of the shareclass CS (Lux) Multimanager Enhanced Fixed Income USD Fund UB extended with track record of already existing, equivalent by distribution type and valuation currency retail shareclass.

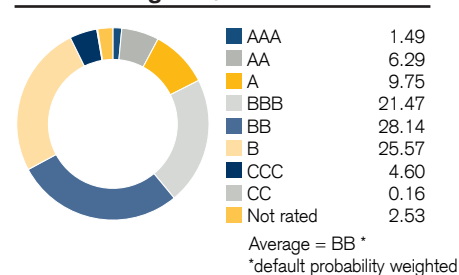
Net performance in USD ²⁾

| | 1 month | 3 months | YTD | 1 year | 3 years | 5 years |
|------|---------|----------|-------|--------|---------|---------|
| Fund | -1.18 | -3.57 | -3.58 | -0.43 | 11.28 | - |

Maturities in years



Credit Ratings in %



Currencies in %

| | |
|-----|-------|
| USD | 90.59 |
| EUR | 9.41 |

Duration

| | |
|-------------------|------|
| Modified Duration | 4.46 |
|-------------------|------|

Asset Allocation in %

| | |
|-----------------------|---------------|
| Emerging Market Bonds | 50.14 |
| High Yield Bonds | 45.73 |
| Cash/Cash Equivalents | 4.13 |
| Total | 100.00 |

¹⁾ The calculation of the risk indicator is based on the CESR/10-673 Directive. The risk indicator is based on historic and partly simulated data; it cannot be used to predict future developments. The classification of the Fund may change in future and does not represent a guarantee. A classification into category 1 is not a risk-free investment either.

²⁾ Historical performance indications and financial market scenarios are not reliable indicators of future performance. The performance data do not take into account the commissions and costs incurred on the issue and redemption of fund units.

Contact

CREDIT SUISSE AG
Sucursal en España
Calle Ayala 42
28001 Madrid/Spain
Tel +34 91 791 60 00 Fax +34 91 791 60 10

The information provided herein constitutes marketing material. It is not investment advice or otherwise based on a consideration of the personal circumstances of the addressee nor is it the result of objective or independent research. The information provided herein is not legally binding and it does not constitute an offer or invitation to enter into any type of financial transaction.

The information provided herein was produced by Credit Suisse Group AG and/or its affiliates (hereafter "CS") with the greatest of care and to the best of its knowledge and belief.

The information and views expressed herein are those of CS at the time of writing and are subject to change at any time without notice. They are derived from sources believed to be reliable.

CS provides no guarantee with regard to the content and completeness of the information and does not accept any liability for losses that might arise from making use of the information. If nothing is indicated to the contrary, all figures are unaudited. The information provided herein is for the exclusive use of the recipient.

Neither this information nor any copy thereof may be sent, taken into or distributed in the United States or to any U. S. person (within the meaning of Regulation S under the US Securities Act of 1933, as amended).

It may not be reproduced, neither in part nor in full, without the written permission of CS.

Investment principal on bonds can be eroded depending on sale price, market price or changes in redemption amounts. Care is required when investing in such instruments.

CS (Lux) Multimanager Enhanced Fixed Income USD Fund UB: This fund is domiciled in Luxembourg. The representative in Switzerland is Credit Suisse Funds AG, Zurich. The paying agent in Switzerland is Credit Suisse (Schweiz) AG, Zurich. The prospectus, the simplified prospectus and/or the Key Investor Information Document (KIID) and the annual and half-yearly reports may be obtained free of charge from the representative or from any branch of Credit Suisse AG in Switzerland.

Important information for investors in Spain

The fund CS (Lux) Multimanager Enhanced Fixed Income USD Fund UB is registered at the Comisión Nacional del Mercado de Valores for distribution in Spain by registered distributors. The prospectus, the key investor information document or the document replacing it in the home country of the fund, the management regulations or bylaws and the annual and/or semi-annual reports are available free of charge from registered distributors, such as Credit Suisse International, Sucursal en España and/or Credit Suisse AG, Sucursal en España, with registered office at calle Ayala 42, 28001 Madrid, España. Investors should carefully read and analyze the mentioned documents, if necessary with the help of a professional advisor. In Spain, this material is distributed by CS AG, Sucursal en España.

Copyright © 2018 Credit Suisse Group AG and/or its affiliates. All rights reserved.