

DPAM L Patrimonial Dynamic Fund - B

Institutional Factsheet | 28 February 2019

Morningstar ★★ ★ (*)

OVERVIEW

Asset Class	Multi Assets
Category	Flexible
Strategy	Active Strategy
Fund Of	DPAM L
Legal Structure	SICAV
Domicile	Luxembourg
Reference Currency	EUR
Liquidity	Daily
Sub-fund launch	19.08.2014
First NAV date	31.08.2014
Countries notified for public sale	AT, BE, CH, DE, ES, FR, IT, LU
ISIN	LU1090894277
Entry Fee	Maximum 2%
Exit Fee	0%
Ongoing charges*	1.70%
<i>*included management fee</i>	1.00%
Performance fee	10.00%
Minimum investment	0.001 share
NAV (Capitalisation)	113.02
Assets (all classes)	mn EUR 4.37

PERFORMANCES (%)

1 month	0.92
YTD	5.50
1 year	1.82
3 years annualised	2.21
5 years annualised	-
10 years annualised	-

PORTFOLIO CHARACTERISTICS

Bond Part	
Modified Duration (%)	5.82
Yield to Worst (%)	1.71

INVESTMENT UNIVERSE

The sub-fund invests principally in capital securities, debt securities - including convertible bonds or inflation-linked bonds with investment grade or high yield ratings, money market instruments and/or UCI (such UCI may include UCITS, ETF and/or other UCI provided, in the case of ETF and other UCI, the conditions of article 41 (1) e) of the Law of 2010 are met. Subject to investing in capital securities, in which the sub-fund may invest a maximum of 80% of its net assets, investments will be in variable proportions, without any limits other than those stated above and the legal and/or regulatory limits applicable.

BREAKDOWNS (%)

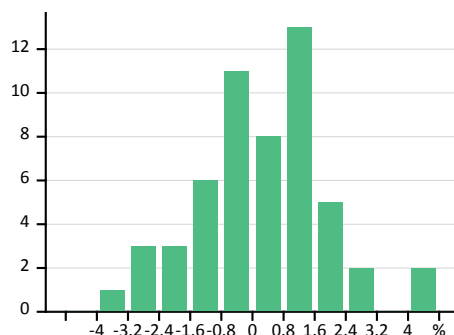
Asset Allocation		Currencies	
Cash	16.1	Euro	39.1
Bonds	31.9	US Dollar	21.9
Bond Derivatives	8.4	Japanese yen	9.6
Equity	43.2	Pound sterling	3.3
Equity Derivatives	9.8	Swiss franc	2.6
Other	8.0	Canadian dollar	1.9
		Other	21.6
Sectors - Equity Part		Ratings - Bond Part	
Information Technology	8.5	AAA	1.7
Industrials	8.2	AA+	1.5
Financials	7.1	A	2.6
Consumer Discretionary	5.1	A-	6.0
Health Care	4.0	BBB+	10.4
Consumer Staples	3.9	BBB	6.2
Energy	3.6	BBB-	2.9
Communication Services	2.9	High-Yield	0.5

DPAM L Patrimonial Dynamic Fund - B

Institutional Factsheet | 28 February 2019

Reference Currency EUR | Since Inception (31.08.2014)

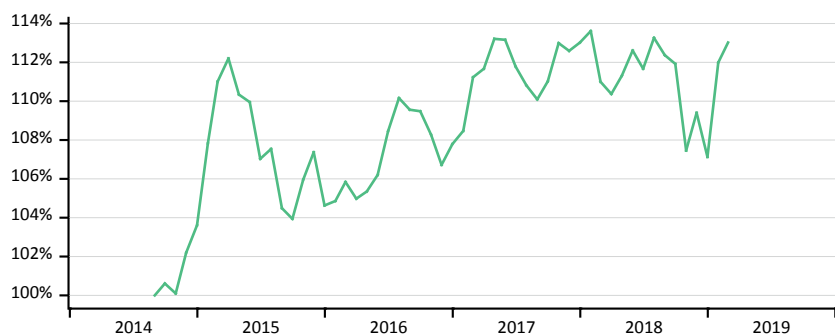
DISTRIBUTION OF MONTHLY RETURNS



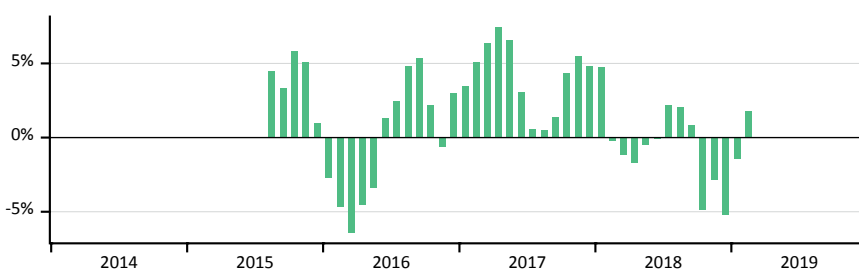
STATISTICS

Volatility	%	5.76
Sharpe Ratio		0.53
Downside Deviation	%	3.59
Sortino Ratio		0.84
Positive Months	%	55.56
Maximum Drawdown	%	-7.36
Risk-Free Rate -0.28%		

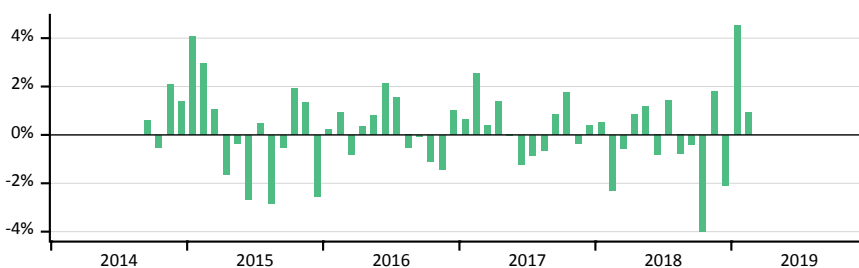
CUMULATIVE PERFORMANCE



12-MONTH ROLLING RETURNS



MONTHLY RETURNS



MONTHLY RETURNS IN %

	2015	2016	2017	2018	2019
	Fund	Fund	Fund	Fund	Fund
January	4.06	0.22	0.63	0.52	4.54
February	2.96	0.93	2.54	-2.30	0.92
March	1.07	-0.81	0.40	-0.57	
April	-1.66	0.35	1.38	0.85	
May	-0.35	0.81	-0.04	1.17	
June	-2.66	2.13	-1.22	-0.83	
July	0.48	1.57	-0.87	1.42	
August	-2.84	-0.54	-0.65	-0.79	
September	-0.53	-0.07	0.84	-0.40	
October	1.94	-1.11	1.77	-3.98	
November	1.33	-1.43	-0.35	1.81	
December	-2.55	1.00	0.38	-2.07	
Year	0.98	3.02	4.85	-5.21	5.50

IMPORTANT INFORMATION - FOR AUTHORIZED USE ONLY

The information contained in this document and attachments (hereafter the 'documents') is provided for pure information purposes only.

Present documents do not constitute investment advice nor do they form part of an offer or solicitation for the purchase of shares, bonds or mutual funds, or an invitation to buy or sell the products or instruments referred to herein.

Applications to invest in any fund referred to in these documents can only validly be made on the basis of the Key Investor Information Document (KIID), the prospectus and the latest available annual and semi-annual reports. These documents can be obtained free of charge at Degroof Petercam Asset Management sa or on the website funds.degroofpetercam.com.

All opinions and financial estimates herein reflect a situation at the date of issuance of the documents and are subject to change without notice. Indeed, past performances are not necessarily a guide to future performances and may not be repeated.

Degroof Petercam Asset Management sa ("DPAM") whose registered seat is established Rue Guimard, 18, 1040 Brussels and who is the author of the present document, has made its best efforts in the preparation of this document and is acting in the best interests of its clients, without carrying any obligation to achieve any result or performance whatsoever. The information is based on sources which DPAM believes are reliable. However, DPAM does not guarantee that the information is accurate and complete.

Present documents may not be duplicated, in whole or in part, or distributed to other persons without prior written consent of DPAM. These documents may not be distributed to private investors and their use is exclusively restricted to institutional investors.