

SICAV SINGAPORE - RETAIL**Contact Details**

Threadneedle Investments Singapore (Pte.) Limited
3 Killiney Road, #07-07 Winsland House 1
Singapore 239519
+65 6309 1088 (Please note that calls may be recorded)

Fund Manager: Philip Dicken
Since: Apr-19
Management Co: Threadneedle Man. Lux. S.A.
Fund Inception: 23/01/07
Date:
Index: EMIX Smaller European Companies
Fund Currency: EUR
Fund Domicile: Luxembourg
XD Date: -
Pay Date: -
Portfolio Size: €543.7m
No. of Securities: 88

All information expressed in EUR

Pan European Small Cap Opportunities Class AE (EUR Accumulation Shares)

ISIN: LU0282719219
Share Class Price: 40.2656

Share Class Launch Date:
23 Jan 2007

The Share Class currency, unless indicated as a Hedged Share Class, is a translated price using exchange rates at the official valuation point of the fund. This is intended as a way to access a Share Class in your chosen currency and does not reduce your overall exposure to foreign currency. The fund currency indicates the highest currency exposure of the fund unless the currency breakdown is detailed in the Weightings % table on page 2.

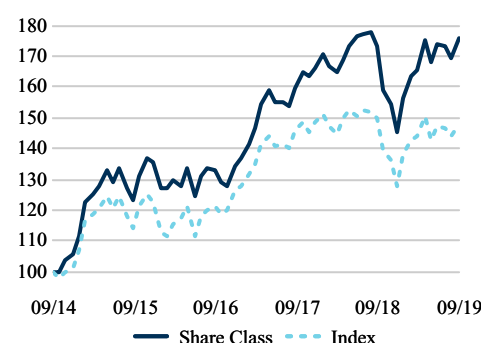
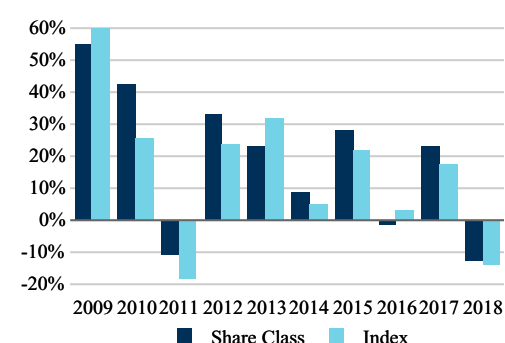
Investment Objective & Policy

The aim of the Fund is to grow the amount you invested.

The Fund invests at least two-thirds of its assets in shares of smaller companies in Europe, including the UK, or companies that have significant operations there. The smaller companies that the Fund invests in will typically be companies smaller in size than the top 300 companies in the FTSE World Europe Index.

The Fund may also invest in asset classes and instruments different from those stated above.

The Fund permanently invests a minimum of 75% of its assets in European Economic Area equities, and is therefore PEA (Plan d'Epargne en Actions) eligible in France.

5 Years NAV (EUR)**Calendar Years (EUR)****Cumulative Performance (EUR)**

Share	1M	3M	6M	YTD	1YR	2YR	3YR	5YR	10YR	SI
Share Class (Net)	3.7	1.0	6.1	20.8	1.5	10.1	31.8	75.5	304.3	--
Share Class (Net FEL applied)	-1.5	-4.1	0.8	14.8	-3.6	4.6	25.3	66.7	284.1	--
Index (Gross)	3.0	0.7	3.1	16.1	-1.3	1.4	22.4	48.2	165.1	--

Since Inception Returns from: 24/01/07

Annualised Performance (EUR)

Share	1M	3M	6M	YTD	1YR	2YR	3YR	5YR	10YR	SI
Share Class (Net)	3.7	1.0	6.1	20.8	1.5	4.9	9.7	11.9	15.0	--
Share Class (Net FEL applied)	-1.5	-4.1	0.8	14.8	-3.6	2.3	7.8	10.8	14.4	--
Index (Gross)	3.0	0.7	3.1	16.1	-1.3	0.7	7.0	8.2	10.2	--

Past performance is not a guide to future performance. The value of investments and any income is not guaranteed and can go down as well as up and may be affected by exchange rate fluctuations. This means that an investor may not get back the amount invested. Index returns assume reinvestment of dividends and capital gains and unlike fund returns do not reflect fees or expenses. The index is unmanaged and cannot be invested directly. All returns assume income is reinvested for a local taxpayer, bid to bid performance (which means performance does not include the effect of any initial charges).

Top 10 Holdings (%)

Security Name	Weight
Eurofins Scientific Societe Europeenne	2.3
Genus plc	2.2
VZ Holding AG	2.1
Orpea SA	2.1
Johnson Service Group PLC	2.1
Elis SA	2.0
DiaSorin S.p.A.	2.0
SIG Combibloc Group Ltd	1.9
FinecoBank SpA	1.9
VAT Group AG	1.9

Weightings (%)

Sector	Fund Index		Diff
Industrials	29.9	21.9	8.1
Health Care	15.4	7.5	7.9
Information Technology	12.5	7.7	4.9
Materials	10.6	6.1	4.5
Consumer Discretionary	10.1	12.3	-2.2
Communication Services	8.1	6.0	2.1
Financials	7.0	15.2	-8.2
Real Estate	2.7	11.5	-8.8
Consumer Staples	1.9	5.5	-3.6
Energy	0.4	2.9	-2.5
Other	--	3.6	-3.6
Cash Equivalents	0.0	--	0.0
Cash	1.4	--	1.4

Country	Fund	Index	Diff
United Kingdom	25.8	27.2	-1.4
France	12.7	8.8	3.9
Germany	12.1	10.6	1.6
Switzerland	9.9	8.5	1.4
Italy	9.7	7.5	2.2
Sweden	7.3	9.6	-2.3
Finland	4.9	3.2	1.7
Netherlands	4.0	3.5	0.4
Ireland	3.8	0.9	2.9
Belgium	3.1	4.0	-0.9
Other	5.2	16.2	-11.0
Cash Equivalents	0.0	--	0.0
Cash	1.4	--	1.4

Risks

- The value of investments can fall as well as rise and investors might not get back the sum originally invested.
- Where investments are in assets that are denominated in multiple currencies, or currencies other than your own, changes in exchange rates may affect the value of the investments.
- The Fund holds assets which could prove difficult to sell. The Fund may have to lower the selling price, sell other investments or forego more appealing investment opportunities.
- The Fund may invest in derivatives with the aim of reducing risk or minimising the cost of transactions. Such derivative transactions may benefit or negatively affect the performance of the Fund. The Manager does not intend that such use of derivatives will affect the overall risk profile of the Fund.

Opportunities

- Provides exposure to a diverse range of countries and sectors.
- Access to a consistent investment process with a diversified approach that aims to reduce risk and limit volatility.
- Smaller companies can be a source of long-term growth: seeking the industry leaders of tomorrow.
- Managed by a multi-disciplinary team that have broad experience of all market conditions.

Share Classes Available

Share	Class	Curr	AMC	Max FEL	Launch	ISIN	BBID	Hedged
AE	Acc	EUR	1.50%	5.00%	23/01/07	LU0282719219	AMESMAE LX	No
ASH	Acc	SGD	1.50%	5.00%	23/03/12	LU0640478920	TESCASH LX	Yes
AE	Acc	USD	1.50%	5.00%	01/10/07	LU0757432546	TESCAEE LX	No
AUH	Acc	USD	1.50%	5.00%	03/07/18	LU1815337495	THECAUH LX	Yes

Important Information

Threadneedle (Lux) is an investment company with variable capital (Société d'investissement à capital variable, or "SICAV") formed under the laws of the Grand Duchy of Luxembourg. The SICAV issues, redeems and exchanges shares of different classes, which are listed on the Luxembourg Stock Exchange. The management company of the SICAV is Threadneedle Management Luxembourg S.A, who is advised by Threadneedle Asset Management Ltd. and/or selected sub-advisors. The SICAV is registered in Austria, Belgium, France, Finland, Germany, Hong Kong, Ireland, Italy, Luxembourg, The Netherlands, Portugal, Spain, Sweden, Switzerland, Taiwan and the UK; however, this is subject to applicable jurisdictions and some sub-funds and/or share classes may not be available in all jurisdictions. Shares in the Funds may not be offered to the public in any other country and this document must not be issued, circulated or distributed other than in circumstances which do not constitute an offer to the public and are in accordance with applicable local legislation. This material is for information only and does not constitute an offer or solicitation of an order to buy or sell any securities or other financial instruments, or to provide investment advice or services.

This publication does not have regard to the specific investment objective, financial situation and particular needs of any specific person. You may wish to seek advice from a financial adviser before making any investment. In the event that you choose not to do so, you should consider whether the investment selected is suitable for you. Investments in the Threadneedle Funds are not deposits in, obligations of, or guaranteed or insured by Threadneedle Investments Singapore (Pte.) Limited ("TIS") or any of its affiliates, and are subject to investment risks, including possible loss of the principal amount invested. Unit values and income therefrom, if any, may fall or rise. Past performance is not indicative of future performance. You should read the Prospectus (including the 'Risk Factors' section for all risks applicable to investing in any Fund and specifically this Fund) and Product Highlights Sheet ("PHS") before deciding whether to subscribe for units in the Fund or making any investment decision. The Prospectus and PHS of the Fund are available from our appointed distributors or our website at www.threadneedle.sg. This publication is prepared by TIS (Registration number: 201101559W). Registered address: 3 Killiney Road, #07-07 Winsland House 1, Singapore 239519. TIS is regulated in Singapore by the Monetary Authority of Singapore under the Securities and Futures Act (Chapter 289). This advertisement has not been reviewed by the Monetary Authority of Singapore. Columbia Threadneedle Investments is the global brand name of the Columbia and Threadneedle group of companies.

Index data source: EMIX indices – EMIX Smaller European Companies Index