

Man GLG European Equity Alternative



Monthly Report as at 31 January 2018

MTD: 2.20 % **YTD:** 2.20 % **Annualised return since inception:** 3.23 % **Annualised volatility since inception:** 4.74 %

Fund Risks

Prior to investing in the Fund investors should carefully consider the risks associated with investing, investors should consider the following risks and where appropriate seek professional advice before investing: Market Risk, Counterparty Risk, Currency Risk, Liquidity, Financial Derivatives, Leverage, Emerging Markets, Single Region/Country, Model and Data Risk. More details can be found in the Risk Glossary.

Fund Aims

The aim of the Man GLG European Equity Alternative (the 'Fund') is to provide investors with substantial returns with a focus on long and short investments in issuers that are either domiciled or that derive a substantial part of their revenues from within Europe, or whose securities are traded in a European market. Investment in Europe will, at all times, constitute the largest regional allocation of the Fund.

The value of your investment and the income from it may rise as well as fall and you may not get back the amount originally invested. Prior to making investments investors should read and consider the Fund's offering documents.

Fund Details

Launch date	27 July 2011
Fund AUM ¹	(USD) 927,173,843
Portfolio manager	Neil Mason and Fabian Blohm
Currencies	EUR / USD / GBP / CHF / NOK / SEK / SGD
Dividend policy	Non-distributing
Fund domicile	Ireland
Minimum investment	EUR / USD / GBP / CHF 1,000 or NOK / SEK 5,000 or SGD 1,000 (Retail Classes) EUR / USD / GBP 100,000 or NOK / SEK 500,000 (Institutional Classes)
Performance fee ²	up to 20 %
Management fee	up to 2.75 % per annum

Net Performance Statistics

	Fund
Last month	2.20 %
Last 3 months	2.97 %
Last 6 months	5.49 %
Year to date	2.20 %
Last 1 year	6.19 %
Since inception	23.03 %
Annualised return since inception	3.23 %
Annualised volatility since inception	4.74 %
Sharpe ratio ³	0.65
Worst drawdown	-10.39 %
Worst drawdown length ⁴	8 months

Net track record*



— Man GLG European Equity Alternative

Historical performance^{5 6}

Year	Jan	Feb	Mar	Apr	May	Jun	Jul	Aug	Sep	Oct	Nov	Dec	YTD ⁷
2018	2.20 %												2.20 %
2017	1.88 %	-1.43 %	-0.61 %	-0.11 %	0.03 %	1.13 %	1.69 %	1.45 %	0.05 %	0.93 %	0.77 %	-0.02 %	5.86 %
2016	-0.80 %	0.11 %	-1.92 %	-0.41 %	0.76 %	-3.17 %	-0.05 %	1.93 %	1.45 %	0.32 %	-0.77 %	0.46 %	-2.18 %
2015	2.55 %	0.35 %	1.85 %	0.43 %	-0.58 %	0.05 %	-0.42 %	0.63 %	-1.31 %	1.14 %	1.04 %	1.03 %	6.92 %
2014	1.43 %	1.61 %	-3.55 %	-4.35 %	-0.57 %	-0.28 %	-0.97 %	-0.30 %	1.22 %	-1.98 %	0.70 %	0.78 %	-6.27 %
2013	1.17 %	0.56 %	0.73 %	0.14 %	0.68 %	1.59 %	1.25 %	0.83 %	0.25 %	-1.60 %	0.16 %	1.29 %	7.24 %
2012	4.22 %	2.01 %	1.40 %	0.56 %	-1.06 %	-1.78 %	-0.42 %	-0.24 %	1.45 %	0.96 %	-0.31 %	-0.63 %	6.19 %
2011							-0.70 %	0.95 %	-0.24 %	2.31 %	0.32 %	-0.75 %	1.87 %

*Unless otherwise indicated, the performance data is based on the reporting share class of the Fund (shown in blue in the NAV table) and may be closed to new subscriptions. The performance data does not take account of the commissions and/or costs incurred on the issue and/or redemption of units. Past performance is not a reliable indicator of future results. Returns may increase or decrease as a result of currency fluctuations. Please refer to important information.

Man GLG European Equity Alternative



Commentary

Equity markets started the year on a strong note. January saw the decline of the US dollar accelerate, fuelled by comments for US Secretary Treasury Steven Mnuchin that a weaker dollar would benefit the US in terms of exports. In the UK, sterling reached its highest levels against the dollar since Brexit vote on the back of economic data showing GDP grew by 0.5% in the fourth quarter of 2017 and further progress in the Brexit negotiations. Elsewhere, the Euro hit a three-year high versus the US dollar and its continued strength has become a concern for the ECB as its rise complicates their plans to wind down stimulus measures. In the US, economic data releases were mixed in January. While fourth quarter GDP figures disappointed slightly, US core inflation data core inflation figures rose by 0.3% in December, beating consensus expectations. In terms of politics, last week saw Chancellor Angela Merkel enter into formal coalition talks with the Social Democratic Party, easing the political uncertainty that has plagued Germany since the election last September.

Turning to performance, the Fund had a strong month, ending the month up 2.2% net of fees. Returns were driven almost entirely by specific risk. The majority of the books had positive performance this month. Of the developed books within the strategies, only 3 had a marginally negative performance in January. Contribution to Fund returns from the underlying books ranged from -0.04% to 0.90% with the Centre Book, UK Core, and Utilities & Infrastructure books performing best this month. UK Core found success with its short book along with a long position in EasyJet following a strong earnings report, while Utilities & Infrastructure saw long positions in Fortum OYJ and Electricite de France perform well over the month. On the flip side, Oil Services ended the month negative after struggling with its short book.

In terms of risk, Barra volatility fell slightly from 3.3% at the end of December to 3.2% by the end of January. Gross exposures were also lower, finishing the month at approximately 402%.

Specific risk remains the dominant component of risk composition and spent most of the month around the 75-80% level. Market, style and industry were tightly managed over the month, constituting less than 20% of the Fund's risk profile.

Last month also saw three books-US Financial, Industrials US, and Special Situations-successfully emerge from incubator.

Looking ahead to February, the focus will likely be on Germany and the formation of a new coalition government as well as the upcoming elections in Italy.

Man GLG European Equity Alternative

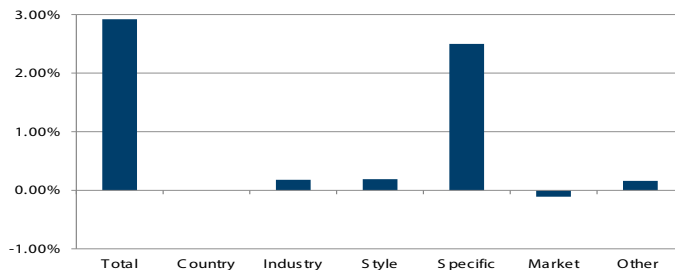


Equity Attribution Analysis ^{8 9}

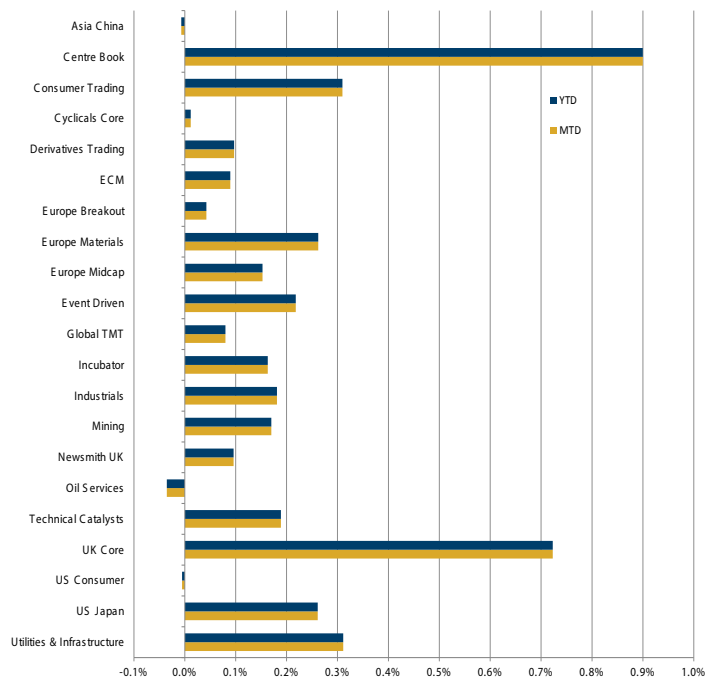
Fund Attribution

	MTD	YTD
Total	2.92%	2.92%
Country	0.00%	0.00%
Industry	0.18%	0.18%
Style	0.19%	0.19%
Specific	2.50%	2.50%
Market	-0.11%	-0.11%
Other	0.16%	0.16%

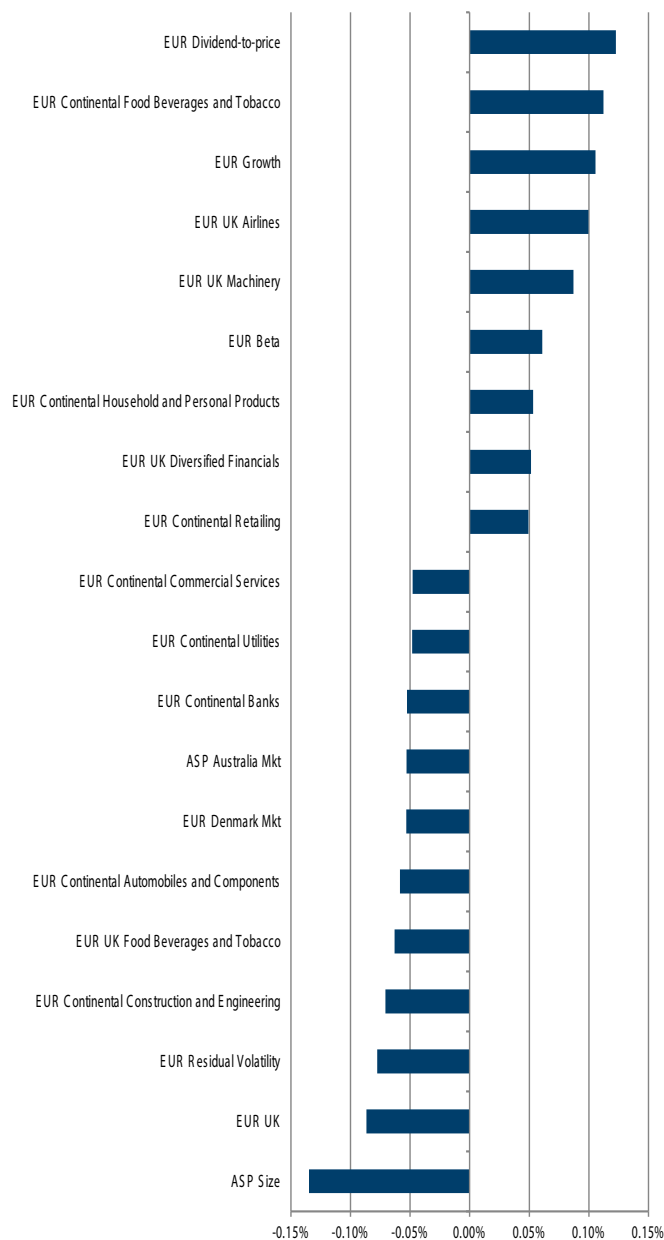
Fund Attribution (MTD)



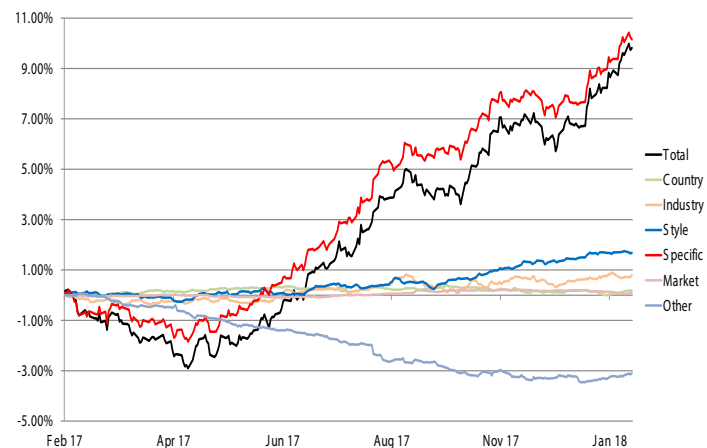
Contribution by Strategy¹⁰



Top 20 Factor Contributors



Rolling 1 Year Fund Attribution



Man GLG European Equity Alternative

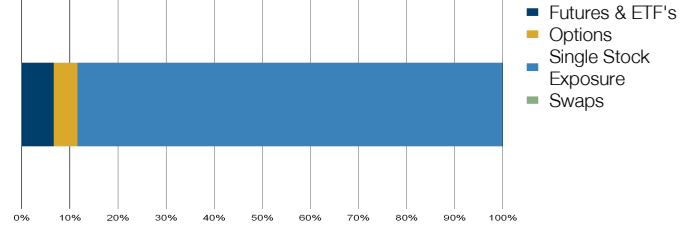


Equity Exposure Analysis ^{8 11}

Headline equity exposure

	Close	Change	Average	Positions	Change
Gross	402.01 %	-18.00 %	416.72 %	1,972	272
Net	-3.54 %	-1.78 %	-2.59 %	1,972	272
Long	199.24 %	-9.89 %	207.07 %	1,033	94
Short	202.77 %	-8.11 %	209.66 %	939	178

Gross equity exposure by security type ¹²



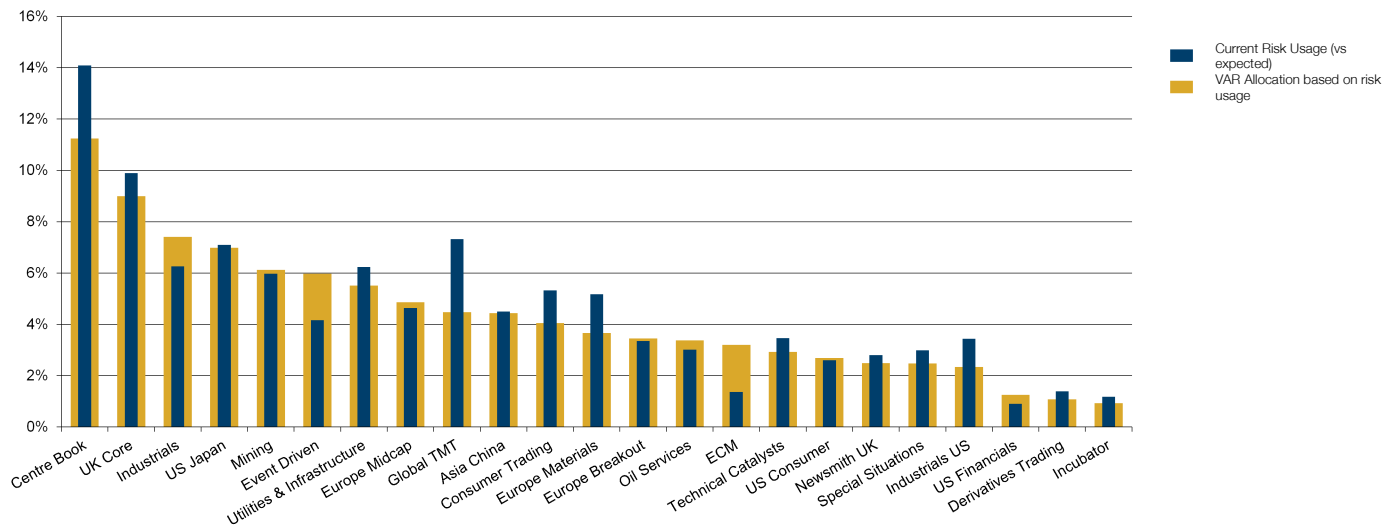
VaR

	VaR
1 day VaR (98%)	0.48 %
- Commodity	0.00 %
- Equity	0.48 %
- FX	0.02 %
- Inflation	0.00 %
- Interest rate	0.00 %
- Spread	0.00 %
- Volatility	0.04 %
Expected shortfall	0.57 %

Breakdown by asset class ¹³

	Market value	Gross exposure
Commodity	0.00 %	0.00 %
Convertible	0.00 %	0.00 %
Equities	68.72 %	402.01 %
Fixed income	0.00 %	0.28 %
Currency	31.27 %	4.37 %
Money markets	0.00 %	0.00 %
Other	0.00 %	0.02 %
Total	99.98 %	406.69 %

Fund VaR allocation and Risk usage



Man GLG European Equity Alternative



Equity exposure by region and sector

	Europe		ROW		US		Total Gross	Change	Total Net	Change
	Long	Short	Long	Short	Long	Short				
Consumer Discretionary	28.69 %	32.87 %	4.42 %	5.38 %	7.46 %	7.88 %	86.70 %	4.72 %	-5.56 %	-4.67 %
Consumer Staples	12.24 %	13.28 %	2.15 %	3.00 %	1.44 %	1.39 %	33.49 %	2.54 %	-1.84 %	1.01 %
Energy	1.76 %	4.17 %	0.58 %	1.23 %	3.98 %	4.11 %	15.83 %	-1.14 %	-3.19 %	-1.53 %
Financials	10.20 %	6.92 %	1.07 %	3.23 %	4.20 %	5.53 %	31.15 %	0.11 %	-0.20 %	0.88 %
Health Care	2.27 %	5.54 %	1.33 %	0.40 %	1.34 %	1.40 %	12.28 %	0.15 %	-2.39 %	-0.28 %
Industrials	37.20 %	29.94 %	7.89 %	5.64 %	7.67 %	9.21 %	97.55 %	-13.33 %	7.96 %	-0.16 %
Information Technology	5.13 %	6.74 %	5.15 %	3.57 %	4.94 %	4.50 %	30.02 %	-3.05 %	0.41 %	4.40 %
Materials	14.91 %	13.35 %	6.93 %	4.59 %	3.54 %	1.96 %	45.28 %	-9.88 %	5.48 %	-1.26 %
Real Estate	2.56 %	3.23 %	1.45 %	1.70 %	0.17 %	0.27 %	9.40 %	0.46 %	-1.02 %	-0.85 %
Telecommunication Services	1.48 %	2.15 %	0.19 %	0.98 %	0.00 %	0.46 %	5.26 %	0.30 %	-1.92 %	-0.43 %
Unclassified	0.30 %	2.14 %	0.00 %	1.27 %	0.46 %	1.05 %	5.22 %	0.99 %	-3.70 %	-1.50 %
Utilities	15.20 %	13.09 %	0.40 %	0.53 %	0.56 %	0.09 %	29.85 %	0.13 %	2.45 %	2.61 %
Total Gross	265.34 %		63.07 %		73.60 %		402.01 %			
Change	-7.92 %		-5.98 %		-4.10 %			-18.00 %		
Total Net	-1.52 %		0.04 %		-2.07 %				-3.54 %	
Change	-0.69 %		0.28 %		-1.37 %					-1.78 %

Equity exposure by market cap (Index positions decomposed)¹⁴

	Long	Short	Net	Gross
Mega	96.64 %	105.97 %	-9.33 %	202.61 %
Large	60.78 %	61.59 %	-0.82 %	122.37 %
Mid	19.93 %	24.82 %	-4.89 %	44.75 %
Small	19.77 %	10.05 %	9.71 %	29.82 %
Micro	2.12 %	0.33 %	1.79 %	2.45 %

Top 10 long/short positions

Long	Fund Exposure	Short	Fund Exposure
INFORMA PLC	3.94 %	Consumer Discretionary	-2.52 %
TESCO PLC	3.65 %	Consumer Discretionary	-2.44 %
BHP BILLITON PLC	3.42 %	Utilities	-2.18 %
GVC HOLDINGS PLC	2.78 %	Consumer Discretionary	-2.09 %
ABERTIS	2.64 %	Consumer Discretionary	-2.06 %
INFRASTRUCTURAS		Consumer Discretionary	-1.91 %
VOLVO AB	2.43 %	Consumer Staples	-1.90 %
LONDON STOCK EXCHANGE GROUP	2.25 %	Consumer Discretionary	-1.90 %
PRYSMIAN SPA	2.21 %	Industrials	-1.79 %
EASYJET PLC	2.15 %	Utilities	-1.72 %
TELEPERFORMANCE	2.14 %		

Position concentration as % of total portfolio

	Current month
Top 10	27.67 %
Top 20	49.08 %
Top 30	67.32 %

Option Greeks (Equity Only)

	Fund
Gamma +1%	3.34 %
Gamma -1%	2.41 %
Theta (1 month)	-0.26 %
Vega	0.06 %

Historical replays¹⁵

Sept 11 (7th - 21st Sept 2001)	Banking Crisis (6th - 20th Nov 2008)	Greek Crisis (23rd April - 7th May 2010)	Lehman Crisis (26th Sept - 10 Oct 2008)	Equity Mkt Rebound (9th -23rd March 2009)
0.65 %	-5.28 %	1.68 %	1.73 %	12.45 %

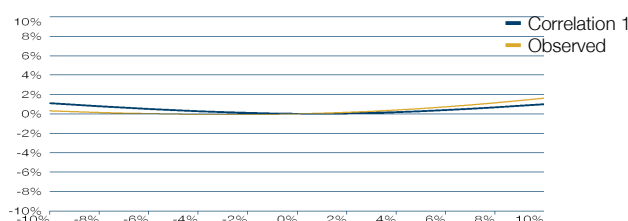
Man GLG European Equity Alternative



Scenarios analysis (uncorrelated)

Equity +10%	Equity -10%	Rate +50bps	Rate -50bps	Credit spread +10%	Credit spread -10%	Volatility +25%	Volatility -25%	All currencies +5%	All currencies -5%
1.04 %	1.07 %	0.01 %	-0.01 %	0.00 %	0.00 %	0.24 %	-0.28 %	0.13 %	-0.13 %

Equity market slide



NAVs¹⁶

NAVs Unrestricted Classes¹⁶

Class	NAV	ISIN	Bloomberg	2015 Return	2016 Return	2017 Return
IN EUR	123.03	IE00B5429P46	GLGGEEC ID	6.92 %	-2.18 %	5.86 %
DN H NOK	128.00	IE00B5BG5293	GLGEEHN ID	7.53 %	-1.69 %	6.22 %
IN H USD	126.42	IE00B54VK141	GLGGEUA ID	7.08 %	-1.39 %	7.45 %
IN H GBP	125.17	IE00B501WY55	GLGGEGE ID	7.30 %	-1.89 %	6.33 %
DN H USD	123.19	IE00B55G5T10	GLGGEUB ID	6.77 %	-1.60 %	7.15 %
DN H SEK	120.24	IE00B664J889	GLGEEHS ID	5.79 %	-3.18 %	4.78 %
DN H GBP	118.35	IE00B50LJD33	GLGGEUF ID	6.61 %	-2.29 %	6.15 %
DN EUR	117.71	IE00B5591813	GLGGEED ID	6.25 %	-2.77 %	5.31 %
IN H SEK	115.52	IE00B5MLB684	GLGEEIS ID	6.73 %	-2.43 %	5.60 %
DN H CHF	112.69	IE00B3N8Z959	GLGEEHC ID	5.37 %	-3.41 %	5.42 %
INZ H USD	109.33	IE00BDRVT430	GLGINZU ID	N/A	N/A	N/A
INZ EUR	107.51	IE00BDRVT323	GLGINZE ID	N/A	N/A	N/A
INZ H GBP G-Dist A	103.32	IE00BZ607V89		N/A	N/A	N/A
INZ H USD G-Dist A	102.59	IE00BZ607W96		N/A	N/A	N/A
INZ H CHF G-Dist A	102.25	IE00BZ607S50		N/A	N/A	N/A
INZ EUR G-Dist A	102.25	IE00BZ607T67		N/A	N/A	N/A

¹ Represents the combined AUM of all share-classes in the Portfolio ² See prospectus for details. ³ Sharpe ratio is a measure of risk-adjusted performance that indicates the level of excess return per unit of risk. It is calculated using the risk-free rate in the appropriate currency over the period analysed. Where an investment has underperformed the risk-free rate, the Sharpe ratio will be negative. As the Sharpe ratio is an absolute measure of risk-adjusted return, negative Sharpe ratios can be misleading and are therefore shown as n/a. ⁴ The length is the peak-to-trough decline.

⁵ Performance Disclosures: The inception date of the Fund is 27 July 2011. The net returns are calculated net of management fees of 2% per annum and, as applicable, performance fees of 20% of the amount by which the Fund exceeds its relevant hurdle. Please note that some share classes may charge higher management fees. ⁶ Past performance is not a reliable indicator of future results. Returns may increase or decrease as a result of currency fluctuations. ⁷ When 12 months of performance data is unavailable for a calendar year, partial year to date is shown. ⁸ The organisations and/or financial instruments mentioned are for reference purposes only. The content of this material should not be construed as a recommendation for their purchase or sale. ⁹ This attribution refers to the core holdings of the Fund and therefore will not exactly correspond to individual share class returns as performance fees and other class specific fees are not included. ¹⁰ These are trading books contained within the fund ¹¹ Higher level equity exposures are calculated using M&A adjustments. ¹² As a percent of the gross exposure. ¹³ Market value may be different to gross exposure due to the use of derivatives in the fund. Only fully funded positions in the fund would have the same market value as exposure. Fixed Income exposure for an equity fund may include exposures to short maturity government bills for cash management purposes ¹⁴ The micro dollar market capitalisation is from 0 to \$500,000,000.00, the small dollar market capitalisation is from \$500,000,000.00 to \$2,500,000,000.00, the mid dollar market capitalisation is from \$2,500,000,000.00 to \$5,000,000,000.00, the large dollar market capitalisation is from \$5,000,000,000.00 to \$12,500,000,000.00 and the mega dollar market capitalisation is \$12,500,000,000 and above. ¹⁵ Historical simulated replay taking current positioning and applying it to the specified 10 business day period. The periods selected are exceptional and results do not reflect typical performance. ¹⁶ The share class in blue in the table above is the reporting share class for the Fund and may be closed to new subscriptions. Performance of other share classes shown may vary. Performance data is shown with income reinvested and does not take into account sales and redemption charges where such costs are applicable.

Risk Glossary

Market Risk: The Fund is subject to normal market fluctuations and the risks associated with investing in international securities markets and therefore the value of your investment and the income from it may rise as well as fall and you may not get back the amount originally invested.

Counterparty Risk: The Fund will be exposed to credit risk on counterparties with which it trades in relation to on-exchange traded instruments such as futures and options and where applicable, 'over-the-counter' ("OTC", "non-exchange") transactions. OTC instruments may also be less liquid and are not afforded the same protections that may apply to participants trading instruments on an organised exchange.

Currency Risk: The value of investments designated in another currency may rise and fall due to exchange rate fluctuations. Adverse movements in currency exchange rates may result in a decrease in return and a loss of capital. It may not be possible or practicable to successfully hedge against the currency risk exposure in all circumstances.

Liquidity: The Fund may make investments or hold trading positions in markets that are volatile and which may become illiquid. Timely and cost efficient sale of trading positions can be impaired by decreased trading volume and/or increased price volatility.

Man GLG European Equity Alternative



Financial Derivatives: The Fund will invest in financial derivative instruments ("FDI") (instruments whose prices are dependent on one or more underlying asset) to achieve its investment objective. The use of FDI involves additional risks such as high sensitivity to price movements of the asset on which it is based. The extensive use of FDI may significantly multiply the gains or losses.

Leverage: The Fund's use of FDI may result in increased leverage which may lead to significant losses.

Emerging Markets: The Fund may invest a significant proportion of its assets in securities with exposure to emerging markets which involve additional risks relating to matters such as the illiquidity of securities and the potentially volatile nature of markets not typically associated with investing in other more established economies or markets.

Single Region/Country: The Fund is a specialist country-specific or geographic regional Fund, the investment carries greater risk than a more internationally diversified portfolio.

Model and Data Risk: The Fund's Investment Manager relies on internally derived qualitative and quantitative trading models and algorithms. These quantitative trading models and algorithms may rely on data that is internally derived or provided by a third party. If a model or algorithm or the data consumed by these models or algorithms prove to be incorrect or incomplete, the Fund may be exposed to potential losses. The calculations and output of a models or algorithm can be impacted by unforeseen market disruptions and/or government or regulatory intervention, leading to potential losses.

Important Information

The Fund is a sub-fund of Man Funds VI PLC, domiciled in Ireland and registered with the Central Bank of Ireland. Full details of the Fund objectives, investment policy and risks are located in the Prospectus which is available with the Key Investor Information Document in English and in an official language of the jurisdictions in which the Fund is registered for public sale, together with the Report and Accounts of the UCITS. The Fund's documentation are available free of charge from the local information/paying agent, from authorised distributors and from www.man.com.

In order to fulfil the fund's objectives the Prospectus allows the manager the ability to invest principally in units of other collective investment schemes, bank deposits, derivatives contracts designed with the aim of gaining short term exposure to an underlying stock or index at a lower cost than owning the asset, or assets aiming to replicate a stock or debt securities index.

The value of an investment and any income derived from it can go down as well as up and investors may not get back their original amount invested. Alternative investments can involve significant additional risks.

This material is for information purposes only and does not constitute an offer or invitation to invest in any product for which any Man Group plc affiliate provides investment advisory or any other services. Prior to making any investment decisions, investors should read and consider the fund's offering documents.

Opinions expressed are those of the author as of the date of their publication, and are subject to change.

Some statements contained in these materials concerning goals, strategies, outlook or other non-historical matters may be "forward-looking statements" and are based on current indicators and expectations at the date of their publication. We undertake no obligation to update or revise them. Forward-looking statements are subject to risks and uncertainties that may cause actual results to differ materially from those implied in the statements.

Distribution of this material and the offer of shares may be restricted and the minimum subscription amount may be higher in certain jurisdictions. The product(s) mentioned within this material (i) may not be registered for distribution in your jurisdiction, and (ii) may only be available to professional or otherwise qualified investors or entities. It is important that distributors and/or potential investors are able to ensure compliance with local regulations prior to making a subscription. Please refer to the offering documentation for additional information.

Unless stated otherwise the source of all information is Man Group plc and its affiliates as of the date on the first page of this material.

This material was prepared by GLG Partners LP ("Investment Manager") (company number LP006776) which is registered in England and Wales at Riverbank House, 2 Swan Lane, London, EC4R 3AD. Authorised and regulated in the UK by the Financial Conduct Authority. This material is distributed pursuant to global distribution and advisory agreements by subsidiaries of Man Group plc ("Marketing Entities"). Specifically, in the following jurisdictions:

Australia: To the extent this material is distributed in Australia it is communicated by Man Investments Australia Limited ABN 47 002 747 480 AFSL 240581, which is regulated by the Australian Securities & Investments Commission (ASIC). This information has been prepared without taking into account anyone's objectives, financial situation or needs.

European Economic Area: Unless indicated otherwise this website is communicated in the European Economic Area by Man Solutions Limited which is an investment company as defined in section 833 of the Companies Act 2006 and is authorised and regulated by the UK Financial Conduct Authority (the "FCA"). Man Solutions Limited is registered in England and Wales under number 3385362 and has its registered office at Riverbank House, 2 Swan Lane, London, EC4R 3AD. As an entity which is regulated by the FCA, Man Solutions Limited is subject to regulatory requirements, which can be found at <http://register.fca.org.uk/>.

Germany: To the extent this material is used in Germany, the communicating entity is Man (Europe) AG, which is authorised and regulated by the Liechtenstein Financial Market Authority (FMA). Man (Europe) AG is registered in the Principality of Liechtenstein no. FL-0002.420.371-2. Man (Europe) AG is an associated participant in the investor compensation scheme, which is operated by the Deposit Guarantee and Investor Compensation Foundation PCC (FL-0002.039.614-1) and corresponds with EU law. Further information is available on the Foundation's website under www.eas-liechtenstein.li. A number of the Fund's share classes are registered for distribution to professional and non-professional investors in Germany. The Fund's documentation can be obtained in German free of charge from the paying agent in Germany, BHF-BANK Aktiengesellschaft, Bockenheimer Landstraße 10, 60323 Frankfurt am Main. This material is of a promotional nature.

Hong Kong: To the extent this material is distributed in Hong Kong, this material is communicated by Man Investments (Hong Kong) Limited and has not been reviewed by the Securities and Futures Commission in Hong Kong. This material can only be communicated to intermediaries, and professional clients who are within one of the professional investors exemptions contained in the Securities and Futures Ordinance and must not be relied upon by any other person(s).

Man GLG European Equity Alternative



Liechtenstein: To the extent the material is used in Liechtenstein, the communicating entity is Man (Europe) AG, which is regulated by the Financial Market Authority Liechtenstein (FMA). Man (Europe) AG is registered in the Principality of Liechtenstein no. FL-0002.420.371-2. Man (Europe) AG is an associated participant in the investor compensation scheme, which is operated by the Deposit Guarantee and Investor Compensation Foundation PCC (FL-0002.039.614-1) and corresponds with EU law. Further information is available on the Foundation's website under www.eas-liechtenstein.li. A number of the Fund's share classes are registered for distribution to professional and non-professional investors in Liechtenstein. The Fund's documentation can be obtained in German free of charge from the paying agent in Liechtenstein, LGT Bank AG, Herrengasse 12, FL-9460 Vaduz.

Spain: Full prospectuses and simplified prospectuses, statutes and annual and semi-annual accounts of the investment products are available free of charge at the offices of the Spanish distributors authorised in Spain. A list of the Spanish distributors authorised and their contact details can be obtained on the Comisión Nacional del Mercado de Valores ("CNMV") website: www.cnmv.es. Man Funds VI plc: The sub-funds mentioned herein are authorised to be marketed to the public in Spain and belong to the Man Funds VI plc that is registered in the Comisión Nacional del Mercado de Valores (hereinafter the "CNMV") with the number 882.

Switzerland: To the extent the material is distributed in Switzerland the communicating entity is Man Investments AG, which is regulated by the Swiss Financial Market Supervisory Authority. A number of share classes in the Ireland domiciled Fund have been registered for distribution with the Swiss Financial Markets Supervisory Authority. The Swiss representative is Man Investments AG, Huobstrasse 3, 8808 Pfäffikon SZ. The Swiss paying agent is Credit Suisse AG, Paradeplatz 8, 8001 Zürich. The Prospectus, the Key Investor Information Document (the 'KIID'), the Memorandum and Articles of Association as well as the annual and semi-annual reports can be obtained free of charge from the Swiss representative. In respect of the units distributed in and from Switzerland, the place of jurisdiction is Pfäffikon SZ, Switzerland. Please take note that you are only permitted to distribute this material onwards if you are licensed as distributor (or exempt according to art. 8 Collective Investment Schemes Ordinance) and have entered into a written distribution agreement with Man Investments AG.

Recipients of this material are deemed by the respective Marketing Entity to be investment professionals and/or qualified investors that have employed appropriately qualified individuals to manage their financial assets and/or are a financial services entity appointed by an investor to provide fiduciary advisory and/or portfolio management services in respect of their financial assets. Marketing Entities will provide prospective and existing investors with product and strategy information prepared by the Investment Manager and assist with queries regarding investment strategies and products managed by the Investment Manager but will not provide investment advice or personal investment recommendations, assess the suitability or appropriateness of any investment products and does not consider the particular circumstances specific to any individual recipient to whom this material has been sent nor engage in any activity which may be deemed to be "receipt and transmission of client orders" or "arranging deals" in investments.

This material is not suitable for US persons.

This material is proprietary information and may not be reproduced or otherwise disseminated in whole or in part without prior written consent. Any data services and information available from public sources used in the creation of this material are believed to be reliable. However accuracy is not warranted or guaranteed. © Man 2018.