

Risk profile (SRR1) ¹⁾

1	2	3	4	5	6	7
---	---	---	---	---	---	---

CS (Lux) Asia Corporate Bond Fund

Class BH EUR

Investment policy

The fund invests primarily in USD denominated Asian debt instruments, bonds, notes, and similar fixed-interest or floating-rate securities of issuers domiciled in Asia or conducting their main business activities in Asia. The Fund aims to generate alpha from active management of duration, sector exposure, and issuer selection through fundamental bottom-up analyses based on risk/reward parameters.

Fund facts

Fund manager	Adrian Chee, Lei Zhu
Fund manager since	25.09.2012
Location	Singapore
Fund domicile	Luxembourg
Fund currency	USD
Close of financial year	31. Mar
Total net assets (in millions)	1'852.65
Inception date	25.09.2012
Management fee in % p.a.	1.10
TER (as of 31.03.2018) in %	1.28
Benchmark (BM)	JPM Asia Credit Index ex-Sovereign 1-10Y (EUR-Hgd)
Swinging single pricing (SSP) ⁴⁾	Yes
Unit Class	Category BH (capital growth)
Unit class currency	EUR
ISIN number	LU0828908748
Bloomberg ticker	CSBACRE LX
Net Asset Value	115.48
Redemptions	Daily

⁴⁾ For more details, please refer to the relevant chapter "Net Asset Value" of the Fund's prospectus.

Duration and Yield

	Fund
Yield to maturity in % (gross) ³⁾	7.45
Average remaining term to maturity in years	3.10
Modified duration in years	3.28

Fund Statistics

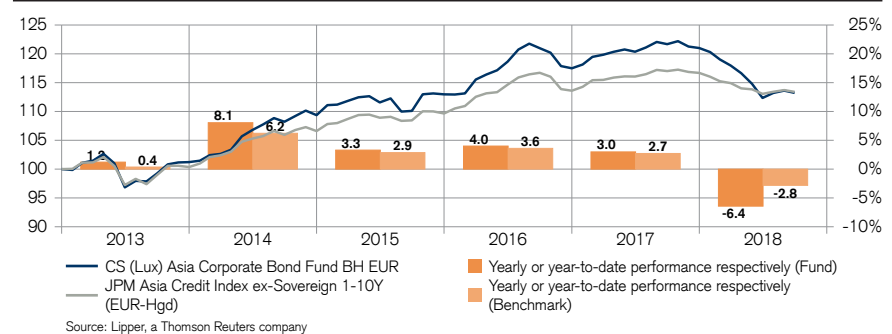
	3 years	5 years
Annualised volatility in %	3.60	3.44
Information ratio	-0.30	-0.05
Tracking Error (Ex post)	1.83	1.68
Maximum draw down in % ⁵⁾	-8.06	-8.06

⁵⁾ Maximum drawdown is the most negative cumulative return over a given time period.

Number of holdings

Fund	186
-------------	-----

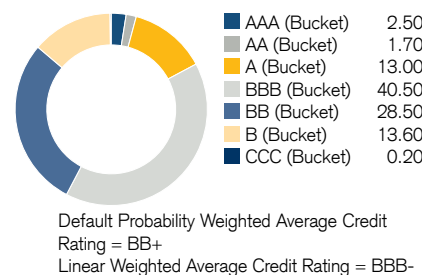
Net performance in EUR (rebased to 100) and yearly performance ²⁾



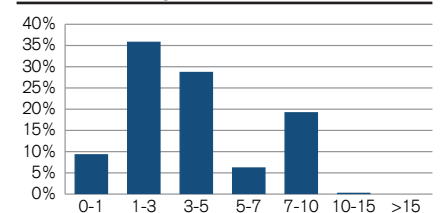
Net performance in EUR ²⁾

	1 month	3 months	YTD	1 year	3 years	5 years
Fund	-0.35	0.79	-6.43	-6.95	2.84	14.10
Benchmark	-0.27	0.31	-2.82	-3.08	4.56	14.59

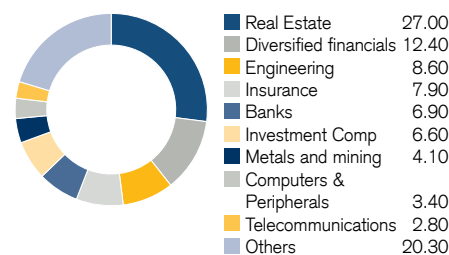
Credit Ratings in %



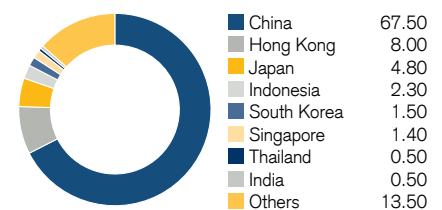
Maturities in years



Sectors in %



Countries in %



Currencies in %

	Fund
USD	98.90
CNY	1.00
EUR	0.10

Top 10 holdings in %

Position	Maturity	as % of assets
Hong Kong Intl	04.12.22	1.74
Qinghai General Aviation	11.12.18	1.28
China Cinda Fin	23.04.25	1.28
CNAC HK Finbridge	14.03.28	1.23
King Talent Man	04.06.67	1.21
Tsinghua Unic Ltd	31.01.23	1.17
Huasing International Holdings	20.03.23	1.12
Dai-ichi Life Insurance	24.01.67	1.11
China Reinsurance	09.03.22	1.10
HK Xiangyu Investment	30.01.23	1.09
Total		12.33

¹⁾ The calculation of the risk indicator is based on the CESR/10-673 Directive. The risk indicator is based on historic and partly simulated data; it cannot be used to predict future developments. The classification of the Fund may change in future and does not represent a guarantee. A classification into category 1 is not a risk-free investment either.

²⁾ Historical performance indications and financial market scenarios are not reliable indicators of future performance. The performance data do not take into account the commissions and costs incurred on the issue and redemption of fund units.

³⁾ The portfolio return takes into account currency hedging, whereas the benchmark return shown here does not take currency hedging into account.

Contact

CREDIT SUISSE AG
Sucursal en España
Calle Ayala 42
28001 Madrid/Spain
Tel +34 91 791 60 00 Fax +34 91 791 60 10

The information provided herein constitutes marketing material. It is not investment advice or otherwise based on a consideration of the personal circumstances of the addressee nor is it the result of objective or independent research. The information provided herein is not legally binding and it does not constitute an offer or invitation to enter into any type of financial transaction.

The information provided herein was produced by Credit Suisse Group AG and/or its affiliates (hereafter "CS") with the greatest of care and to the best of its knowledge and belief.

The information and views expressed herein are those of CS at the time of writing and are subject to change at any time without notice. They are derived from sources believed to be reliable.

CS provides no guarantee with regard to the content and completeness of the information and does not accept any liability for losses that might arise from making use of the information. If nothing is indicated to the contrary, all figures are unaudited. The information provided herein is for the exclusive use of the recipient.

Neither this information nor any copy thereof may be sent, taken into or distributed in the United States or to any U. S. person (within the meaning of Regulation S under the US Securities Act of 1933, as amended).

It may not be reproduced, neither in part nor in full, without the written permission of CS.

Investment principal on bonds can be eroded depending on sale price, market price or changes in redemption amounts. Care is required when investing in such instruments. Emerging market investments usually result in higher risks such as political, economic, credit, exchange rate, market liquidity, legal, settlement, market, shareholder and creditor risks. Emerging markets are located in countries that possess one or more of the following characteristics: a certain degree of political instability, relatively unpredictable financial markets and economic growth patterns, a financial market that is still at the development stage or a weak economy.

CS (Lux) Asia Corporate Bond Fund BH EUR: This fund is domiciled in Luxembourg. The representative in Switzerland is Credit Suisse Funds AG, Zurich. The paying agent in Switzerland is Credit Suisse (Schweiz) AG, Zurich. The prospectus, the simplified prospectus and/or the Key Investor Information Document (KIID) and the annual and half-yearly reports may be obtained free of charge from the representative or from any branch of Credit Suisse AG in Switzerland.

Important information for investors in Spain

The fund CS (Lux) Asia Corporate Bond Fund BH EUR is registered at the Comisión Nacional del Mercado de Valores for distribution in Spain by registered distributors. The prospectus, the key investor information document or the document replacing it in the home country of the fund, the management regulations or bylaws and the annual and/or semi-annual reports are available free of charge from registered distributors, such as Credit Suisse International, Sucursal en España and/or Credit Suisse AG, Sucursal en España, with registered office at calle Ayala 42, 28001 Madrid, España. Investors should carefully read and analyze the mentioned documents, if necessary with the help of a professional advisor. In Spain, this material is distributed by CS AG, Sucursal en España.

Copyright © 2018 Credit Suisse Group AG and/or its affiliates. All rights reserved.